

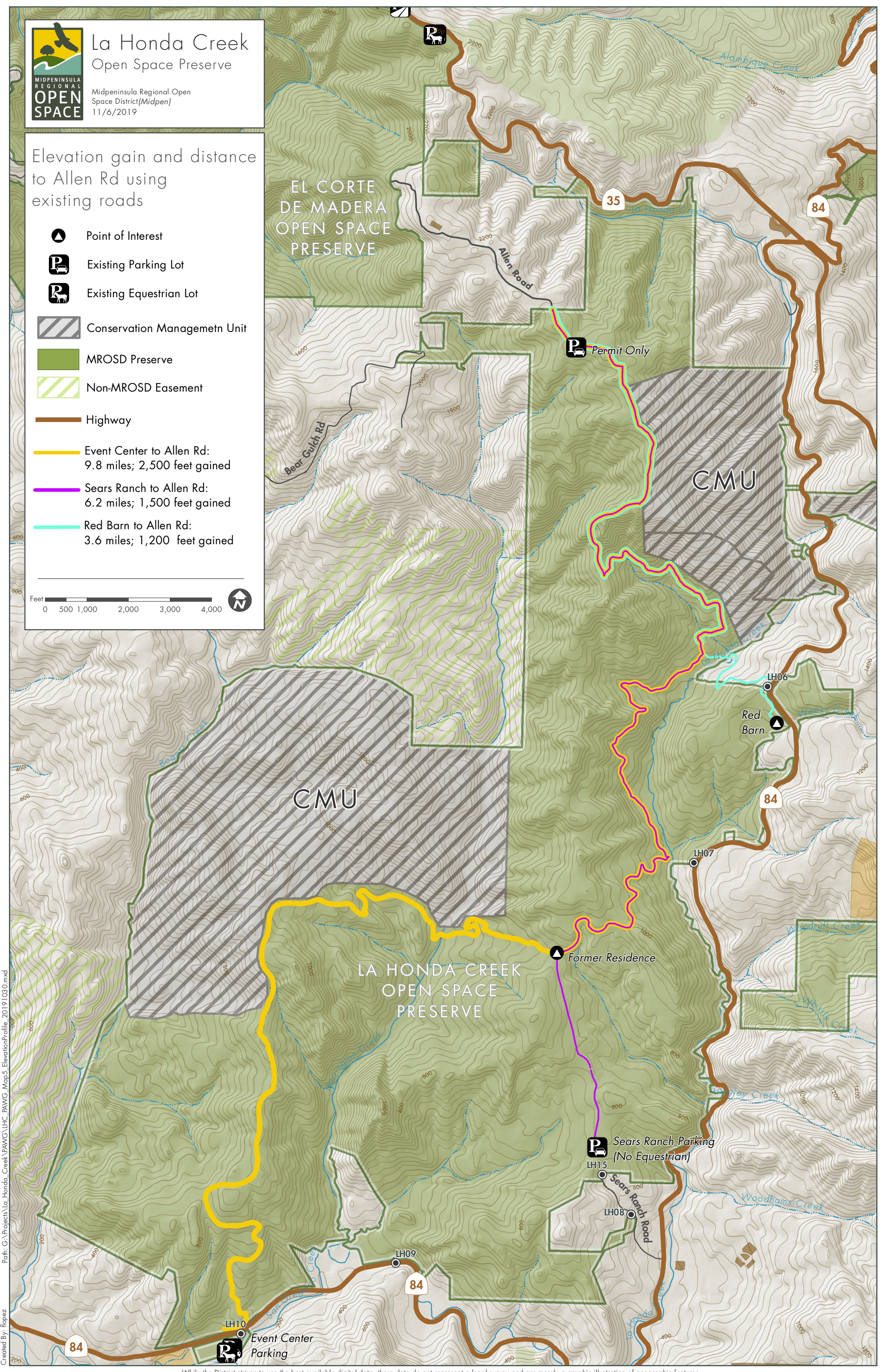
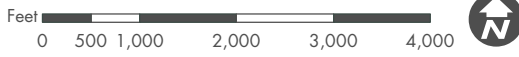


La Honda Creek Open Space Preserve

Midpeninsula Regional Open Space District (Midpen)
11/6/2019

Elevation gain and distance to Allen Rd using existing roads

- Point of Interest
- Existing Parking Lot
- Existing Equestrian Lot
- Conservation Management Unit
- MROSD Preserve
- Non-MROSD Easement
- Highway
- Event Center to Allen Rd:
9.8 miles; 2,500 feet gained
- Sears Ranch to Allen Rd:
6.2 miles; 1,500 feet gained
- Red Barn to Allen Rd:
3.6 miles; 1,200 feet gained



Path: G:\Projects\La Honda Creek\PAWG\LHC_PAWG_Map5_ElevationProfile_20191030.mxd
Created By: flopez

While the District strives to use the best available digital data, these data do not represent a legal survey and are merely a graphic illustration of geographic features.