

Welcome to the Midpeninsula Regional Open Space District



Russian Ridge Open Space Preserve

Deane Little

The Midpeninsula Regional Open Space District (District) is a regional greenbelt system in the San Francisco Bay Area. It is comprised of over 60,000 acres of land in 26 open space preserves protected for public enjoyment, making a preserve system of diverse and unparalleled beauty in one of the largest metropolitan areas in the country. Preserves include redwood, oak, and fir forests, chaparral-covered hillsides, riparian corridors, grasslands, and wetlands along the San Francisco Bay.

Preserves, ranging from 55 to over 18,000 acres, are open to the public free of charge, 365 days a year. Visitors will find over 220 miles of trails, ranging from easy to challenging terrain.

History

The District was founded in 1972 to preserve the regional greenbelt in northwestern Santa Clara County. The voters expanded the District in 1976 to include southern San Mateo County and again in 1992, to add a small portion of Santa Cruz County. In 2004, through the Coastsides Protection Program, the District's boundary was extended to the Pacific Ocean in San Mateo County.



Jack Gescheidt

Mission

To acquire and preserve a regional greenbelt of open space land in perpetuity, protect and restore the natural environment, and provide opportunities for ecologically sensitive public enjoyment and education.

Board of Directors

The District is governed by a seven-member elected board of directors. Each board member is elected to serve a four-year term and represents a geographic ward of approximately equal populations.

Staffing

The staff currently consists of over 100 employees in six departments: Administration, Natural Resources, Operations, Planning, Public Affairs, and Real Property.

Funding

General funding is provided by a small share of the annual total property tax revenues collected within District boundaries, except on the San Mateo County Coastsides. This amounts to about \$17 per \$100,000 of assessed property value, which currently provides approximately \$32.4 million (2013-14 fiscal year). Other revenue sources may include federal and state grants, interest and rental income, donations, land gifts, and note issues.



Karl Gohl

Measure AA

In June 2014, voters passed Measure AA, which authorized the District to issue up to \$300 million in bonds over the next 20-30 years for specific capital projects. The increase in tax rate will not exceed \$3.18 per \$100,000 of assessed property value within the District's entire jurisdiction. The District anticipates issuing the first series of Measure AA bonds in 2015, which will be reflected in the 2015-16 budget.

Volunteer Opportunities

Over 500 volunteers assist the District each year ranging from one-day projects to ongoing natural history education, trail patrol, maintenance, and restoration programs. Programs are described online at www.openspace.org.

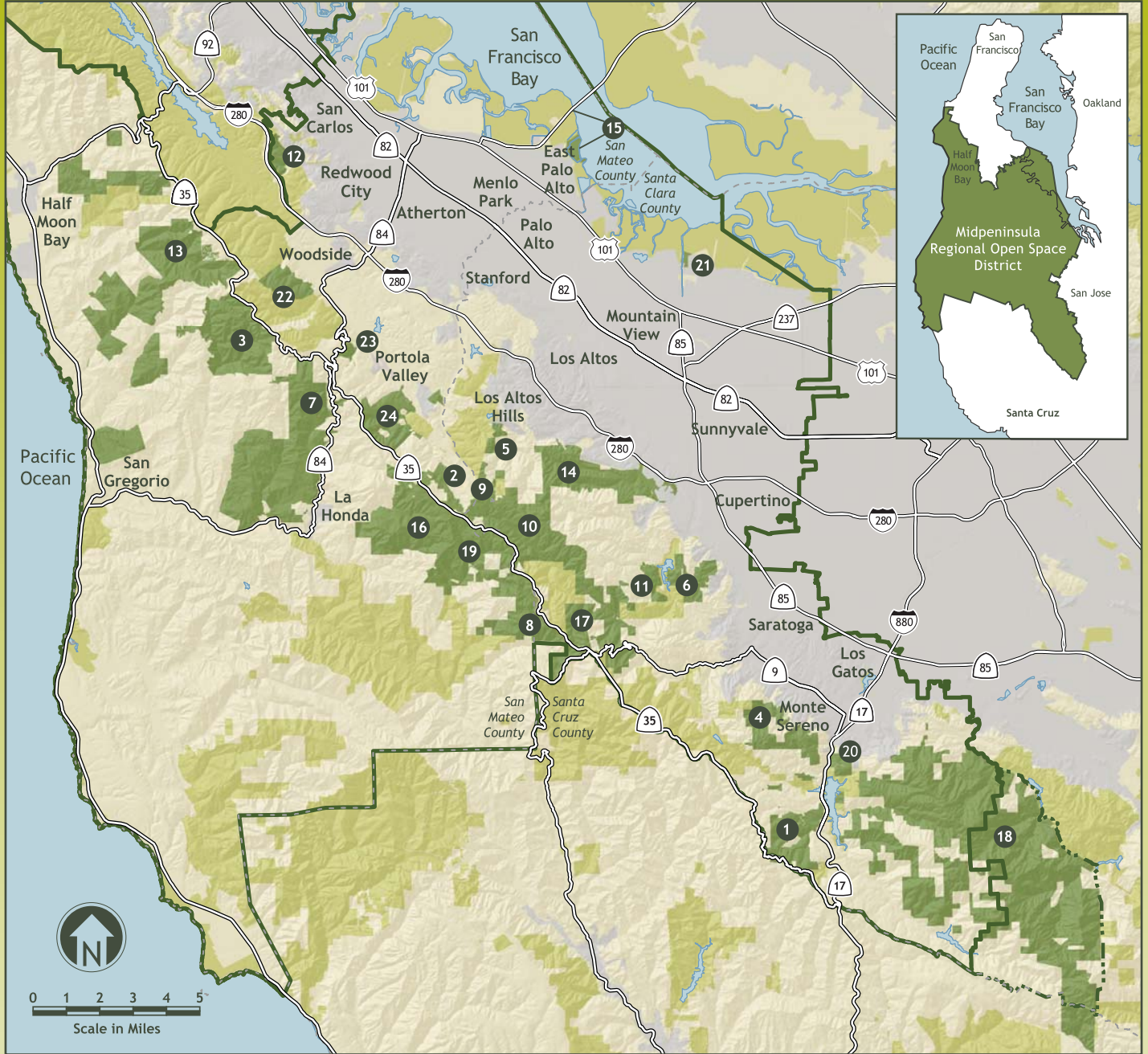


Midpeninsula Regional Open Space District

330 Distel Circle
Los Altos, California 94022-1404
Phone: 650-691-1200 • Fax: 650-691-0485
E-mail: info@openspace.org
Web site: www.openspace.org



Welcome to the Midpeninsula Regional Open Space District



#	Preserves	Acres							
1	Bear Creek Redwoods	1,437	●	●	●	●	□	□	□
2	Coal Creek	508	●	●	●	●	□	□	□
3	El Corte de Madera Creek	2,906	●	●	●	●	□	□	□
4	El Sereno	1,419	●	●	●	●	□	□	□
5	Foothills	212	●	●	●	●	□	□	□
6	Fremont Older	739	●	●	●	●	□	□	●
7	La Honda Creek	6,144	●	●	●	●	□	□	□
8	Long Ridge	2,035	●	●	●	●	□	□	□
9	Los Trancos	274	●	●	●	●	□	□	□
10	Monte Bello	3,537	●	●	●	●	□	□	●
11	Picchetti Ranch	308	●	●	●	●	□	□	●
12	Pulgas Ridge	366	●	●	●	●	□	□	●
13	Purisima Creek Redwoods	4,752	●	●	●	●	□	□	●
14	Rancho San Antonio	3,988	●	●	●	●	□	□	●

Ample Parking
 Limited Parking
 Very Limited Parking

1 In designated area by permit only
 2 Kennedy-Limekiln area only
 3 Mount Umunhum area only
 4 On designated trails only
 5 On weekends, arrive early to find parking
 6 Overlook Trail parking area by permit only

#	Preserves	Acres							
15	Ravenswood	376	●	●	●	●	□	□	□
16	Russian Ridge	3,491	●	●	●	●	□	□	●
17	Saratoga Gap	1,608	●	●	●	●	□	□	□
18	Sierra Azul (Cathedral Oaks, Kennedy-Limekiln Rancho de Guadalupe, & Mount Umunhum Areas)	18,939	●	●	●	●	□	□	●
19	Skyline Ridge	2,143	●	●	●	●	□	□	●
20	St. Joseph's Hill	270	●	●	●	●	□	□	●
21	Stevens Creek Shoreline Nature Study Area	55	●	●	●	●	□	□	□
22	Teague Hill	626	●	●	●	●	□	□	□
23	Thornewood	167	●	●	●	●	□	□	□
24	Windy Hill	1,414	●	●	●	●	□	□	●

Midpeninsula Regional Open Space District preserves
 Major city, county, state & federal parks, open space preserves, and publicly-owned watershed lands