



DATE: December 3, 2024

MEMO TO: Board of Directors

THROUGH: Ana Ruiz, General Manager *[Signature]*

FROM: Rafaela Ocegüera, Budget & Finance Manager

SUBJECT: Progress on Measure AA Commitments

Background

In June 2014, voters passed Measure AA (MAA), authorizing Midpeninsula Regional Open Space District (District) to issue up to \$300 million in general obligation bonds over 30 years to accelerate land acquisition, environmental restoration and public access within District boundaries. MAA projects are grouped into 25 portfolios organized by geographic area. Proceeds are generated from a series of bond sales over a 20-to-30-year period.

The District began using MAA funds in 2014. The fiscal year ending June 30, 2024 (FY24) marks the completion of the tenth year of funding.

In June 2023, the District's Board of Directors (Board) confirmed the completion and approved the closing of Portfolio #18 (*South Bay Foothills: Saratoga-to-the-Sea Trail and Wildlife Corridor*) and Portfolio #23 (*Sierra Azul: Mt. Umunhum Public Access and Interpretation Projects*). The remaining funds of \$6,357,920 were moved to further support Portfolio #03 (*Purisima Creek Redwoods: Purisima-to-Sea Trail, Watershed Protection and Conservation Grazing*) (R-23-67).

Measure AA Completion Percentage

Table 1 estimates the overall MAA completion percentage as of June 30, 2024. To determine the completion percentage for each portfolio, staff use two estimation methods in Columns 1 and 2:

- Column 1 percentages are based on the projects or tasks completed in FY24, using the Portfolio Progress Indicators in the MAA Annual Accountability Report. These indicators estimate the level of completion by percentage as either 0%, 25% 50% 75% or 100%.
- Column 2 percentages are based on expenditures from inception through FY24. The approved portfolio reallocation from Portfolio #18 and Portfolio #23 to Portfolio #3 is reflected.

Staff then calculate the weighted percentage of the first two columns using two different weighting methods in Columns 3 and 4:

- Column 3 shows an equal weighting by portfolio (e.g., each portfolio is 1/25th, or 4%, of the total \$300 million allocation).
- Column 4 shows a weighting by portfolio funding allocation as compared to the total \$300 Million MAA bond funding. The approved portfolio reallocation from Portfolio #18 and Portfolio #23 to Portfolio #3 is reflected.

Table 1. MAA Completion Estimate

MAA Overall Completion Estimate		Estimated Total Percent Complete of Portfolio Commitments			
		Based on the Average of the Portfolio Projects Estimated		Inception-to-Date Through FY24 Total Net* Spend as % of Allocation	
				Portfolio Weighting	
				Equal Weight	By Allocation \$
Portfolio 1	Miramontes Ridge	30%	17%	4.0%	9.3%
Portfolio 2	Regional - Bayfront	100%	68%	4.0%	1.7%
Portfolio 3	Purisima Creek Redwoods	44%	59%	4.0%	4.7%
Portfolio 4	El Corte de Madera Creek	58%	12%	4.0%	2.8%
Portfolio 5	La Honda Creek	56%	38%	4.0%	3.9%
Portfolio 6	Windy Hill	8%	3%	4.0%	4.2%
Portfolio 7	La Honda Creek	88%	85%	4.0%	4.9%
Portfolio 8	La Honda Creek and Russian Ridge	13%	14%	4.0%	5.1%
Portfolio 9	Russian Ridge	100%	11%	4.0%	1.9%
Portfolio 10	Coal Creek	100%	39%	4.0%	2.7%
Portfolio 11	Rancho San Antonio	50%	3%	4.0%	3.6%
Portfolio 12	Peninsula/South Bay Cities	8%	0%	4.0%	0.3%
Portfolio 13	Cloverdale Ranch	50%	37%	4.0%	5.2%
Portfolio 14	Regional – Trail Connections	13%	0%	4.0%	1.3%
Portfolio 15	Regional – Redwoods and Fisheries	25%	13%	4.0%	16.9%
Portfolio 16	Long Ridge	0%	0%	4.0%	1.7%
Portfolio 17	Regional – Upper Stevens Creek Trail	50%	21%	4.0%	2.6%
Portfolio 18	South Bay Foothills	100%	100%	4.0%	0.4%
Portfolio 19	El Sereno	88%	13%	4.0%	0.8%
Portfolio 20	South Bay Foothills	50%	8%	4.0%	4.7%
Portfolio 21	Bear Creek Redwoods	90%	96%	4.0%	5.8%
Portfolio 22	Sierra Azul	40%	22%	4.0%	2.2%
Portfolio 23	Sierra Azul	100%	100%	4.0%	7.3%
Portfolio 24	Sierra Azul	13%	16%	4.0%	3.4%
Portfolio 25	Sierra Azul	17%	30%	4.0%	2.7%
All Portfolios				100.0%	100.0%
Total MAA Estimated Percent Complete					
Average of Portfolio Projects Estimated Completion				51.6%	48.0%
Total Net* Spend and Committed as % of Allocation				32.2%	33.8%
Total Gross Spend and Committed as % of Allocation				43.0%	42.4%
* Net expenditure after reducing for grants					

A matrix of weighted averages is shown in the bottom green section of Table 1 above. The portfolio completion range is estimated between 48.0% and 51.6%, and the net bond spend is between 32.2% and 33.8%. If grants and interest income are excluded, the total net bond spent would be between 42.4% and 43.0%. This aligns well with the 10-year span reflected in this analysis through end of FY24, or 33% through the 30-year MAA timeframe.

MAA Accomplishments and Beneficial Outcomes Through FY24

The following list summarizes the major MAA accomplishments completed to date, from 2014 through the end of FY24:

- Preserved 10,487 acres of open space land in perpetuity (Attachment 1).
- Opened 31.9 miles of new trail within eight preserves (Attachment 2); note: 4.3 miles of additional trails were recently opened in October of FY25.
- Opened five preserves or preserve areas to the public, including the Mindego Gateway area of Russian Ridge Preserve, Mount Umunhum area of Sierra Azul Preserve, Lower La Honda Creek Preserve, and the Phase 1 Trails and Alma Cultural Landscape areas of Bear Creek Redwoods Preserve; note: the northeastern area of Bear Creek Redwoods was recently opened in October of FY25.
- Opened three new parking areas, with a total of 126 new parking spaces.
- Expanded the conservation grazing program by entering into eight new agricultural leases at four preserves.
- Invested \$42.3 million in Coastside projects.

The following list focuses on the most recent MAA accomplishments completed during FY24:

- Preserved and protected 800.05 acres of open space land in perpetuity:
 - Finalized the purchase of the 644-acre Johnston Uplands Ranch property from our non-profit partner Peninsula Open Space Trust (MAA01).
 - Purchased the 96.77-acre Eberhard property to protect redwood forested lands and wildlife habitat on the headwaters of La Honda Creek within the San Gregorio watershed (MAA05 and MAA15).
 - Purchased the 59.28-acre Fifths property to protect redwood forested lands and wildlife habitat on the headwaters of La Honda Creek within the San Gregorio watershed (MAA15).
- Completed structural repairs of the historic La Honda White Barn for cultural interpretation and public safety with interior enhancements to improve bat roosting habitat (MAA05).
- Completed spillway repairs at Lower Turtle Pond, located within La Honda Creek, to create flood resiliency, improve special status species recovery and maintain conservation grazing water availability (MAA07).
- Removed hazardous materials from the former Alma College landfill site, which included 274 tons of hazardous soils and ash, three tons of recyclable metals, one cubic yard of non-friable asbestos containing materials, 32 tires, 1.5 tons of general waste and debris and an undocumented 500-gallon fuel storage tank along the recently opened Alma Loop Trail (MAA21).
- Completed trail improvements in Coal Creek to repurpose an old, unpaved road alignment as the regional Alpine Trail for safe trail user connections between Portola Valley and the greater Skyline Area Trail System (MAA10).
- Substantially completed the Phase 2 trails within Bear Creek Redwoods to open the northeastern area of the preserve to general public access; site improvements also focused on enhancing the land's ecological health, with extensive invasive plant management and drainage improvements to address erosion issues and creek sedimentation (MAA21).
- Completed work to help move conceptual design plans of the Highway 17 Wildlife and Trail Crossings project toward detailed construction plans and administered the public review period for the environmental analysis (CEQA) document for the project.

A full list of MAA accomplishments since 2014, including all of the work completed during FY24, are included in the Measure AA Bond Annual Accountability Report. Interested parties may access the report via the District’s website (openspace.org/district-reports).

Progress on the Board-Approved FY24-28 MAA Five-Year Project List

In December 2021, the Board approved the MAA Five-Year Project List and Optional List for FY24 through FY28 (Attachment 3). This project list is used to guide the development of the annual Budget and Action Plans over the near term. An update on the progress of the projects on this list as of June 30, 2024 are included below.

The FY24-FY28 project list includes 36 projects that the District plans to start by FY28. As of June 30, 2024, four (4) project scope items were completed, 29 were in progress, one (1) was deferred, and two (2) had not yet started as listed below:

Table 2. Status of the FY24 to FY28 MAA Five-Year Project List

MAA Portfolio No.	Project Name	Status
MAA01- Miramontes Ridge: <i>Gateway to the Coast Public Access, Stream Restoration and Agriculture Enhancement</i>	Madonna Bridge Replacement	In Progress
	Water Infrastructure Development	In Progress
	Public Access and Land Preservation	Complete
MAA02- Regional: <i>Bayfront Habitat Protection and Public Access Partnerships</i>	Stevens Creek Tidal Wetland Restoration	In Progress
MAA03- Purisima Creek Redwoods: <i>Purisima-to-Sea Trail, Watershed Protection, and Conservation Grazing</i>	Purisima-to-the-Sea Trail and Parking Area	In Progress
	Pond Restoration	In Progress
	Site Clean Up and Soil Remediation	In Progress
MAA04- El Corte de Madera Creek: <i>Bike Trail and Water Quality Projects</i>	Pursue Land Conservation Opportunities	In Progress
MAA05- La Honda Creek: <i>Upper Area Recreation, Habitat Restoration and Conservation Grazing Projects</i>	Phase 2 - Bridge Replacements (2)	In Progress
	La Honda Creek Parking and Trailhead Access	In Progress
	Grazing and Water Systems Infrastructure	Complete
	Pursue Land Conservation Opportunities	In Progress
	La Honda Fisheries Restoration	In Progress
	Phase II Trail: Red Barn to Main Ranch Road (connects to La Honda Creek loop)	In Progress
	Phase II Trails: Connection between the Red Barn/Central area and Upper La Honda Creek	In Progress
MAA06- Windy Hill: <i>Trail Improvements, Preservation and Hawthorns Area Historic Partnership</i>	Hawthorns Area Plan	In Progress
	Hawthorns Area Plan Implementation	In Progress
MAA07- La Honda Creek: <i>Driscoll Ranch Public Access,</i>	Forest Restoration and Road Rehabilitation	In Progress

<i>Endangered Wildlife Protection and Conservation Grazing</i>		
MAA10- Coal Creek: <i>Reopen Alpine Road for Trail Use</i>	Alpine Road Trail Improvements	Complete
	Meadow Trail Re-route	Not Started
MAA11- Rancho San Antonio : <i>Interpretive Improvements, Refurbishing, and Transit Solutions</i>	Non-Motorized Mobility, Transit Connections and Parking Alternatives	In Progress
MAA16- Long Ridge: <i>Trail, Conservation and Habitat Restoration Projects (Saratoga)</i>	Long Ridge Parking	Not Started
	Long Ridge Trail Connections to Eagle Rock and Devil's Canyon	Deferred*
MAA19- El Sereno: <i>Dog Trails and Connections</i>	Regional Trail Connection to Sanborn & Lexington County Parks	In Progress
	Spooky Knoll Trail	In Progress
MAA20- South Bay Foothills: <i>Wildlife Passage and Ridge Trail Improvements</i>	HWY 17 Bay Area Ridge Trail Crossing	In Progress
	HWY 17 Wildlife Crossing	In Progress
MAA21- Bear Creek Redwoods: <i>Public Recreation and Interpretive Projects</i>	Alma College Site Rehabilitation	Complete
	Phase II Trails: Multi-Use Links	In Progress
	Phase II Trails: Public Loop Trail to the Stables	In Progress
	Phase II Trails: Briggs Creek Trail	In Progress
	Phase II Trails: Alma College Loop Trail	In Progress
	Bear Creek Stables Repairs	In Progress
MAA22- Sierra Azul: <i>Cathedral Oaks Public Access and Conservation Projects</i>	Wildlife Crossing Improvements on Alma Bridge Rd	In Progress
	Pursue Land Conservation Opportunities	In Progress
MAA24- Sierra Azul: <i>Rancho de Guadalupe Family Recreation</i>	Pursue Land Conservation Opportunities	In Progress

* Project deferred to line up with the future Long Ridge Parking Feasibility Study to couple with environmental review, public outreach, etc. Timing of the feasibility study is pending staff capacity.

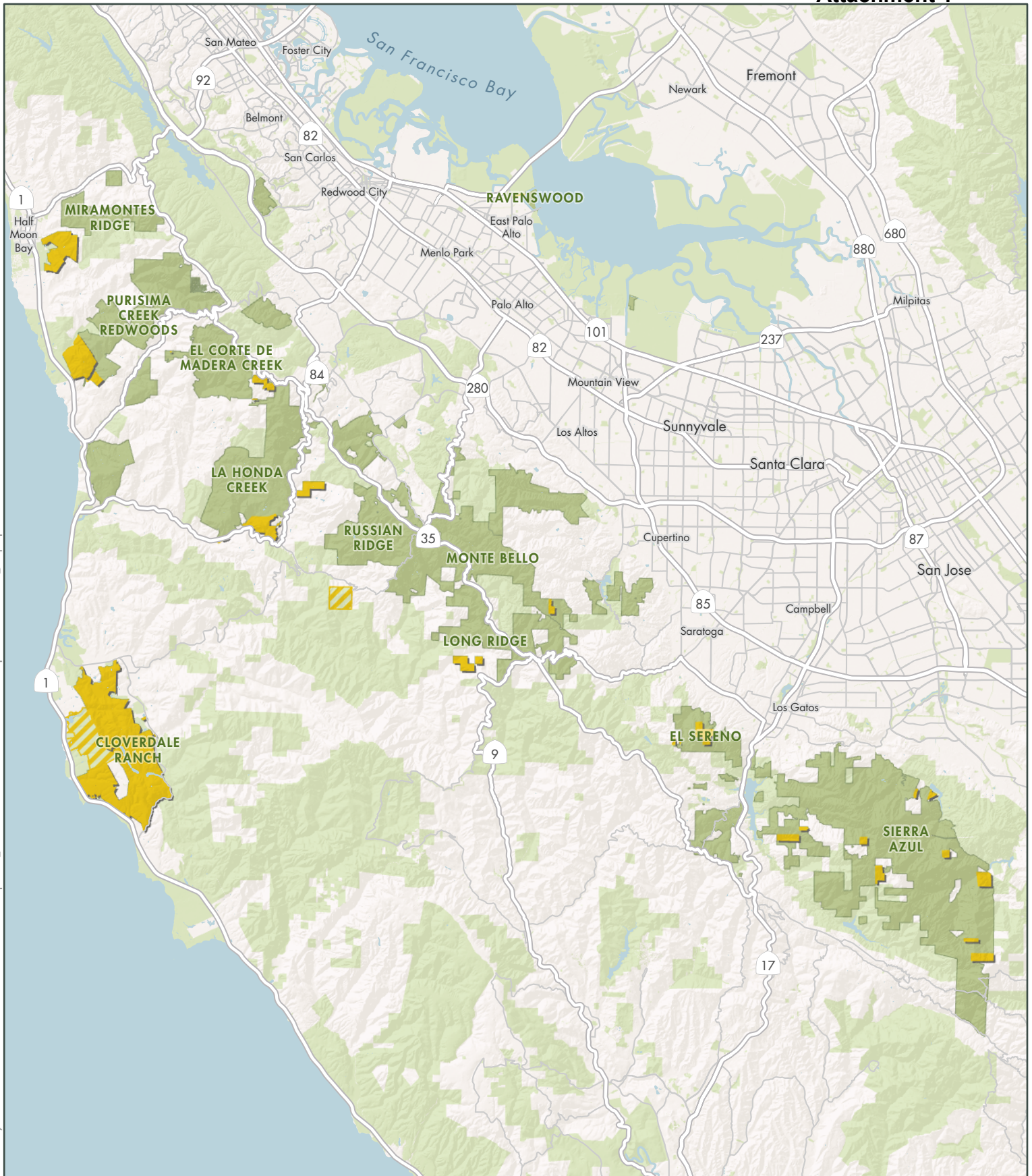
Attachments:

1. Land Acquisitions Funded by Measure AA Map
2. Measure AA Trails Completed and Planned Map
3. Measure AA Five-Year Project List and Optional Project List for FY24 through FY28

###

Path: G:\Projects\A_Districtwide\MeasureAA\MeasureAAExplorer\MeasureAA_Map.aprx

Created By: acostanza



Land Acquisitions Using MAA Funds

Land purchased or augmented by grant funds since 2014

- Midpen preserves
- Other protected lands
- Private property
- MAA land: Fee
- MAA land: Easements, management lease agreements

Midpeninsula Regional
Open Space District
(Midpen)
10/21/2024



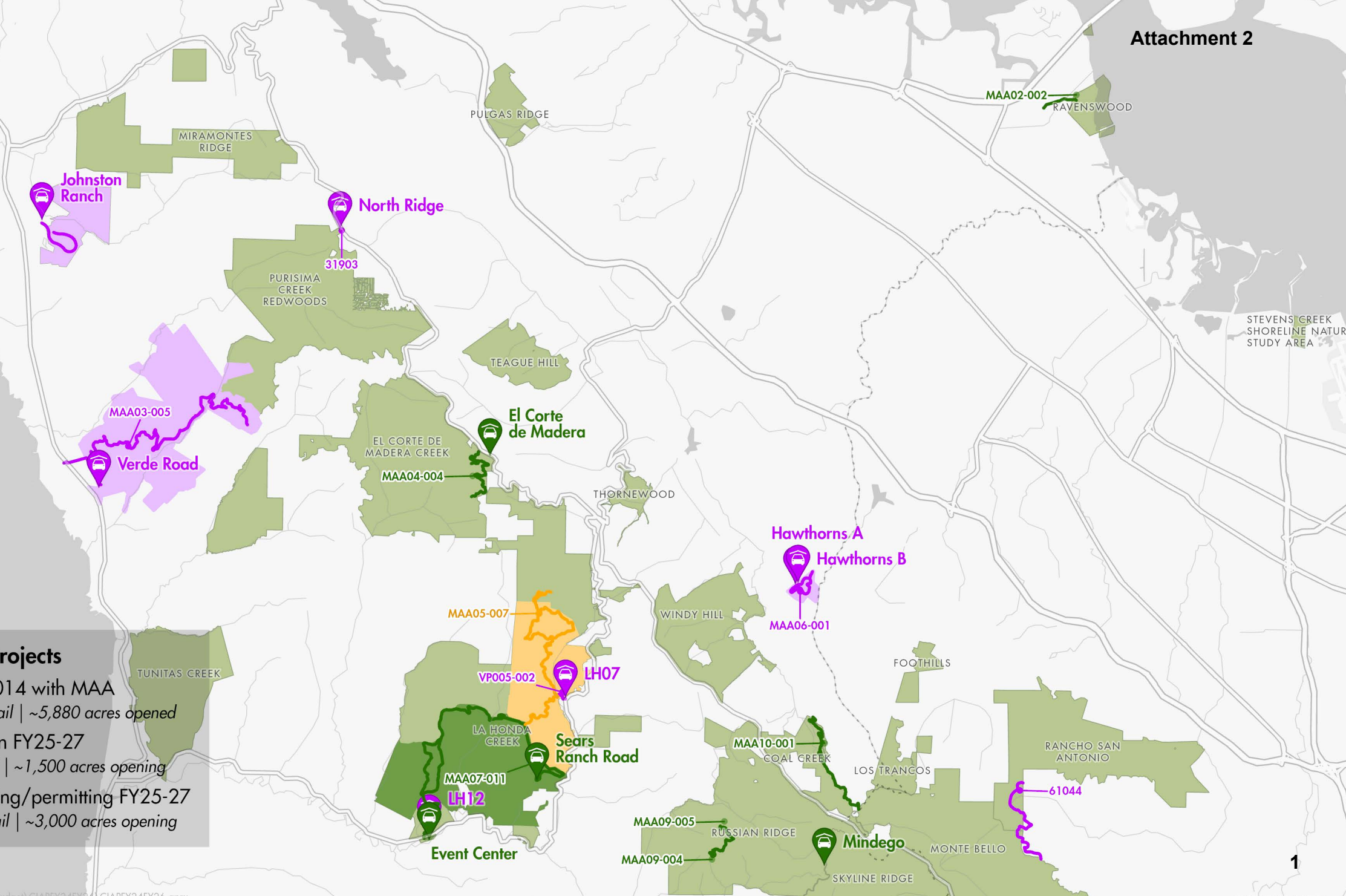
While the District strives to use the best available digital data, these data do not represent a legal survey and are merely a graphic illustration of geographic features.

Public Access CIAP Projects

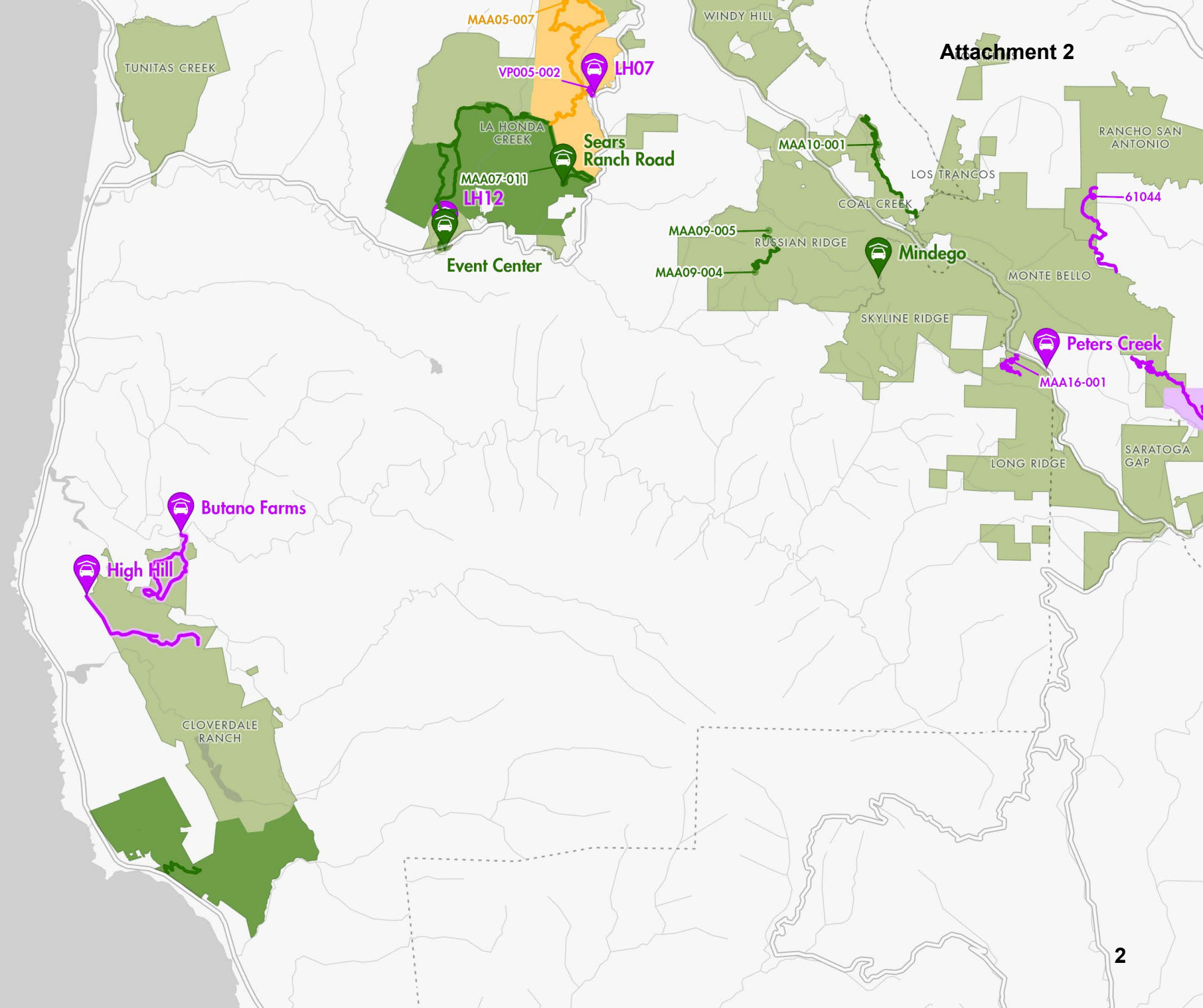
- Complete since 2014 with MAA
34.5 miles of new trail | ~5,880 acres opened
- Under construction FY25-27
~7 miles of new trail | ~1,500 acres opening
- In planning/scoping/permitting FY25-27
30+ miles of new trail | ~3,000 acres opening

10/28/2024



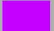
Author: acostanza, Path: G:\Projects\q_Districtwide\Budget\CIAPFY24FY26\CIAPFY24FY26.aprx

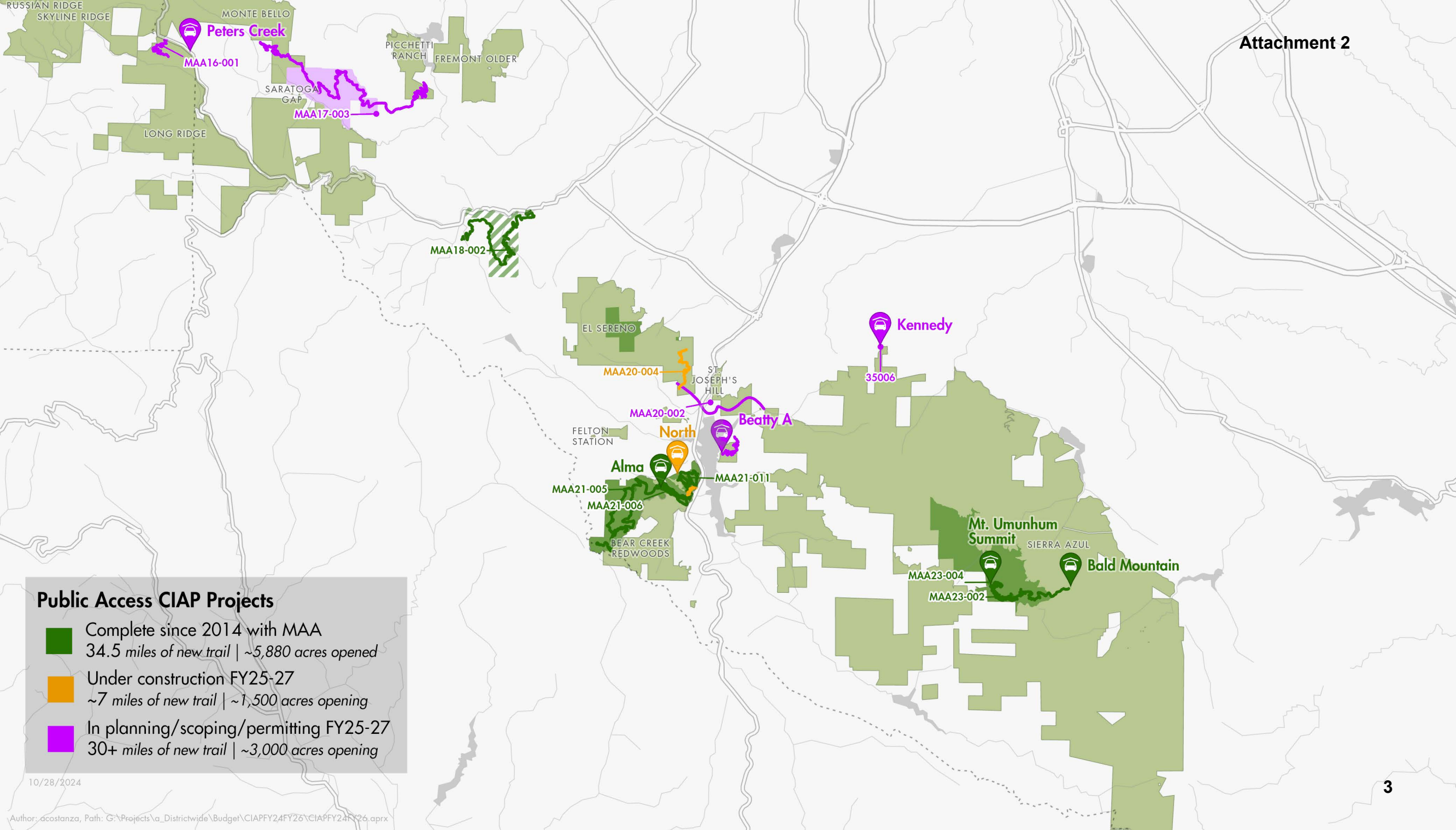


STEVENS CREEK SHORELINE NATURE STUDY AREA



Public Access CIAP Projects

-  Complete since 2014 with MAA
34.5 miles of new trail | ~5,880 acres opened
-  Under construction FY25-27
~7 miles of new trail | ~1,500 acres opening
-  In planning/scoping/permitting FY25-27
30+ miles of new trail | ~3,000 acres opening



Public Access CIAP Projects

- Complete since 2014 with MAA
34.5 miles of new trail | ~5,880 acres opened
- Under construction FY25-27
~7 miles of new trail | ~1,500 acres opening
- In planning/scoping/permitting FY25-27
30+ miles of new trail | ~3,000 acres opening

10/28/2024

MAA Portfolio No.	Project Name	Project Description
<p>AA01- Miramontes Ridge: <i>Gateway to the Coast Public Access, Stream Restoration and Agriculture Enhancement</i></p>	<p>Madonna Bridge Replacement</p>	<p>Replace current interior bridge with bridge or culvert crossing. The current bridge is weight limited and does not allow for emergency vehicle access.</p>
<p>AA01- Miramontes Ridge: <i>Gateway to the Coast Public Access, Stream Restoration and Agriculture Enhancement</i></p>	<p>Water Infrastructure Development</p>	<p>Investigate and implement alternative water supply at Madonna Creek Ranch to replace agricultural water currently provided through in-stream impoundment on steelhead fisheries stream. Complete evaluation of restoration plans for Madonna Creek for steelhead and California-red legged frog.</p>
<p>AA01- Miramontes Ridge: <i>Gateway to the Coast Public Access, Stream Restoration and Agriculture Enhancement</i></p>	<p>Public Access and Land Preservation</p>	<p>Continue to work with City of Half Moon Bay, State Parks and other public and private entities to improve public access and preserve scenic open space at Johnston Ranch area of Miramontes Ridge Open Space Preserve. Partner with the City of Half Moon Bay on shared/expanded parking and new trails at Johnston House and Johnston Ranch Uplands properties.</p>
<p>AA02- Regional: <i>Bayfront Habitat Protection and Public Access Partnerships</i></p>	<p>Stevens Creek Tidal Wetland Restoration</p>	<p>Implement Board direction to improve snowy plover habitat in the short term. Pursue partnership opportunities with South Bay Salt Ponds Restoration Project, San Francisco Estuary Institute, NASA, SCVWD, Google, and local Cities.</p>
<p>AA03- Purisima Creek Redwoods: <i>Purisima-to-Sea Trail, Watershed Protection, and Conservation Grazing</i></p>	<p>Purisima-to-the-Sea Trail and Parking Area</p>	<p>Pursue new trail alignment from Bald Knob to Verde Road, with a new parking area off Verde Road and trail connection to the Cowell parking area along Highway 1; the new preserve trail would connect the Bay Area Ridge Trail on Hwy 35 to the Coastal Trail on Hwy 1.</p>
<p>AA03- Purisima Creek Redwoods: <i>Purisima-to-Sea Trail, Watershed Protection and Conservation Grazing</i></p>	<p>Pond Restoration</p>	<p>Restore upland ponds to enhance habitat for California red-legged frog and other sensitive aquatic species and improve water availability for cattle grazing.</p>

MAA Portfolio No.	Project Name	Project Description
<p>AA03- Purisima Creek Redwoods: <i>Purisima-to-Sea Trail, Watershed Protection, and Conservation Grazing</i></p>	<p>Site Clean Up and Soil Remediation</p>	<p>Conduct site clean up and soil remediation around existing empty oil tank to address safety issues that predate District acquisition of the property (Purisima Uplands)</p>
<p>AA04- El Corte de Madera Creek: <i>Bike Trail and Water Quality Projects</i></p>	<p>Pursue Land Conservation Opportunities</p>	<p>Continue to seek or respond to opportunities to acquire open space lands to complete gaps in the Bay Area Ridge Trail in the vicinity of El Corte De Madera Creek Open Space Preserve.</p>
<p>AA05- La Honda Creek: <i>Upper Area Recreation, Habitat Restoration and Conservation Grazing Projects</i></p>	<p>Phase 2 - Bridge Replacements (2)</p>	<p>Design, engineering, permitting, CEQA, and replacement of one bridge if necessary and replace one major culvert at LH04 off Skyline Boulevard (located in northernmost area).</p>
<p>AA05- La Honda Creek: <i>Upper Area Recreation, Habitat Restoration and Conservation Grazing Projects</i></p>	<p>La Honda Creek Parking and Trailhead Access</p>	<p>Implement Board direction to proceed with Public Access Working Group input and Planning and Natural Resources Committee recommendations to conduct a feasibility study for a suite of options to open public access to the central area of the preserve.</p>
<p>AA05- La Honda Creek: <i>Upper Area Recreation, Habitat Restoration and Conservation Grazing Projects</i></p>	<p>Grazing and Water Systems Infrastructure</p>	<p>Complete grazing infrastructure improvements at Lone Madrone Ranch that improve fences, corrals, and stockwater to continue supporting the conservation grazing program while providing greater protections for streams and habitat.</p>
<p>AA05- La Honda Creek: <i>Upper Area Recreation, Habitat Restoration and Conservation Grazing Projects</i></p>	<p>Pursue Land Conservation Opportunities</p>	<p>Continue to seek or respond to opportunities to acquire open space lands to complete gaps in the Bay Area Ridge Trail in the vicinity of La Honda Creek Open Space Preserve.</p>
<p>AA05- La Honda Creek: <i>Upper Area Recreation, Habitat Restoration and Conservation Grazing Projects</i></p>	<p>La Honda Fisheries Restoration</p>	<p>Address erosion and sediment input from legacy roadcuts/skid roads within the Conservation Management Unit to improve water quality and fisheries/riparian habitat.</p>

MAA Portfolio No.	Project Name	Project Description
<p>AA05- La Honda Creek: <i>Upper Area Recreation, Habitat Restoration and Conservation Grazing Projects</i></p>	<p>Phase II Trail: Red Barn to Main Ranch Road (connects to La Honda Creek loop)</p>	<p>Design and construct one of two Phase II trails as approved in the Master Plan (Trail 5 connection to Driscoll Ranch via main Ranch Road OR Trail 9 Weeks Creek).</p>
<p>AA05- La Honda Creek: <i>Upper Area Recreation, Habitat Restoration and Conservation Grazing Projects</i></p>	<p>Phase II Trails: Connection between the Red Barn/Central area and Upper La Honda Creek</p>	<p>Design and construct a new multi-use trail to connect the Red Barn/central area of the preserve to trails located in the former Dyer area of upper La Honda Creek. This multi-use trail would offer an opportunity to extend the regional Bay Area Ridge Trail and in the future, potentially connect trail users to El Corte de Madera Creek Preserve.</p>
<p>AA06- Windy Hill: <i>Trail Improvements, Preservation and Hawthorns Area Historic Partnership</i></p>	<p>Hawthorns Area Plan</p>	<p>Complete the Hawthorns Area Plan, conduct CEQA review and coordinate with the Town on the permitting process.</p>
<p>AA06- Windy Hill: <i>Trail Improvements, Preservation and Hawthorns Area Historic Partnership</i></p>	<p>Hawthorns Area Plan Implementation</p>	<p>Working with partners, implement area plan elements, including new public access improvements and natural resource enhancements.</p>
<p>AA07- La Honda Creek: <i>Driscoll Ranch Public Access, Endangered Wildlife Protection and Conservation Grazing</i></p>	<p>Forest Restoration and Road Rehabilitation</p>	<p>Conduct forestry restoration activities to improve forest health and sustainability and undertake watershed/road improvements located outside of the Conservation Management Unit (covered by MAA05).</p>
<p>AA10- Coal Creek: <i>Reopen Alpine Road for Trail Use</i></p>	<p>Alpine Road Trail Improvements</p>	<p>Complete engineering design, CEQA review, permitting, and construct trail improvements to properly convert an abandoned road into a sustainable regional trail and reduce erosion of the old roadbed to improve downstream water quality.</p>
<p>AA10- Coal Creek: <i>Reopen Alpine Road for Trail Use</i></p>	<p>Meadow Trail Re-route</p>	<p>Reroute an existing trail to improve public access and properly decommission a high priority sediment site to improve downstream water quality.</p>

MAA Portfolio No.	Project Name	Project Description
<p>AA11- Rancho San Antonio: <i>Interpretive Improvements, Refurbishing, and Transit Solutions</i></p>	<p>Non-Motorized Mobility, Transit Connections and Parking Alternatives</p>	<p>Engage stakeholders and partner agencies to explore and implement non-motorized mobility, transit options and parking alternatives for Rancho San Antonio. Currently underway, this project would provide high beneficial impact for recreational users and leverage partnerships.</p>
<p>AA16- Long Ridge: <i>Trail, Conservation and Habitat Restoration Projects (Saratoga)</i></p>	<p>Long Ridge Parking</p>	<p>Initiate discussions with Santa Clara County Parks, Caltrans and other stakeholders to scope potential sites to formalize parking. Conduct feasibility study for parking/trailhead/restrooms options. (Requested by Director Kishimoto)</p>
<p>AA16- Long Ridge: <i>Trail, Conservation and Habitat Restoration Projects</i></p>	<p>Long Ridge Trail Connections to Eagle Rock and Devil's Canyon</p>	<p>Formalize new 1-mile trail connections to the highly scenic Devils Canyon waterfall and Eagle Rock overlooking the Pescadero Creek watershed to prevent social trails that can degrade soils and vegetation. It may be possible to connect both sites with a loop trail through Tafoni sandstone formations. Consider opportunity to partner with the Bay Area Ridge Trail Council.</p>
<p>AA19- El Sereno: <i>Dog Trails and Connections</i></p>	<p>Regional Trail Connection to Sanborn & Lexington County Parks</p>	<p>Pending the securing of trail easements, this project would complete a regional trail connection between El Sereno Open Space Preserve and Sanborn and Lexington Reservoir County Parks via the regional trail crossing at Highway 17.</p>
<p>AA19- El Sereno: <i>Dog Trails and Connections</i></p>	<p>Spooky Knoll Trail</p>	<p>Located in the southeastern area of El Sereno Open Space Preserve, this proposed trail loop would enhance a regional trail corridor and potentially add to section to the Bay Area Ridge Trail from the Hwy 17 crossing to Sanborn County Park. Also provides a rare loop experience in the preserve.</p>
<p>AA20- South Bay Foothills: <i>Wildlife Passage and Ridge Trail Improvements</i></p>	<p>HWY 17 Bay Area Ridge Trail Crossing</p>	<p>In conjunction with the wildlife crossing, implement a public trail crossing across Highway 17 to connect trail systems located to the east and west of the highway.</p>
<p>AA20- South Bay Foothills: <i>Wildlife Passage and Ridge Trail Improvements</i></p>	<p>HWY 17 Wildlife Crossing</p>	<p>Work with partners to engineer and install wildlife crossing improvements at Highway 17.</p>

MAA Portfolio No.	Project Name	Project Description
<p>AA21- Bear Creek Redwoods: <i>Public Recreation and Interpretive Projects</i></p>	<p>Alma College Site Rehabilitation</p>	<p>Complete the Alma College site remediation and stabilization to safely open the area to public access, education, and interpretation.</p>
<p>AA21- Bear Creek Redwoods: <i>Public Recreation and Interpretive Projects</i></p>	<p>Phase II Trails: Multi-Use Links</p>	<p>Design and construct new (or improve existing) trails, to provide a multi-use trail through the Preserve, linking the Los Gatos Creek Trail with Summit Road. Fulfills Preserve Plan goals to provide through-access for bikes. Project presents an opportunity to partner with CalTrans and Santa Clara County.</p>
<p>AA21- Bear Creek Redwoods: <i>Public Recreation and Interpretive Projects</i></p>	<p>Phase II Trails: Public Loop Trail to the Stables</p>	<p>Provide a new and improved trail connection to the Stables in the northeastern Preserve that remedies existing erosion/maintenance issues and enhances the visitor experience.</p>
<p>AA21- Bear Creek Redwoods: <i>Public Recreation and Interpretive Projects</i></p>	<p>Phase II Trails: Briggs Creek Trail</p>	<p>Address erosion/maintenance issues on heavily-used trail north of stables and improve stream crossings to allow year-round patrol use.</p>
<p>AA21- Bear Creek Redwoods: <i>Public Recreation and Interpretive Projects</i></p>	<p>Phase II Trails: Alma College Loop Trail</p>	<p>Improve existing roads flanking ridgeline to reduce erosion and provide year-round patrol access from the Alma parking lot to the eastern Preserve.</p>
<p>AA21- Bear Creek Redwoods: <i>Public Recreation and Interpretive Projects</i></p>	<p>Bear Creek Stables Repairs</p>	<p>Implement site repairs at Bear Creek Stables to enhance public safety, improve site drainage, and extend life of existing structures. Confirm long-term water needs and implement water infrastructure improvements.</p>
<p>AA22- Sierra Azul: Cathedral Oaks Public Access and Conservation Projects</p>	<p>Wildlife Crossing Improvements on Alma Bridge Rd</p>	<p>Work with partners to design and construct wildlife crossing structures to reduce road mortality impacts and protect migrating newts traveling across Alma Bridge Road to access Lexington Reservoir for breeding.</p>
<p>AA22- Sierra Azul: <i>Cathedral Oaks Public Access and Conservation Projects</i></p>	<p>Pursue Land Conservation Opportunities</p>	<p>Pursue purchase of lands with prior option rights (fee and easement).</p>
<p>AA24- Sierra Azul: <i>Rancho de Guadalupe Family Recreation</i></p>	<p>Pursue Land Conservation Opportunities</p>	<p>Pursue purchase of lands with prior option rights (fee and easement).</p>

MAA Portfolio No.	Project Name	Project Description
<p>AA02- Regional: <i>Bayfront Habitat Protection and Public Access partnerships</i></p>	<p>Pursue Land Conservation Opportunities</p>	<p>Pursue partnership opportunities to preserve additional bayfront open space. (Requested by Director Kishimoto)</p>
<p>AA03- Purisima Creek Redwoods: <i>Purisima-to-Sea Trail, Watershed Protection and Conservation Grazing</i></p>	<p>Fish Passage / Barrier Removal (Lobitos)</p>	<p>Develop and implement fish passage improvement design plans to remove barriers to steelhead migration at Verde Road (San Mateo County) and Highway 1 (Caltrans) culverts.</p>
<p>AA04- El Corte de Madera Creek: <i>Bike Trail and Water Quality Projects</i></p>	<p>Single use biking/hiking trails.</p>	<p>Explore a potential revision to District policies to allow single use, bike only trails. If change is approved, proceed with planning and implementation of single use bike and hiking trails.</p>
<p>AA06- Windy Hill: <i>Trail Improvements, Preservation and Hawthorns Area Historic Partnership</i></p>	<p>Hawthorns Historic Area</p>	<p>Evaluate partnerships, develop plan for historic area, implement Board direction on structure retention and potential repairs or improvements.</p>
<p>AA07- La Honda Creek: <i>Driscoll Ranch Public Access, Endangered Wildlife Protection and Conservation Grazing</i></p>	<p>Staging Area and Trail Connections for Event Center and Apple Orchard Property</p>	<p>Explore, and if feasible, implement a new staging area with equestrian parking and trail connections to further Master Plan goals for public access. New staging area would formalize a second general parking area for the lower area of the preserve that accommodates horse trailers. Planned trail connections from the Event Center would connect to the new Harrington Creek Trail in Lower La Honda Creek.</p>

MAA Portfolio No.	Project Name	Project Description
<p>AA08- La Honda Creek/Russian Ridge: Preservation of Upper San Gregorio Watershed & Ridge Trail Completion</p>	<p>Pursue Land Conservation Opportunities</p>	<p>Seek or respond to general land conservation acquisition or partnership opportunities to complete Bay Area Ridge Trail multiuse connections and gaps.</p>
<p>AA11- Rancho San Antonio: Interpretive Improvements, Refurbishing, and Transit Solutions</p>	<p>Rancho San Antonio Welcome Center</p>	<p>Plan, conduct CEQA review, secure permits, and construct a public welcome center (one option: an open-air "plaza").</p>
<p>AA12- Peninsula/South Bay Cities: <i>Partner to Complete Middle Stevens Creek Trail</i></p>	<p>Stream Corridor Restoration</p>	<p>Support work by partners to complete stream corridor restoration and steelhead habitat enhancement in areas below the Stevens Creek dam.</p>
<p>AA13- Cloverdale: <i>Wildlife Protection, Grazing, and Trail Connections</i></p>	<p>Natural Resource Restoration, Grazing Infrastructure Improvements and Minor Public Access Improvements</p>	<p>Contingent on acquisition of Cloverdale property, implement critical natural resource restoration improvements, conservation grazing infrastructure improvements, and install District signage and ADA improvements for existing access trail.</p>
<p>AA14- Regional: <i>Trail Connections and Campgrounds</i></p>	<p>Pursue Land Conservation Opportunities</p>	<p>Seek or respond to general land conservation acquisition or partnership opportunities to connect Russian Ridge and Skyline to nearby protected public lands.</p>

MAA Portfolio No.	Project Name	Project Description
<p>AA15- Regional: <i>Redwood Protection and Salmon Fishery Conservation</i></p>	<p>Pursue Land Conservation</p>	<p>Seek or respond to general land conservation acquisition or partnership opportunities to protect redwood and fisheries habitat.</p>
<p>AA16- Long Ridge: Trail, Conservation and Habitat Restoration Projects (Saratoga)</p>	<p>Jikoji Pond Area Habitat Enhancement</p>	<p>Reroute public bicycle trail away from Jikoji Pond to better protect San Francisco garter snake habitat.</p>
<p>AA17- Regional: <i>Complete Upper Stevens Creek Trail</i></p>	<p>Upper Stevens Creek Trail</p>	<p>Partner with Santa Clara County Parks to design and construct a new multi-use trail connecting Picchetti Ranch and Montebello Preserves with Upper Stevens Creek County Park, benefitting a wide range of user groups across the region.</p>
<p>AA22- Sierra Azul: <i>Cathedral Oaks Public Access and Conservation Projects</i></p>	<p>Parking Area at Beatty property (Santa Clara County agreement)</p>	<p>Plan, design and construct a new parking area and trail connections to Priest Rock Trail in Lexington Reservoir County Park and Sierra Azul Preserve to fulfill a legal commitment with Santa Clara County. Also fulfills Vision Plan #22 goal for public access within the Cathedral Oaks Area of Sierra Azul. New trail would eventually connect to the Highway 17 Regional Trail Crossing.</p>