



Midpeninsula Regional  
Open Space District

## LEGISLATIVE, FUNDING, AND PUBLIC AFFAIRS COMMITTEE

R-20-101  
September 29, 2020

### AGENDA ITEM 2

#### AGENDA ITEM

Grant Funding from the San Francisco Public Utilities Commission for the Highway 35 Multi-use Trail Crossing and Parking/Multimodal Access Study

#### GENERAL MANAGER'S RECOMMENDATION

Recommend Board adoption of a resolution authorizing the General Manager to accept \$114,000 in grant funding from the San Francisco Public Utilities Commission for the Highway 35 Multi-use Trail Crossing and Parking/Multimodal Access Study.

#### SUMMARY

Midpeninsula Regional Open Space District (District) has an opportunity to receive up to \$114,000 in funding from the San Francisco Public Utilities Commission (SFPUC) for the Highway 35 Multi-use Trail Crossing and Parking/Multimodal Access Study (Project). The Project is a partnership between the District, SFPUC, Bay Area Ridge Trail Council (Ridge Trail Council) and Peninsula Open Space Trust (POST) that will explore opportunities for improving multi-modal access to the Preserve, identifying a feasible trail crossing over Highway 35 to promote regional trail connectivity, and addressing current and future parking area demands. Ridge Trail Council and POST have also contributed partner funding to support the Project.

#### BACKGROUND

SFPUC is proposing to build an approximately 6-mile segment of Bay Area Ridge Trail (Ridge Trail Extension) along the east side of Skyline Boulevard (Highway 35). The Ridge Trail Extension would run south from Highway 92 and terminate near the boundary of the Golden Gate National Recreation Area (GGNRA) Phleger Estate property, across from the Purisima Creek Redwoods Open Space Preserve (Purisima Creek Redwoods) North Ridge parking area.

Over the past several years, SFPUC has been working on the conceptual designs and environmental review for the Ridge Trail Extension on their watershed lands adjacent to Highway 35. In March 2017, the San Francisco City and County Planning Department, as the CEQA lead agency, issued a Notice of Preparation (NOP) to begin the environmental review of the Ridge Trail Extension. In April 2017, the District responded to the NOP requesting to meet with SFPUC and the City and County Planning staff to discuss potential use impacts of the Ridge Trail Extension on the Purisima Creek Redwoods North Ridge parking area. Potential impacts include safety concerns for trail users attempting to park at Purisima Creek Redwoods and cross

Highway 35 to access the Ridge Trail Extension. Additionally, the North Ridge parking area is prone to exceeding capacity on weekends, raising concerns about a potential increase in parking demand that may be generated by users of the Ridge Trail Extension. To improve regional trail connections and trail user safety, the District, Ridge Trail Council and SFPUC identified the need to study the crossing of Highway 35 between the Purisima Creek Redwoods North Ridge parking area and SFPUC's planned Ridge Trail Extension.

## DISCUSSION

Since 2017, the District, SFPUC and Ridge Trail Council have met numerous times to discuss parking and highway crossing concerns related to the Ridge Trail Extension. These discussions identified the need to study the Highway 35 trail crossing between the Purisima Creek Redwoods North Ridge parking area and Ridge Trail Extension. The District also identified the need to study multimodal access opportunities to, and a potential expansion of, the North Ridge parking area. The District subsequently developed a project scope for feasibility and planning studies to evaluate a trail crossing, potential expansion of the North Ridge parking area, and multimodal access opportunities that accommodate visitors to the Ridge Trail and the future Purisima-to-the-Sea and Bay to Sea Trails.

In anticipation of this partnership agreement, a budget for project studies was included in the Fiscal Year 2020-21 Budget and Action Plan and District staff time was properly resource loaded. Future implementation of any recommendations resulting from these project studies would require action by the Board of Directors (Board) and staff exploration of potential funding sources. If implemented, a Highway 35 trail crossing would connect the planned Ridge Trail Extension to over seven miles of designated Ridge Trail in Purisima Creek Preserve on the Harkins Ridge Trail and Purisima Creek Trail.

While the District would lead the project and the studies, SFPUC, POST and Ridge Trail Council have offered to jointly fund the work. The District has received a \$60,000 donation from POST and a \$15,000 donation from the Ridge Trail Council and has the opportunity to receive \$114,000 in funding from SFPUC by entering into a formal grant agreement. The District anticipates contributing \$35,468 in staff time to the project to manage consultants and conduct the preliminary design.

The scope of the project studies funded under the proposed SFPUC grant agreement includes:

1. Traffic studies
2. Boundary/topographic surveys
3. Biological surveys
4. Cultural resource surveys
5. Geotechnical studies
6. Preliminary design and cost estimates of the Highway 35 trail crossing and parking area expansion

In order to receive grant funding, the District would adhere to the grant agreement requirements that include the submittal of project documentation, quarterly reports during the grant period, and copies of invoices totaling the amount of the grant award.

## FISCAL IMPACT

This funding opportunity has a positive impact of \$114,000 toward funding the project. The combined funding from SFPUC, POST and Ridge Trail Council totals \$189,000, which covers the estimated Project consultant costs for project design work, traffic analysis, topographic analysis, biological surveys, cultural surveys and geotechnical analysis. The District and SFPUC estimate that the total Project, including consultant costs and District staff time to manage the consultants, will cost approximately \$224,468.

<b>Hwy 35 Multi-use Trail Crossing and Parking/Multimodal Access Study Project Expenses &amp; Revenues</b>	<b>Amount</b>
<b>Expenses</b>	
Project Consultant Costs	189,000
District In-Kind Match for Staff Time	35,468
<b>Total Expenses</b>	<b>224,468</b>
<b>Revenues</b>	
San Francisco Public Utilities Commission Grant	114,000
Bay Area Ridge Trail Council Donation	60,000
Peninsula Open Space Trust Donation	15,000
<b>Total Revenues</b>	<b>189,000</b>

## PUBLIC NOTICE

Public notice was provided as required by the Brown Act.

## CEQA COMPLIANCE

This item is not a project subject to the California Environmental Quality Act. The proposed project is not subject to the CEQA pursuant to 14 California Code of Regulations, section 15262, in that it would involve only planning studies and feasibility analyses for possible future actions that have not yet been approved, adopted or funded.

## NEXT STEPS

If supported by the Legislative, Funding and Public Affairs Committee, this item will be taken to the full Board for consideration of the proposed resolution authorizing the General Manager to execute the grant agreement. Following authorization of the agreement, District staff would begin the Request for Qualifications and Proposals process to secure the necessary consultant(s) for the project. An award of contract for the selected consultant(s) would then be brought before the Board along with a tentative schedule of key project milestones.

### Attachments:

1. Proposed resolution authorizing the General Manager to accept grant funding from the San Francisco Public Utilities Commission for the Highway 35 Multi-use Trail Crossing and Parking/Multimodal Access Study.
2. Project Location Map

3. Project Location Map with Regional Trails

Responsible Department Head:

Stefan Jaskulak, CFO/Director of Administrative Services

Jane Mark, AICP, Planning Manager

Prepared by:

Jordan McDaniel, Senior Grants & Procurement Technician, Administrative Services

Aaron Peth, Planner III, Planning

Staff contact:

Deborah Hirst, Grants Program Manager, Administrative Services

RESOLUTION NO. \_\_\_\_

**RESOLUTION OF THE BOARD OF DIRECTORS OF THE MIDPENINSULA REGIONAL OPEN SPACE DISTRICT APPROVING THE ACCEPTANCE OF GRANT FUNDS FROM THE SAN FRANCISCO PUBLIC UTILITIES COMMISSION FOR THE HIGHWAY 35 MULTI-USE TRAIL CROSSING AND PARKING/MULTIMODAL ACCESS STUDY**

**WHEREAS**, the San Francisco Public Utilities Commission (the “SFPUC”) is a public agency of the City and County of San Francisco that provides water, wastewater, and electric power services to the city and an additional 1.9 million customers within three San Francisco Bay Area counties; and

**WHEREAS**, SFPUC and the Midpeninsula Regional Open Space District (the “District”) have agreed to jointly fund the Highway 35 Multi-use Trail Crossing and Parking/Multimodal Access Study (the “Project”); and

**WHEREAS**, the Project is a partnership between the District, SFPUC, Bay Area Ridge Trail Council (“Ridge Trail Council”) and Peninsula Open Space Trust (“POST”). Ridge Trail Council and POST have also contributed partner funding to support the Project.

**WHEREAS**, District will enter into an agreement with SFPUC to carry out the Project.

**NOW, THEREFORE, BE IT RESOLVED that the Board of Directors of the Midpeninsula Regional Open Space District hereby:**

1. Approves the award of grant funding from SFPUC for the Project.
2. Certifies the District has or will have sufficient funds to complete the Project and agrees to provide any funds beyond the grant funding provided by SFPUC necessary to complete the Project.
3. Authorizes the General Manager, or designee, to act as a representative of the grantee, to conduct all negotiations, execute and submit all documents including but not limited to agreements, payment requests and so on, which may be necessary for the completion of the project.

\* \* \* \* \*

PASSED AND ADOPTED by the Board of Directors of the Midpeninsula Regional Open Space District on \_\_\_\_\_, 2020, at a regular meeting thereof, by the following roll call vote:

**AYES:**

**NOES:**

**ABSTAIN:**

**ABSENT:**

**ATTEST:**

**APPROVED:**

---

Jed Cyr, Secretary  
Board of Directors

---

Karen Holman, President  
Board of Directors

**APPROVED AS TO FORM:**

---

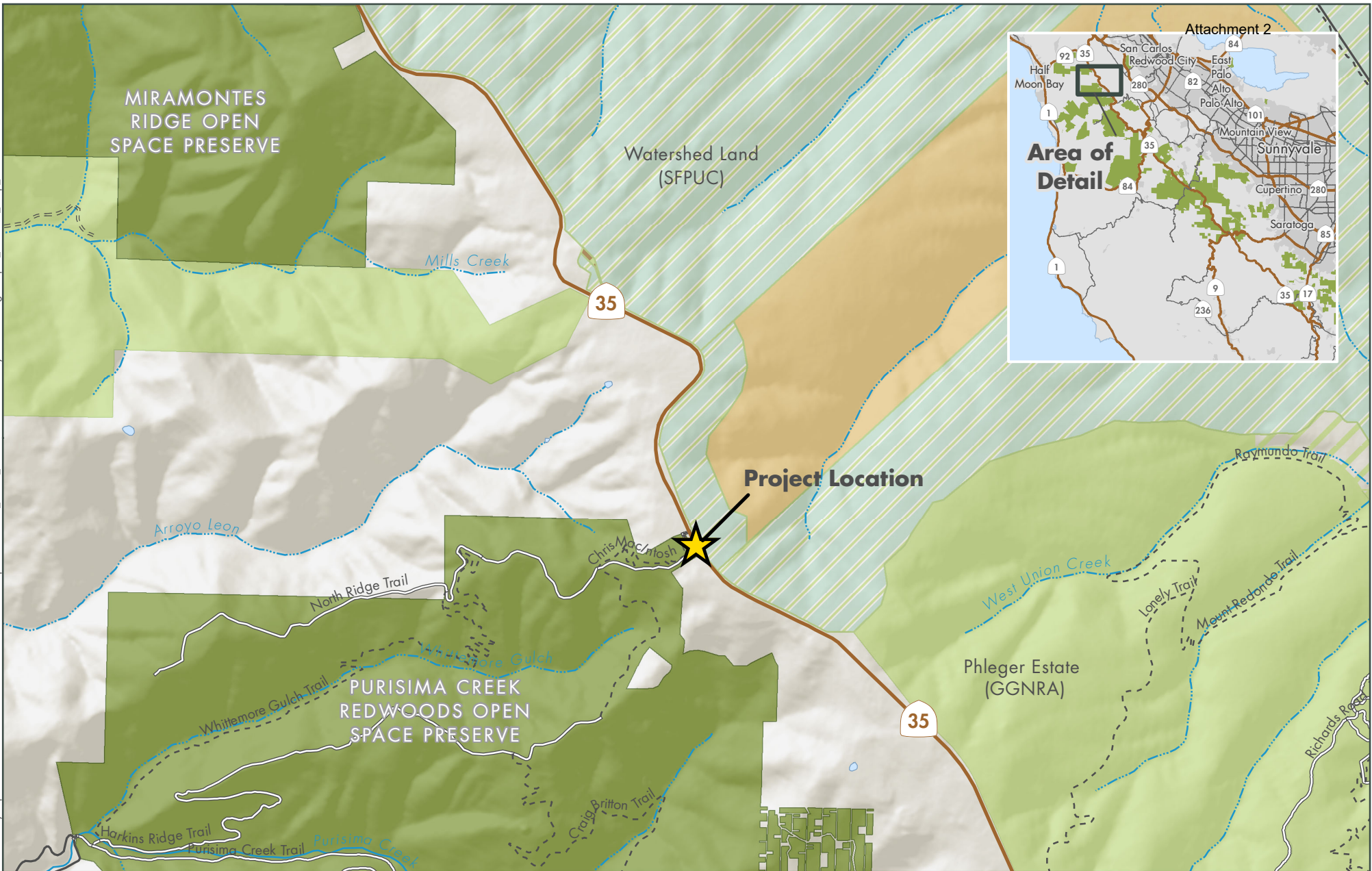
Hilary Stevenson, General Counsel

I, the District Clerk of the Midpeninsula Regional Open Space District, hereby certify that the above is a true and correct copy of a resolution duly adopted by the Board of Directors of the Midpeninsula Regional Open Space District by the above vote at a meeting thereof duly held and called on the above day.

---

Jennifer Woodworth, District Clerk

Path: G:\Projects\Purisima\_Creek\_Redwoods\SFPUC Hwy 35 Crossing\Project\_Location\_Map\_20200902.mxd  
 Created By: apeth



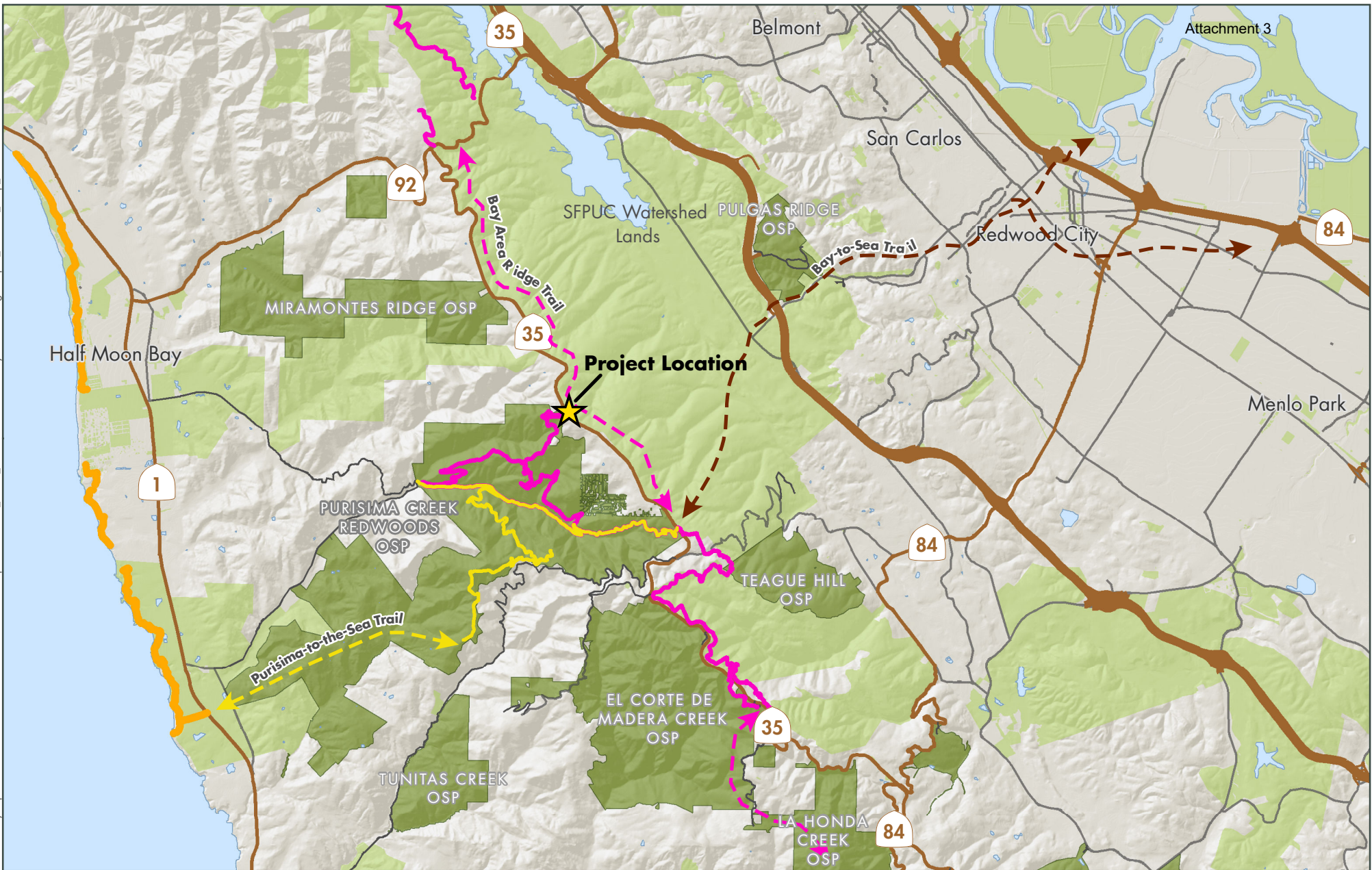
### Highway 35 Crossing and Parking Lot/Multimodal Access Study Location

- |  |   |   |  |
|--|---|---|--|
|  MROSD Preserves  |  Other Protected Lands |  Watershed Land      |  Project Location |
|  Private Property |  Land Trust            |  Other Public Agency |  |

Midpeninsula Regional  
 Open Space District  
 (Midpen)  
 9/2/2020



While the District strives to use the best available digital data, these data do not represent a legal survey and are merely a graphic illustration of geographic features.



### Highway 35 Crossing and Parking Lot/Multimodal Access Study

- MROSD Preserves
- Other Protected Lands
- Private Property
- Bay-to-the-Sea Conceptual Trail
- Existing Purisima-to-Sea Trail
- Purisima-to-the-Sea Conceptual Trail
- Existing Bay Area Ridge Trail
- Proposed Bay Area Ridge Trail
- Cowell-Purisima Trail & Coastal Trail

Midpeninsula Regional  
 Open Space District  
 (Midpen)  
 9/9/2020



While the District strives to use the best available digital data, these data do not represent a legal survey and are merely a graphic illustration of geographic features.