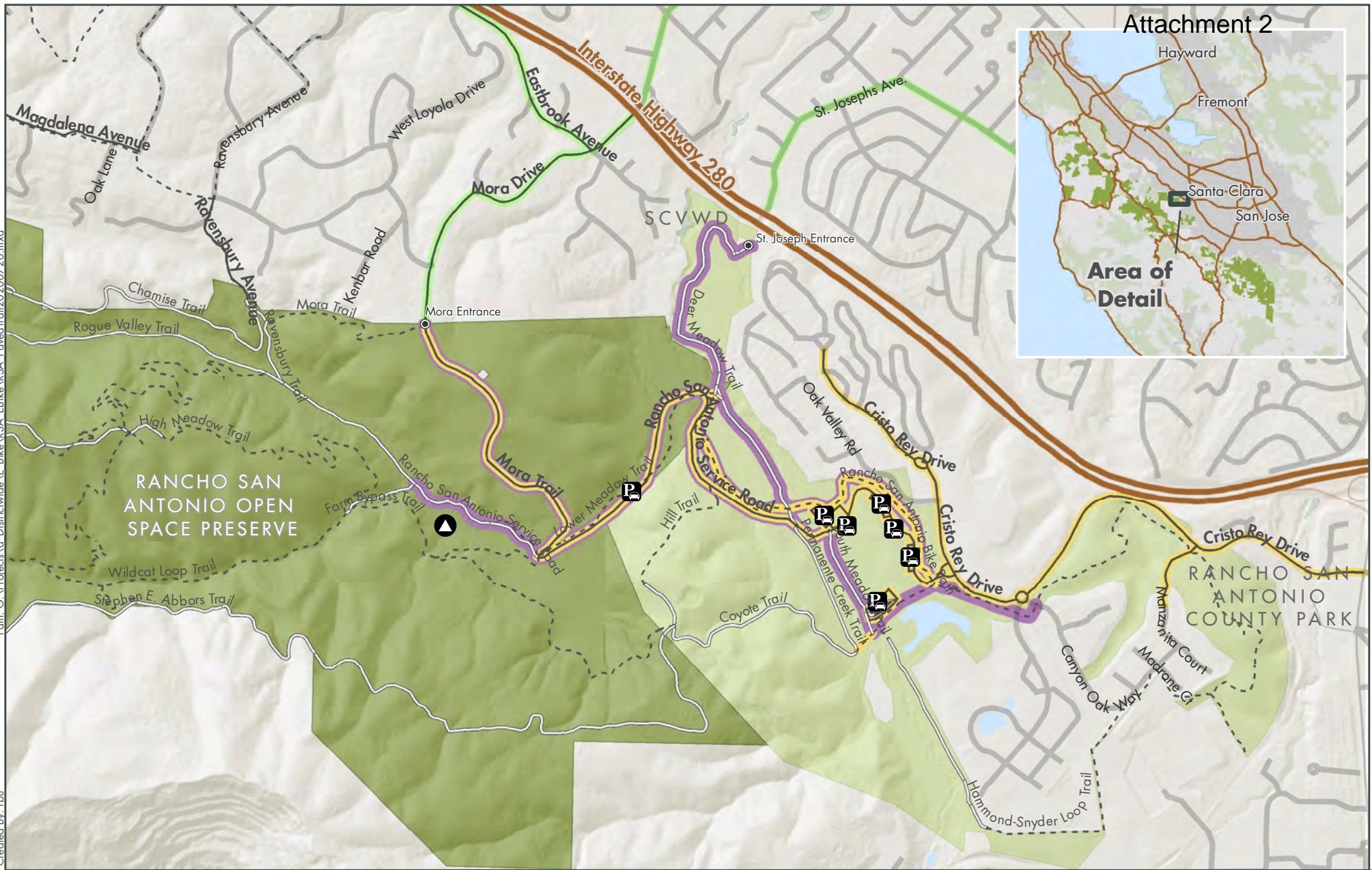


Path: G:\Projects\A-Districtwide\LE Bike\RSA EBike\RSA EBike\Trail\20200720.mxd
Created By: tibu



Rancho San Antonio Proposed Trails for E-bike Use

- | | | | |
|-----------------------|---------------------|--------------------|--------------|
| MROSD Preserves | Paved Surface | Paved Road Width | Parking Area |
| Other Protected Lands | Bicycle Use Allowed | Unpaved Road Width | |
| Watershed Land | Highway | Trail | |
| Private Property | Pedestrian Route | Deer Hollow Farm | |

Midpeninsula Regional
Open Space District
(Midpen)
8/1/2020

Feet
0 500 1,000



While the District strives to use the best available digital data, these data do not represent a legal survey and are merely a graphic illustration of geographic features.