



Midpeninsula Regional  
Open Space District

R-20-61  
Meeting 20-12  
June 10, 2020

## AGENDA ITEM 8

### AGENDA ITEM

Formation of the Lehigh Quarry Review Ad Hoc Committee

### GENERAL MANAGER'S RECOMMENDATION

Form a Lehigh Quarry Review Ad Hoc Committee of the Board pursuant to Board Policy 1.04, *Board Committees*. Consistent with other recent Ad Hoc Committees of the Board, these meetings would be compensable.

### SUMMARY

Lehigh Quarry, the Midpeninsula Regional Open Space District's (District) immediate neighbor to the south of Rancho San Antonio Open Space Preserve, has submitted a Reclamation Plan Amendment to Santa Clara County for review. The General Manager recommends the Board of Directors form an Ad Hoc Committee (Committee) to guide the District's response to the proposed Reclamation Plan Amendment. The Committee would consist of three Board members, appointed by the Board President with consent of the Board.

### DISCUSSION

In May of 2019, Lehigh Hanson, a subsidiary of Heidelberg Cement Group who operates Lehigh Quarry, submitted a Reclamation Plan Amendment ("Rec Plan") to Santa Clara County. Principal components of the proposed amendment include increased mining in various areas, the import of fill from around the Bay Area into the North Quarry pit (as opposed to using stockpiled materials from prior mining), and the modification of a ridgeline and related request to modify a ridgeline easement held by Santa Clara County between the North Quarry and the headwaters of tributaries into Rancho San Antonio Open Space Preserve (see Attachment 1, Reclamation Map). Visitors to Rancho San Antonio Open Space Preserve (see Attachment 2, Rancho Map), as well as the public in surrounding communities have the potential to be further affected by these proposed quarry activities. Additionally, the proposed Rec Plan may pose negative impacts to the ecology of Rancho San Antonio Open Space Preserve and regional ecosystems. An Ad Hoc Committee of the Board is recommended to steer the District's response to the Reclamation Plan Amendment.

Pursuant to Board Policy 1.04, *Board Committees*, the Lehigh Quarry Review Ad Hoc Committee would be composed of three Board members appointed by the Board President with the consent of the Board. This Committee would serve the purpose of reviewing and guiding the District's response to the Reclamation Plan Amendment and the County's response to Lehigh's application.

## **FISCAL IMPACT**

Formation of a new compensable Ad Hoc Committee is not expected to result in a new fiscal impact. The fiscal year budget anticipates both Committee and Board meeting attendance for Board Directors. According to Board Policy 6.06 (Meeting Compensation, Reimbursement of Authorized Necessary Expenses for Performance of Official Duties, and Adoption of Ethics Training Requirements Pursuant to Government Code Section 53232 et seq. (AB1234)), the maximum allowable total compensation per Board member is one hundred dollars (\$100.00) per day and six hundred dollars (\$600.00) per calendar month. The Fiscal Year 2020-21 Budget contains sufficient funds for Board compensation related to meeting attendance.

## **BOARD COMMITTEE REVIEW**

This item was not previously reviewed by a Board Committee.

## **PUBLIC NOTICE**

Public notice for this item was provided as required by the Brown Act.

## **CEQA COMPLIANCE**

This item is not a project subject to the California Environmental Quality Act.

## **NEXT STEPS**

Upon approval by the Board, Committee members would be appointed by the Board President. The General Manager or designee will schedule a kickoff meeting as soon as practicable.

### Attachment(s)

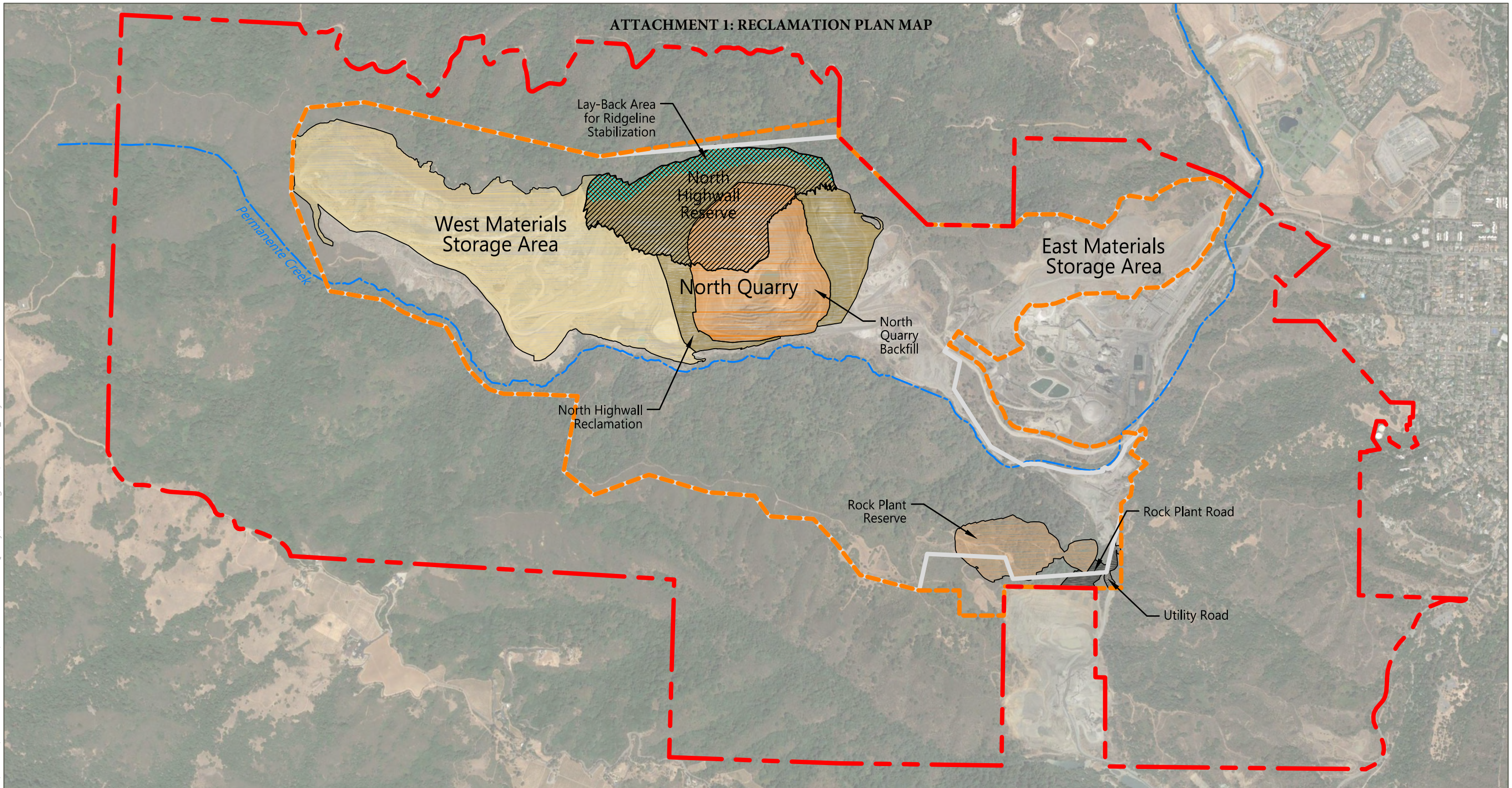
1. Reclamation Plan Map
2. Map of Reclamation Plan and Rancho San Antonio Open Space Preserve

Responsible Department Head:  
Kirk Lenington, Natural Resources Manager

Prepared by:  
Aaron Hébert, Senior Resource Management Specialist











Graphics prepared by:  
Francisco Lopez Tapia, GIS Technician

ATTACHMENT 1: RECLAMATION PLAN MAP

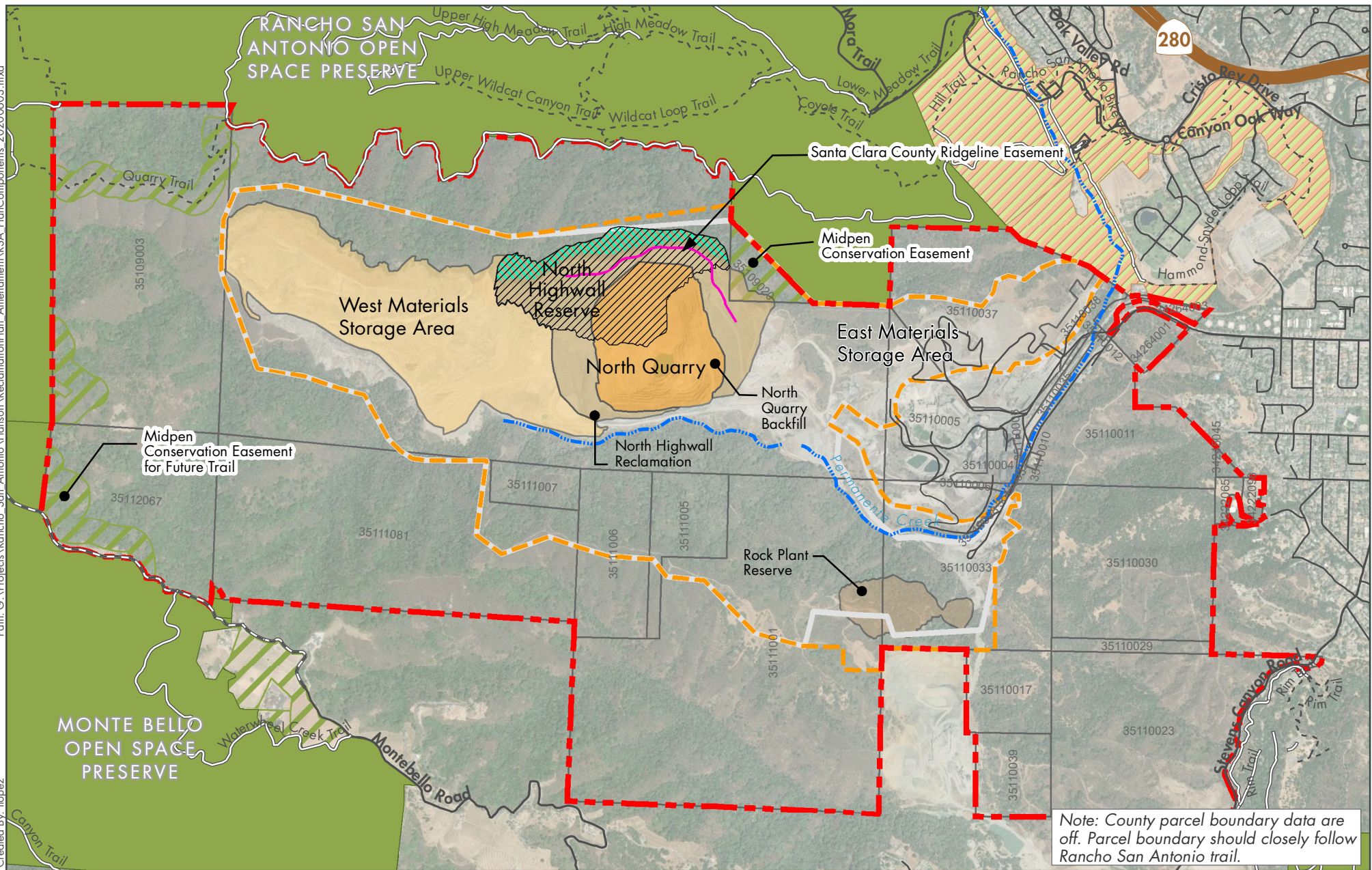


V:\DATA\CURRENT PROJECTS\396 - Permanente Quarry\396 - Figures\19-01-08\_Project Description

SOURCES: AERIAL: Google Earth (2018-08-09);  
 SITE BOUNDARY/RECLAMATION  
 BOUNDARIES/RESERVES: Lehigh Southwest  
 Cement Company, generated in 2018;  
 compiled by Benchmark Resources in 2019

	Property Boundary	(±3,510 acres)		Highwall Reclamation	(±113 acres)		Lay-Back Area	(±20 acres)
	Amended Reclamation Boundary	(±1,312 acres)		North Quarry Backfill	(±93 acres)		North Highwall Reserve	(±101 acres)
	Existing Reclamation Plan Boundary			West Materials Storage Area	(±218 acres)			
	Permanente Creek			Rock Plant Reserve	(±31 acres)			
				Haul Plant Road/Utility Road	(±5 acres)			

Path: G:\Projects\Ranchos\_San\_Antonio\Hanson\ReclamationPlan\_Amendment\RSA\_PlanComponents\_20200603.mxd  
Created By: Iopez



## Attachment 2: Reclamation Plan and Rancho San Antonio Open Space Preserve

- Property Boundary
- Amended Reclamation Boundary
- Existing Reclamation Plan Boundary
- Creek
- West Materials Storage Area
- North Highwall Reclamation
- North Quarry Backfill

Midpeninsula Regional  
Open Space District  
(Midpen)  
6/3/2020



While the District strives to use the best available digital data, these data do not represent a legal survey and are merely a graphic illustration of geographic features.