



# MIDPENINSULA REGIONAL OPEN SPACE DISTRICT

## La Honda Creek Preserve Parking and Trailhead Access Feasibility Study

La Honda Public Access Working Group  
December 12, 2019



# Purpose of Forming the Working Group

- Forum for Board members, community and stakeholders to interact and discuss the project
- Local, community perspectives
- District-wide, ward, user group perspectives
- Input to project team, Planning and Natural Resources Committee, and Board on parking and trailhead access alternatives that meet project goals



# La Honda Parking and Trailhead Access Feasibility Study

## Project Goals and Objectives

- ✿ Establish new public access in the central portion of the Preserve.
- ✿ Design elements to reflect the rural character of the site and the Red Barn.
- ✿ Provide safe public access.
- ✿ Balance public access with grazing activities.
- ✿ Include amenities that facilitate environmental education.
- ✿ Protect scenic views of and from the site.

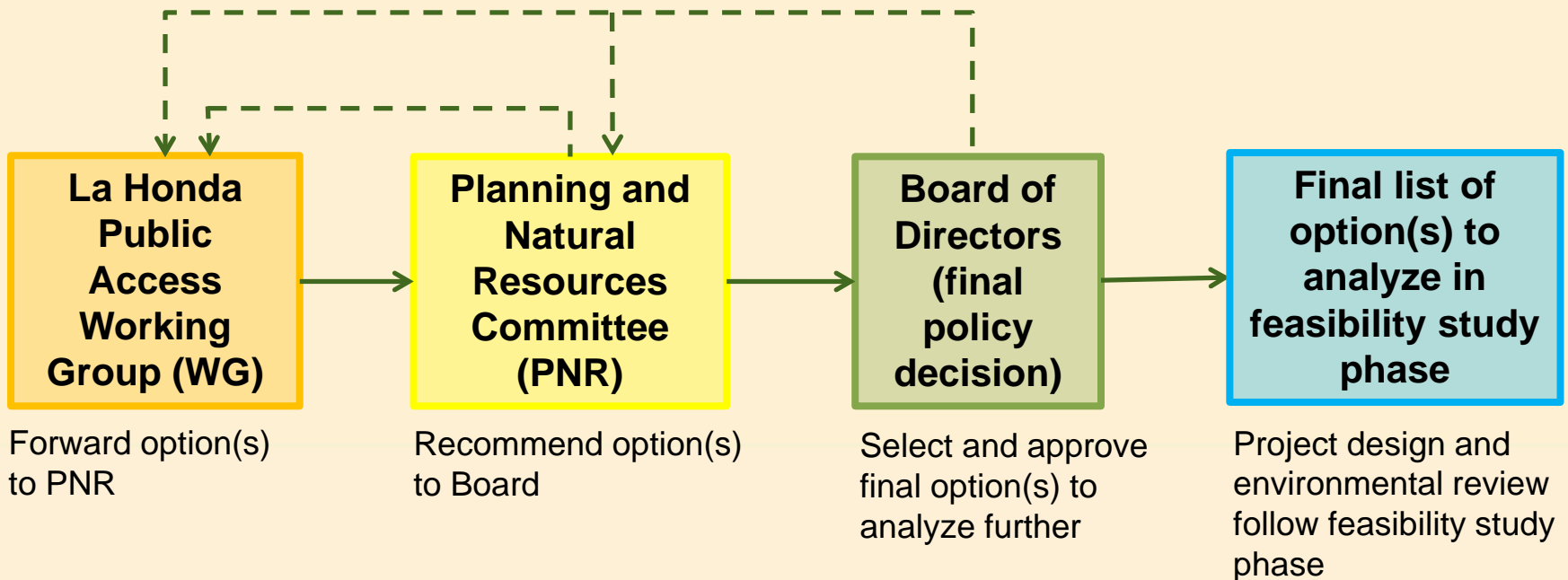




# Decision-Making Process

## PAWG Charge:

Work with the District project team to evaluate option(s) for potential to meet project goals and objectives and recommend option(s) for PNR and Board to forward into feasibility study phase





# Agenda

- 🌿 Welcome / Agenda Overview
- 🌿 Working Group Business
  1. Public comment
  2. Review and approve prior meeting summaries
  3. Bay Area Ridge Trail presentation
  4. Discussion
    - Event Center
    - Sears Ranch Road areas
    - Gate LH07
    - Red Barn areas
    - Other options/iterations
  5. Closing comments
  6. Public comment
- 🌿 Adjournment



# Public Comment





# Meeting Summaries



# Bay Area Ridge Trail Presentation



# Discussion







# Summary of Site Tour Stops

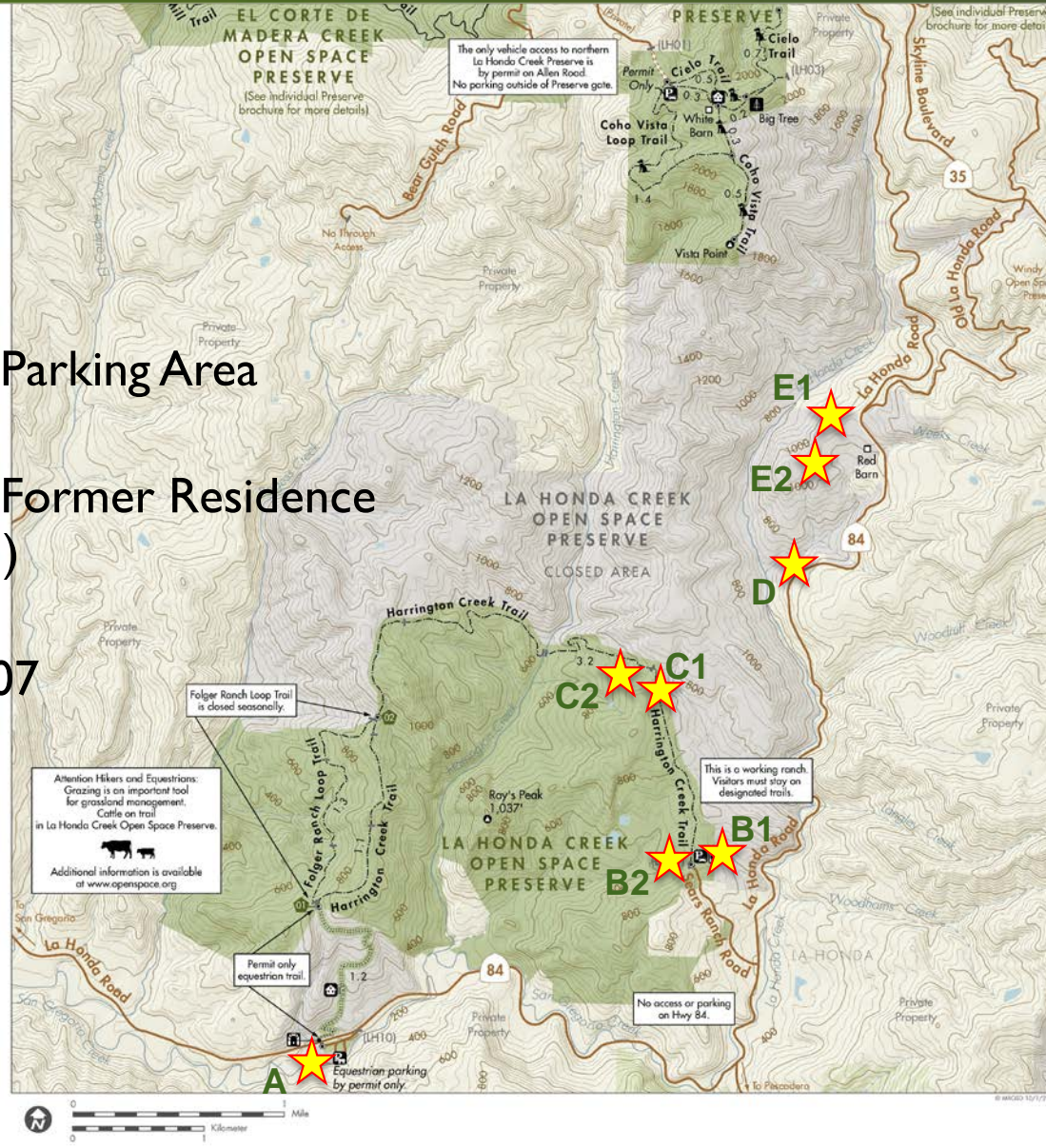
**A:**  
Event Center

**BI & B2:**  
Sears Ranch Road Parking Area

**CI & C2:**  
Sears Ranch Road Former Residence Area (1 mile north)

**D:**  
Preserve Gate LH07

**E1 & E2:**  
Red Barn Area



For More Information  
Visit [www.openspace.org](http://www.openspace.org)  
or call (650) 691-1200

### Map Legend

- Midpen Preserve
- Closed Area - No Public Access
- Other Public Land
- Other Public Land - Restricted Access
- Private or Leased Land - No Public Access
- No Public Entry in Midpen Water Areas
- Road
- Vehicle Driveway
- Equestrian Only
- Hiking, Equestrian
- Hiking, Bicycling, Equestrian
- Trail Junction
- 1 Numbered Trail Junction
- Gate (#)
- Parking lot
- Equestrian Parking
- Restroom
- Point of Interest
- Notable Flora
- Tunnel
- Other Public or Private Building
- Residence

Dogs on Leash Permitted on Designated Trails

Bicycles not permitted in this Preserve

**In case of emergency, call 911 or 24-hour Ranger Dispatch at (650) 968-4411.**

For your safety, and the protection of the preserves:  
The preserve is open from dawn until one-half hour after sunset;  
Please leave natural features, plants, and animals undisturbed;  
Pack it in, pack it out - please do not litter;  
Auto burglaries are increasing;  
Take valuables with you and lock your vehicle.









# A. Event Center – From Driveway looking West

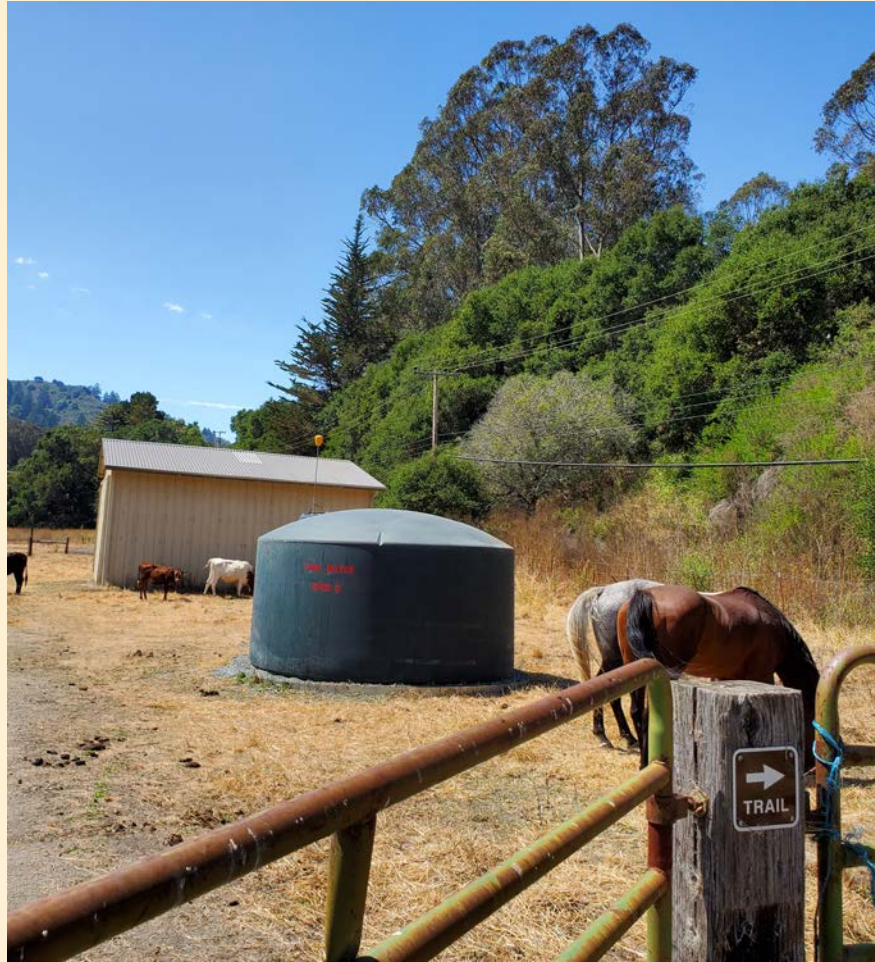


To tunnel  
under Hwy 84



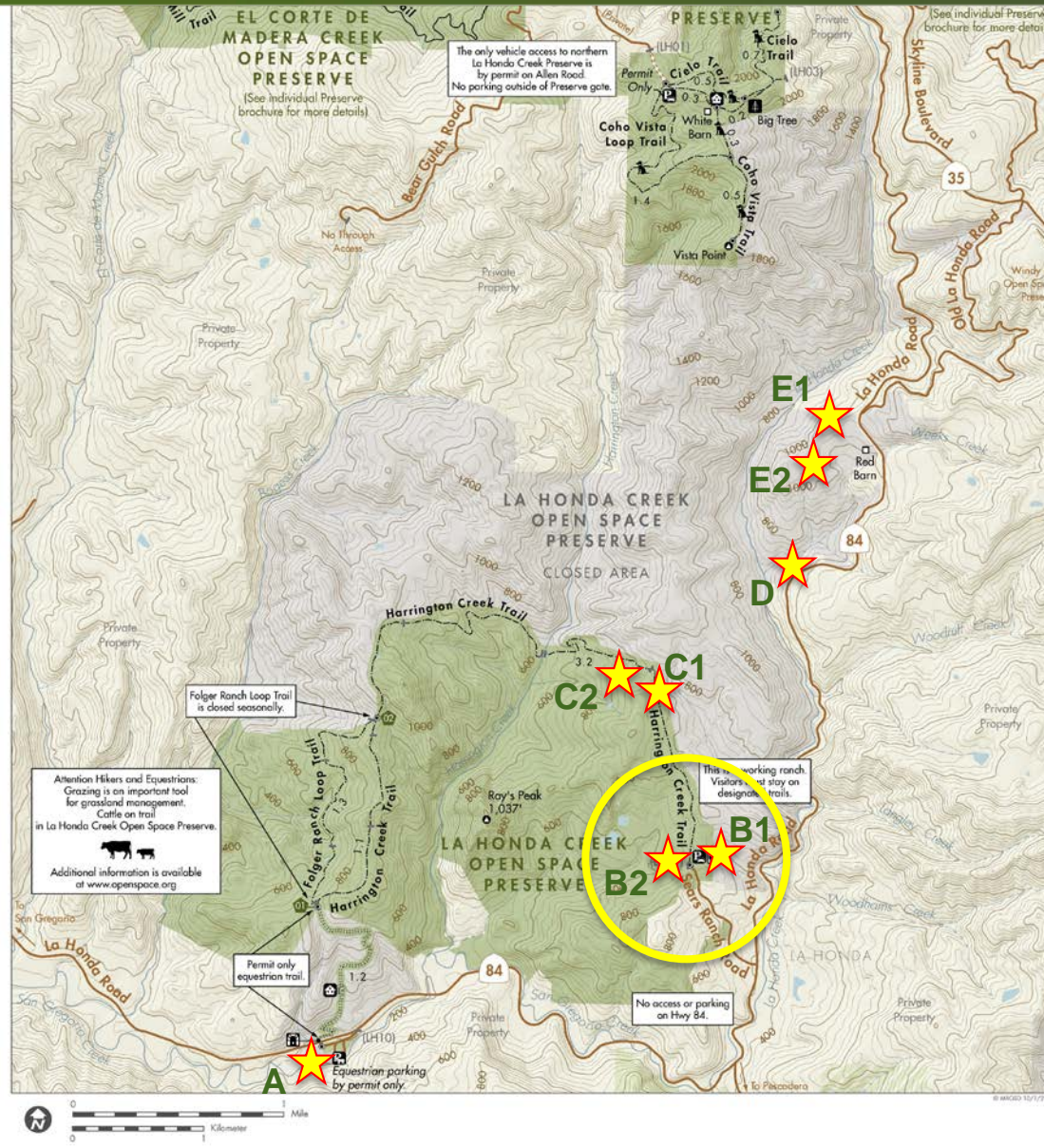


# A. Event Center – Tunnel under Hwy 84 to Preserve





# BI and B2. Sears Ranch Road – Existing Lot Area



**OPEN SPACE**  
For More Information  
Visit [www.openspace.org](http://www.openspace.org)  
or call (650) 691-1200

**Map Legend**

- Midpen Preserve
- Closed Area - No Public Access
- Other Public Land
- Other Public Land - Restricted Access
- Private or Leased Land - No Public Access
- No Public Entry in Midpen Water Areas
- Road
- Vehicle Driveway
- Equestrian Only
- Hiking, Equestrian
- Hiking, Bicycling, Equestrian
- Trail Junction
- Numbered Trail Junction
- Gate (#)
- Parking lot
- Equestrian Parking
- Restroom
- Point of Interest
- Notable Flora
- Tunnel
- Other Public or Private Building
- Residence

- Dogs on Leash Permitted on Designated Trails
- Bicycles not permitted in this Preserve

**In case of emergency, call 911 or 24-hour Ranger Dispatch at (650) 968-4411.**

For your safety, and the protection of the preserves:  
The preserve is open from dawn until one-half hour after sunset;  
Please leave natural features, plants, and animals undisturbed;  
Pack it in, pack it out - please do not litter;  
Auto burglaries are increasing;  
Take valuables with you and lock your vehicle.





# BI. Sears Ranch Road – Expansion of Existing Lot



Expansion  
area looking  
east







## B2. Sears Ranch Road Area – Site West of Parking Lot











# CI. Sears Ranch Road – Panorama of Former Residence Area







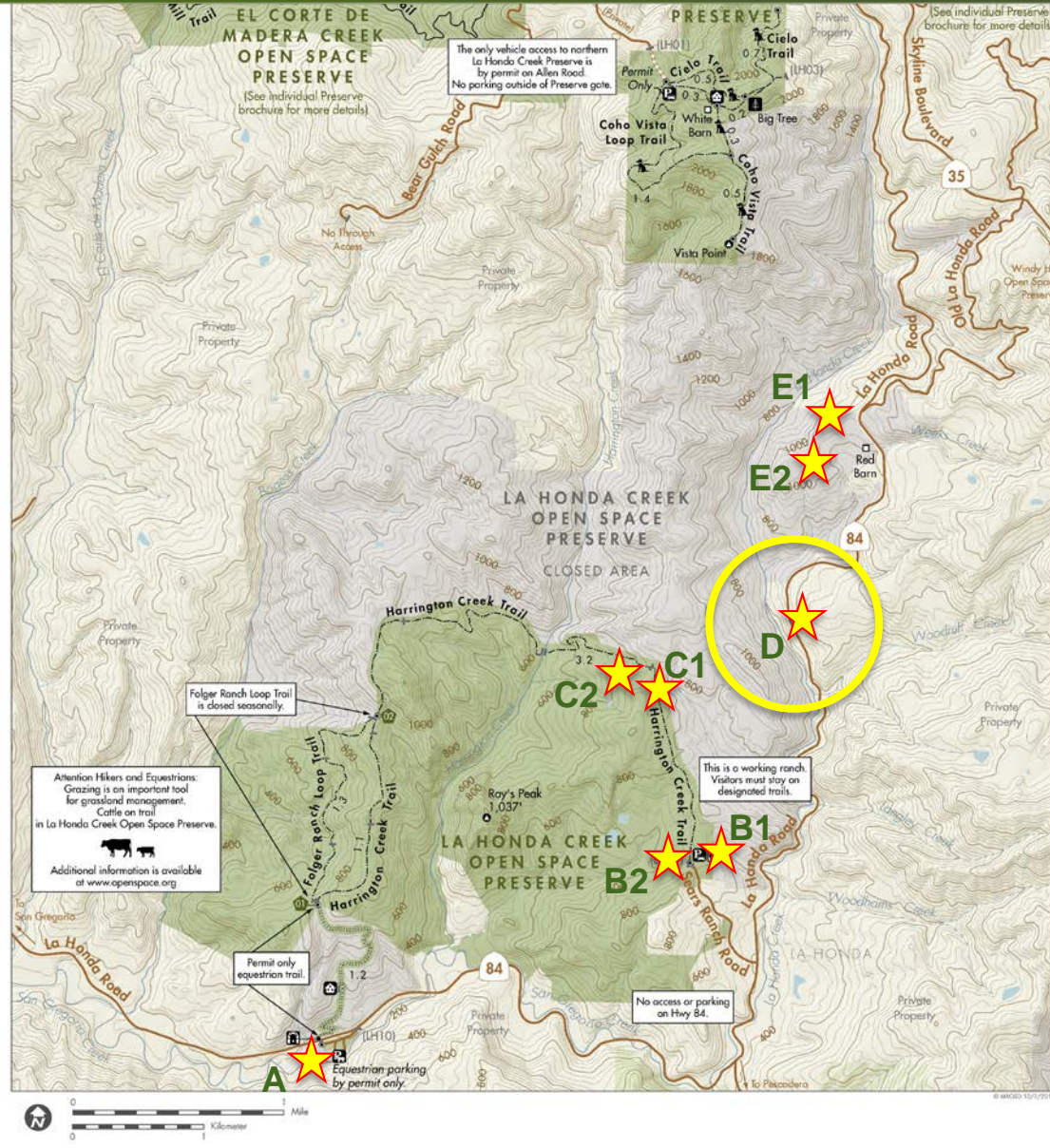
## C2. Sears Ranch Road – Cattle Corral at Former Residence Area







# D. Preserve Gate LH07



**OPEN SPACE** For More Information Visit [www.openspace.org](http://www.openspace.org) or call (650) 691-1200

- Map Legend**
- Midpen Preserve
  - Closed Area - No Public Access
  - Other Public Land
  - Other Public Land - Restricted Access
  - Private or Leased Land - No Public Access
  - No Public Entry in Midpen Water Areas
  - Road
  - Vehicle Driveway
  - Equestrian Only
  - Hiking, Equestrian
  - Hiking, Bicycling, Equestrian
  - Trail Junction
  - Numbered Trail Junction
  - Gate (#)
  - Parking lot
  - Equestrian Parking
  - Restroom
  - Point of Interest
  - Notable Flora
  - Tunnel
  - Other Public or Private Building
  - Residence

- Dogs on Leash Permitted on Designated Trails
- Bicycles not permitted in this Preserve

**In case of emergency, call 911 or 24-hour Ranger Dispatch at (650) 968-4411.**

For your safety, and the protection of the preserves:

The preserve is open from dawn until one-half hour after sunset; Please leave natural features, plants, and animals undisturbed;

Pack it in, pack it out- please do not litter;

Auto burglaries are increasing; Take valuables with you and lock your vehicle.





## D. Gate LH07 – Interior View Northeast







## D. Gate LH07 – Hwy 84









# E1 and E2. Red Barn Area – Close Up of Sites

E1. Site behind  
Ranger Residence



E2. Corral area below  
and west of Red Barn



LHC Red Barn

© 2018 Google

Google Earth





# EI. Red Barn Area – Site Behind Ranger Residence





## E2. Red Barn Area – Panorama of Corral Area Below Red Barn







# Other Options/Iterations

## 🌿 Limited use

- Permit only access for hiking/equestrian use
- Docent-led events

## 🌿 Distribution of use

- Relocate amenities, e.g. educational elements
- Smaller lots
- Separate users

## 🌿 Other?



# Closing Comments





# Next Steps/Schedule

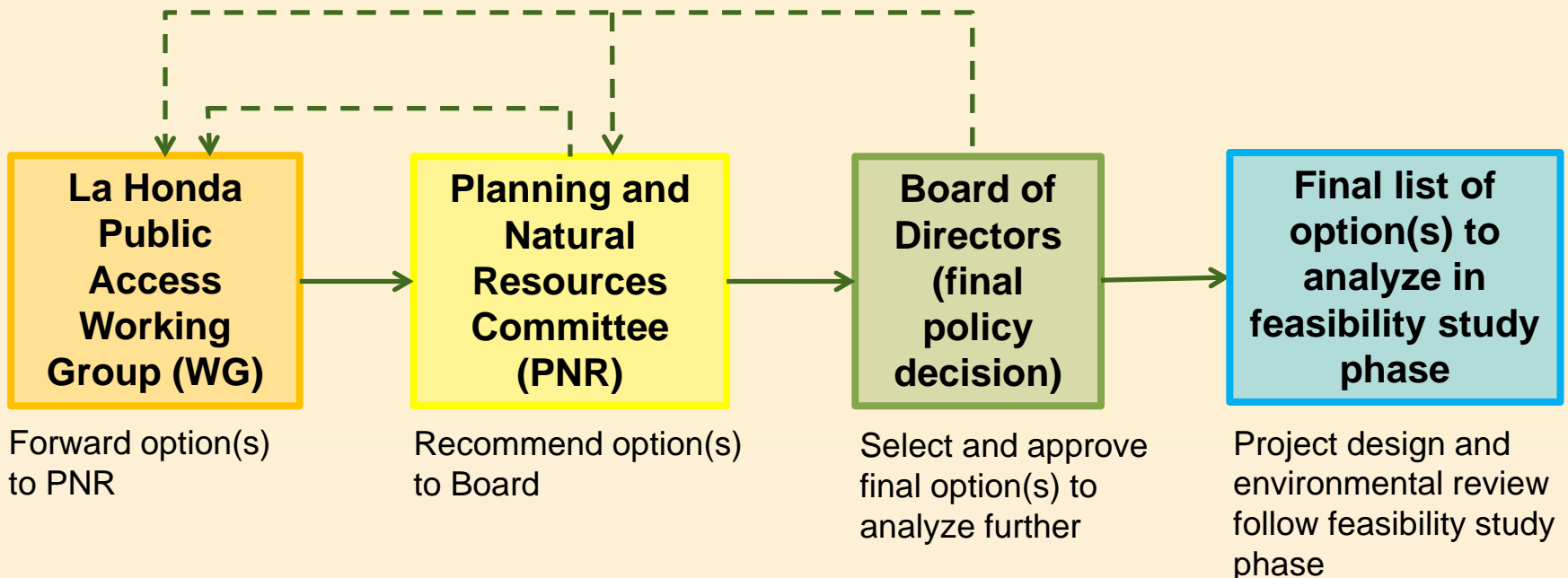
Date	Location	Task/Milestone
August 22, 2019		Kick off
September 12, 2019		Orientation and background
October 19, 2019		Site Tour #1
November 16, 2019		Site Tour #2 – PAWG-suggested sites
<b>December 12, 2019</b>	330 Distel Circle, Los Altos	Discussion of sites/options
<b>February 6, 2020</b>	La Honda Elementary School	Determination of sites/options to forward to PNR
<b>March 5, 2020</b> (tentative, if needed)	330 Distel Circle, Los Altos	Continuation of February meeting if needed
<b>April 21, 2020</b> (targeted)	La Honda Elementary School	Planning and Natural Resources Committee
<b>May 14, 2020</b> (tentative, if needed)	La Honda Elementary School	Respond to PNR feedback (if needed)
<b>June 16, 2020</b> (tentative, if needed)	TBD (school closed)	Planning and Natural Resources Committee (if needed)
<b>July or Aug 2020</b>	TBD (school closed)	Board Meeting (pending outcome of PNR meeting(s))



# Decision-Making Process

## PAWG Charge:

Work with the District project team to evaluate option(s) for potential to meet project goals and objectives and recommend option(s) for PNR and Board to forward into feasibility study phase



# Public Comment



# Thank you

