

From: [Tina Hugg](#)
To: [Tina Hugg](#); [Melissa Borgesi](#)
Subject: LHC PAWG - A Reed Email to Working Group
Date: Friday, October 18, 2019 9:28:47 AM
Attachments: [20180612_RedBarnSitePlan_R-18-64.pdf](#)

Dear Working Group:

Please see Andie Reed's email below that she asked be passed on to the group.

Responses to her questions follow:

- Lou Bordi is referring to his own proposals. The District has not suggested any proposals beyond what was shown for the Red Barn site on June 12, 2018.
- Yes, Event Center is on the tour tomorrow.
- The [meeting minutes for all Red Barn related meetings were provided as links](#) on September 12th. Here are links to the [May 9, 2018](#) and [June 12, 2018](#) meeting minutes. The links appear to work on this end, but let us know if they do not work for you.
- June 12, 2018 was the meeting when the Red Barn project and alternatives were put on hold and formation of a working group was proposed.

Thank you.

Tina Hugg, PLA, ASLA
Senior Planner
thugg@openspace.org
Midpeninsula Regional Open Space District
330 Distel Circle, Los Altos, CA 94022
P: (650) 691-1200 - F: (650) 691-0485
www.openspace.org | twitter: [@mrostd](#)

From: Andie Reed
Sent: Friday, October 18, 2019 9:03 AM
To: Tina Hugg <thugg@openspace.org>
Cc: Melissa Borgesi <mborgesi@openspace.org>
Subject: Re: LHC PAWG - L Bordi Letter to Working Group

EXTERNAL

Hi Tina and Melissa,

Can you pass this along to the working group? Thanks very much.

Thanks for passing along Lou's outline and photos. I'm looking forward to tomorrow's site visit. And thanks to Lou for sharing all his work. Are these actual proposals he is referring to, or is this Lou's method of

summarizing his thoughts?

I've spent time in the lower LHC area and the site, and up and down 84, and haven't yet found Driscoll event center, so Lou's photos are helpful. Might we see Driscoll tomorrow?

I studied the Alternatives that were presented spring of 2018, so I understand how strongly folks feel about retaining the Red Barn's natural state and also how 84 is very whizzy through this area, a combination that makes the Alternatives unattractive (my opinion).

I attach the 3 Alternatives presented last year, for anyone's use who hasn't seen them (e.g. those of us who weren't in on the original meetings), since they are often referred to. The links I'd received via email didn't open, so I found these by going onto to the Mid Pen website (as Tina and Melissa suggested) and clicking Board Meetings, and scrolling down to archives. These drawings are from the May 9, 2018 and June 12, 2018 meeting notes. Eventually, I would also like to read the minutes of the meeting where these are pushed aside in favor of having a working group start over with a year-long analysis and providing feedback, but I don't have that meeting date. Could you please provide?

I appreciate that Mid Pen listened to the neighbors and other public input and we have this opportunity to study further options. I am always struck by how the Red Barn shows up on the horizon as one makes that last turn in the road. Looking forward to getting out there tomorrow!

Thanks,
Andie

On Tue, Oct 15, 2019 at 9:12 AM Tina Hugg <thugg@openspace.org> wrote:

Dear Working Group,

Please find below an email from Lou Bordi who requested it be distributed to the Working Group ahead of the October 19th site tour.

This email will be posted online shortly with the materials that have been sent to the group last week.

Tina Hugg, PLA, ASLA

Senior Planner

thugg@openspace.org

Midpeninsula Regional Open Space District

330 Distel Circle, Los Altos, CA 94022

P: (650) 691-1200 - F: (650) 691-0485

www.openspace.org | twitter: [@mrosc](https://twitter.com/mrosc)

From: Lou Bordi

Sent: Monday, October 14, 2019 7:32 PM

To: Melissa Borgesi <mborgesi@openspace.org>; Tina Hugg <thugg@openspace.org>

Subject: Letter to Working Group

EXTERNAL

Hello Tina and Melissa,

I put together some information I'd like to share with the working group. Can you please distribute this to everyone before the next meeting on 10/19?

Thank you,

Lou

Hello Working Group and Staff,

I've made multiple trips to the three proposed locations for access/parking lots. I would like to share my findings, thoughts and opinions with you. I took people with with me for their input and opinions as well. I went with no time restraints or formal meeting so I could focus on the project itself. It would be great if as many people as possible could do the same. Not only do you see how beautiful it is but you really get a feel for the bigger picture. It also really helps to see the project first hand. Talking about it from the office fails miserably by comparison. I'm sure you will thoroughly enjoy it if you get a chance to go.

The board of directors voted unanimously (after public outcry to save the Red Barn in it's natural state and unsafe access concerns) to create a working group to explore all the possibilities for a safe access/parking lot for LaHonda Creek Preserve. The working group itself has an obligation to turn in our recommendation in the best interest of the public for a safe and rewarding experience.

Working group and staff, please bear with me if at times I get a little too serious, adamant about the details and the significance of the bigger picture. I've done these type of projects for a long time and have a real passion for it. I think it's a great opportunity for all of us to come up with a best possible recommendation

for a safe and fantastic user experience at the LaHonda Creek Preserve for all user groups.

I was impressed by how tame the cattle were at the Sears Ranch Road Access. It says a lot about the rancher's management practices. It's in cattle's nature to become on guard and uptight when they see a dog. Cattle do not distinguish the difference between a dog on a leash or off-leash.

What my priorities are based on for recommendation:

1. The safest access off Highway 84, period.
2. Keeping the preserve in its most natural state possible (minimal impact)
3. Being creative, working with the natural setting to achieve ultimate results.
4. Cosmetically appealing.
5. Achieve its intended purpose with minimum side effects.
6. Fantastic experience for all user groups (which all the above makes possible).

Sears Ranch Road Proposal #1

PROS:

1. Safest access of all locations off Highway 84 (some pruning recommended).
2. Longest sight plane off Highway 84. Zero construction necessary to exit Highway 84.
3. Only access off Highway 84 with a 35 MPH speed limit.
4. La Honda Public School is located on Sears Ranch Road. I have never heard of any problems with access.
5. Vast landscapes! You feel like you've gone somewhere remote and inspires you to explore.
6. Stunning views in all directions. You can see all the way to the coast, back to Skyline and all the beauty within the preserve itself.

7. The view of the two barns and large ponds are beautiful.
8. Being removed from the highway, you rarely hear man-made noise.
9. Great location for interpretive center and picnic area about 200 feet from parking lot (former ranch site).
10. Parking lot tucked out of sight.
11. Ranger residence on-site.
12. Existing road from Sears Ranch Road to parking lot (improvements needed).
13. Large existing flat spot for parking lot, with plenty of room for all user groups.
14. The most central located of all proposed sites (based on acreage and distance). See ownership and management conditions map given to us at 9/12/19 meeting. Proposed site is close to former residence.
15. New trails could leave parking lot in multiple directions.
16. Existing water and power on site.
17. You can enjoy the great views of the Red Barn from the pullout.

CONS:

I don't really see any cons to this site. It is such a beautiful site and offers so much for all user groups.

	This captures one of the remote feelings of Sea...
	One of the barns at Sears Ranch Road.JPG

Sears Ranch Road Proposal #2

PROS:

1. All access PROs are the same as Sears Ranch Road #1

2. The majority of PROs are the same as Sears Ranch Road #1

CONS:

It's not quite as magical as Sears Ranch Road #1

Red Barn Proposal

PROS:

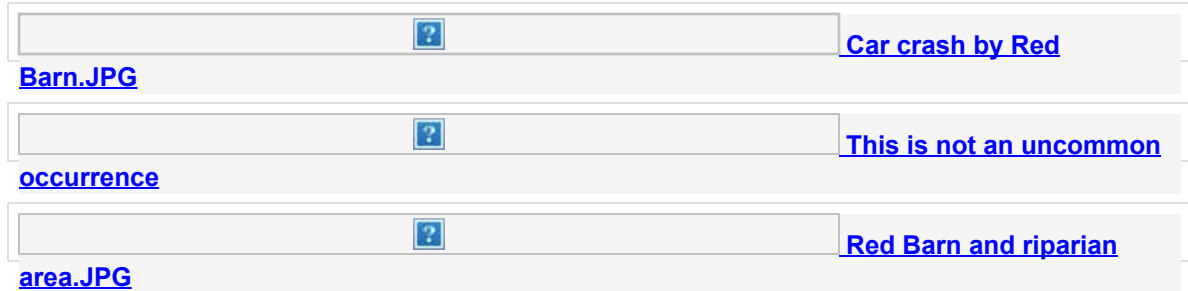
1. Iconic Red Barn and corrales.
2. Rich history of the Red Barn.
3. Has a nice place for interpretive center and picnic area.

CONS:

1. Unsafe access off Highway 84.
2. The proposed plan show large retaining walls and fill coming off Highway 84 and the paved road leading to the parking lot passes in front of the Red Barn. It looks very unnatural and not very attractive. This project would change the feel and visual appearance of the Red Barn location to say the least.
3. The old corrals will be removed to make way for the parking lot.
4. Due to the location right on the edge of Highway 84, users will be exposed to traffic and motorcycle noise. (Not an ideal environment for having a picnic or enjoying the interpretive center.)
5. Limited views.
6. The trail from the parking lot leads in only one direction.
7. Building the parking lot at the Red Barn would be a public relations disaster. After the last Red Barn meeting, the vast majority of the public left under the impression that the working group would look for alternative locations.
8. It's not the most central location.

9. The grass shown in the attached photo of the Red Barn is a riparian area. See page 47 of "La Honda Creek Open Space Preserve Master Plan".

This is what I found on my visit to the Red Barn on 9/28/19. After talking to some locals, this is not an uncommon occurrence. There is zero shoulder on Highway 84. (See attached image).



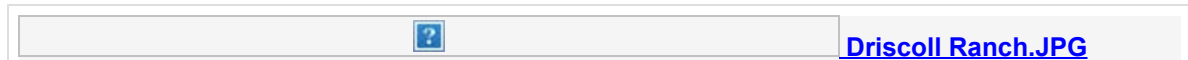
Driscoll Ranch Proposal

PROS:

1. Beautiful, forested back-drop.
2. The Driscoll Ranch Event Center is very large.
3. Offers great access to the lower portion of La Honda Creek.

CONS:

1. Needs improvement for safe access.
2. Heading west bound on Highway 84, making a left onto Driscoll, the sight plane is a little short.
3. Probably best suited as a secondary parking lot.



Email is not my favorite choice of communication by any means. I think we will be hard pressed for time at the site-meeting so I thought this would be best.

I appreciate your taking the time to read this.

Thank you,
Lou

ALTERNATIVE 1



ALTERNATIVE 2



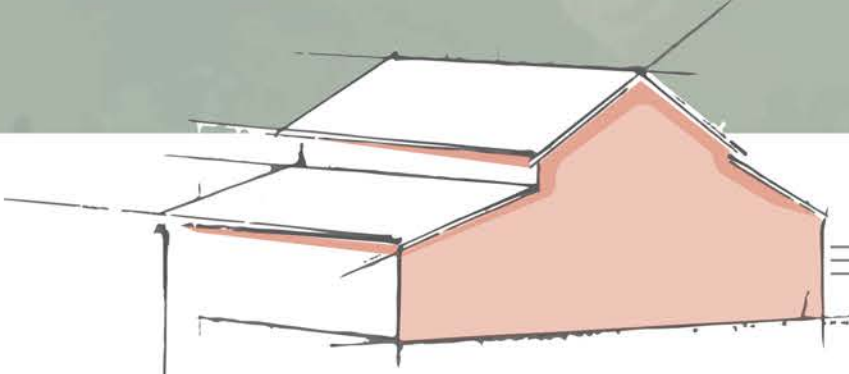
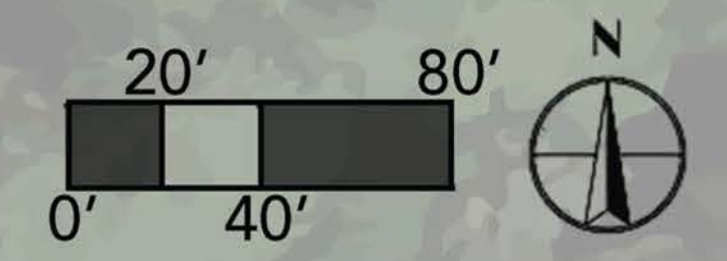
ALTERNATIVE 3 - PHASE 1

OVERVIEW

- 45 STANDARD SPACES
 - 4 ACCESSIBLE SPACES
 - 1 ACCESSIBLE VAN SPACE
-
- 50 TOTAL PASSENGER VEHICLE PARKING SPACES
-
- 10 MOTORCYCLE PARKING SPACES
 - 2 BUS PULL-OUT / PARKING SPACES



WEEKS CREEK



ALTERNATIVE 3 - PHASE 2 MODIFICATIONS



ALTERNATIVE 3 - PHASE 2

OVERVIEW

- 70 STANDARD SPACES
- 4 ACCESSIBLE SPACES
- 1 ACCESSIBLE VAN SPACE

- 75 TOTAL PASSENGER VEHICLE PARKING SPACES

- 10 MOTORCYCLE PARKING SPACES
- 2 BUS PULL-OUT / PARKING SPACES



RANGER HOUSE
VEGETATIVE SCREENING

EXISTING STRUCTURE
SPEED TABLE

ACCESSIBLE PATH CONNECTING TRAILHEAD AND BARN
RELOCATED INTERPRETIVE AREA
CENTRAL PICNIC AREA
(5) ADA PARKING SPACES
BICYCLE PARKING
RESTROOMS

(70) PASSENGER VEHICLE PARKING SPACES
BIOSWALE

AGRICULTURAL ACCESS ROAD
BARN PICNIC AREA

RED BARN BUFFER
RED BARN
18' FENCED CATTLE PATH TO PASTURE

SECONDARY ACCESS ROAD
(10) MOTORCYCLE PARKING

TRAILHEAD & STAGING AREA

(E) CULVERT
(E) DRAINAGE
RESTRICTED ACCESS SIGNAGE

(2) BUS PULL-OUT / PARKING

(E) DRAINAGE

VEGETATED RETAINING WALL
DRIVEWAY
ACCESS GATE
VEGETATED RETAINING WALL

ENTRY SIGNAGE

BIOSWALE

RELOCATED CATTLE CORRAL
WATER TROUGH

WEEKS CREEK

