



EL SERENO DOG ACCESS

A large, leafy tree with a thick trunk and many branches is the central focus of the image. The tree is set in a park-like environment with other trees and a dirt path. In the background, there are mountains under a clear blue sky. The text "Board Meeting November 9, 2016" is overlaid on the bottom right of the image in a white, sans-serif font.


Board Meeting
November 9, 2016


El Sereno Dog Access – Vision Plan Priority

- ✦ Included as a priority in the District's Vision Plan
- ✦ Measure AA #19: Dog Trails and Connections
- ✦ Involves opening trails at El Sereno Open Space Preserve to dog use

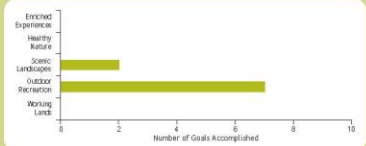
19
El Sereno:
Trails that allow Dog Access and Connections

Open trails to dogs. Connect to Skyline, Sanborn County Park, & Lexington Reservoir.






Goals Accomplished by This Action



Goal Category	Number of Goals Accomplished
Enhanced Experience	2
Healthy Nature	0
Scenic Landscapes	0
Outdoor Recreation	7
Working Lands	0



Top
25

Midpen Vision Plan | Chapter 5: Priority Action Profiles | Page 92



Proposed Expansion of Dog Access at El Sereno





General Manager's Recommendations

- Approve the proposed project description for the El Sereno Dog Access Project, as set out in the board report, to proceed with the required environmental review in accordance with the California Environmental Quality Act.
- Approve the above project description for a future Use and Management Plan Amendment for El Sereno Open Space Preserve, excluding trail segment over San Jose Water Company Property, pending formalized access rights.



Discussion Topics

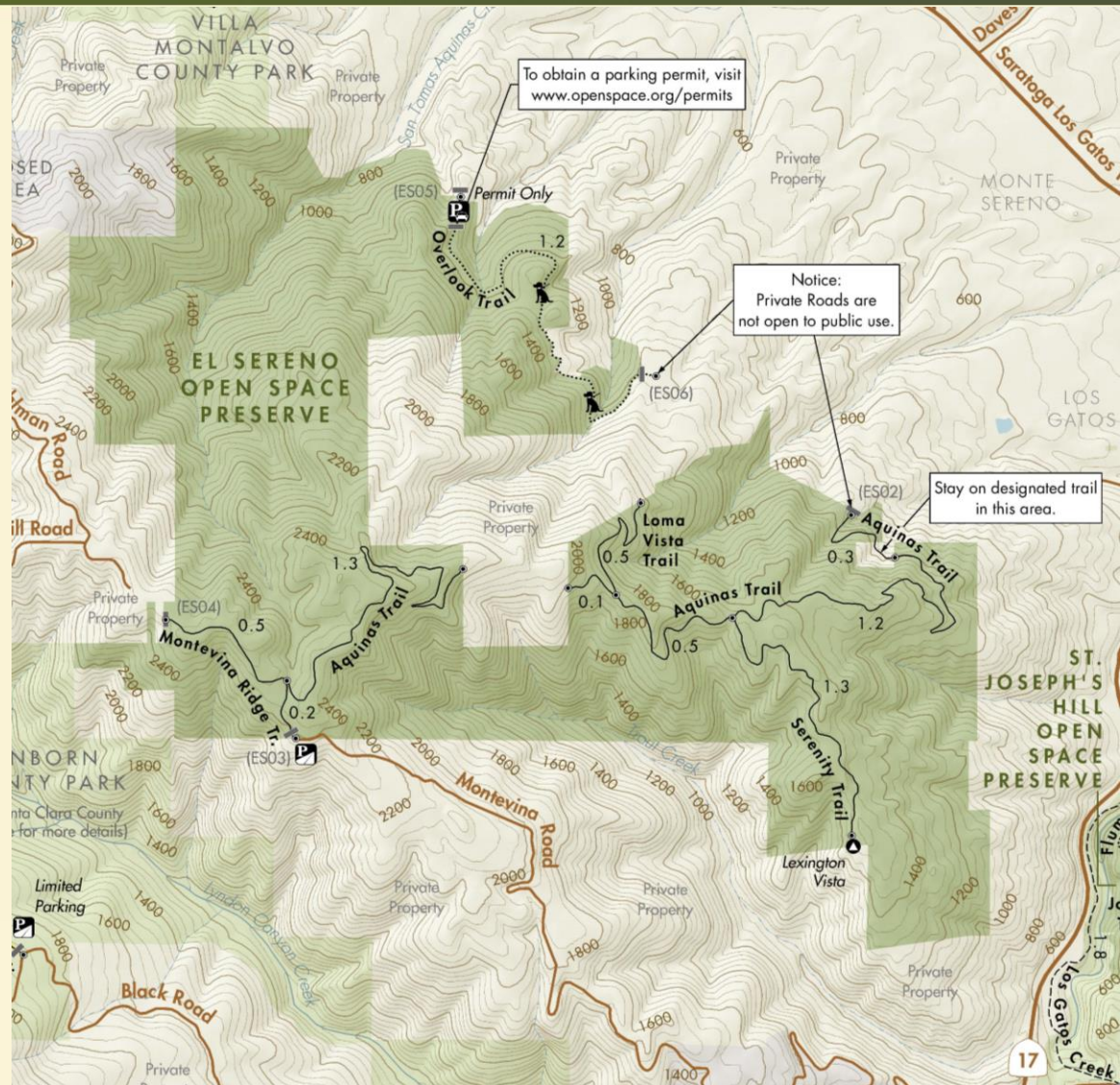
- Preserve Overview
- Current Dog Access Opportunities
- District Dog Ordinances
- Dog Access Evaluation Criteria
- Proposed Dog Access Expansion
- Neighborhood & PNR Committee Meeting Feedback

El Sereno Overview

- 🌿 **History of trail uses**
 - Hiking, equestrian, bicycling

- 🌿 **Overlook Trail and dogs**
 - Formalized public access in 2008

- 🌿 **Limited amenities and parking**
 - No water, restrooms or trash





Current Dog Access Opportunities on District Preserves

🌿 Full Access

- Coal Creek
- Foothills
- Fremont Older
- Pulgas Ridge
- Thornewood
- St. Joseph's Hill
- El Sereno (proposed)

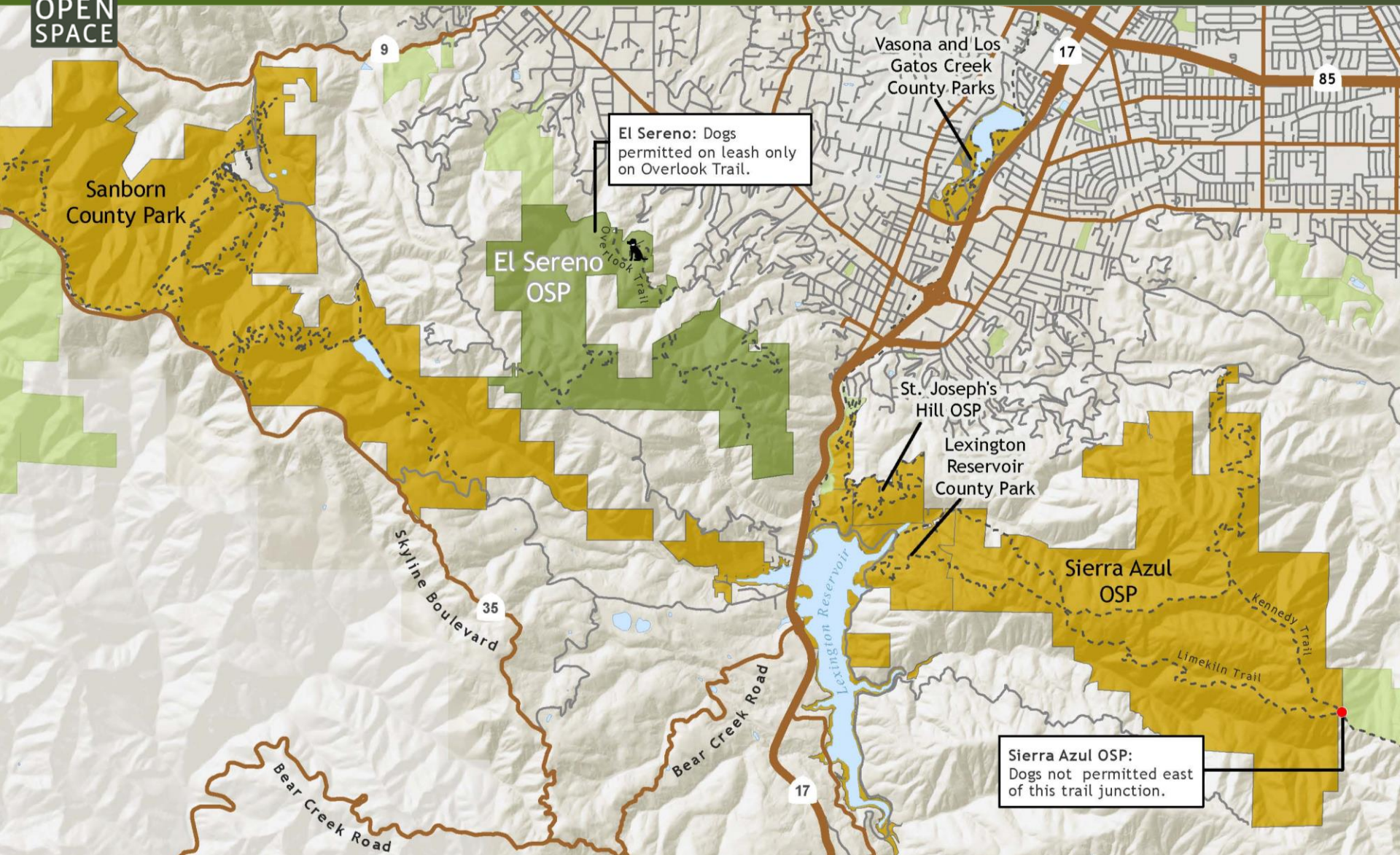
🌿 Limited Access

- Long Ridge
- El Sereno
- Windy Hill
- Sierra Azul





Regional Opportunities for Dog Access



Existing Ordinances Regarding Dog Use

- Three dogs per person
- Leashes required
- Dogs must stay out of water areas
- Dogs must not disturb or chase wildlife
- Dog excrement must be removed





Evaluation of Dog Access at El Sereno

Criterion	Supports Dog Access	Notes
Habitat sensitivity	Y	Chaparral; Low sensitivity
Preserve use levels	Y	Low use
Trail-width/visibility	Y	Wide fire roads
Parking	N	Very limited
Conflicting special use	Y	No special use zone
History of dog use	N	Not previously sanctioned
Adjacent to Urban Area	Y	Limited
Miles of trails	Y	7.1 miles
Disturbed habitat	Y	Historical agricultural use
Dogs allowed on connecting trails	N/A	No regional trail connections
Loop trails	N	No loop trails

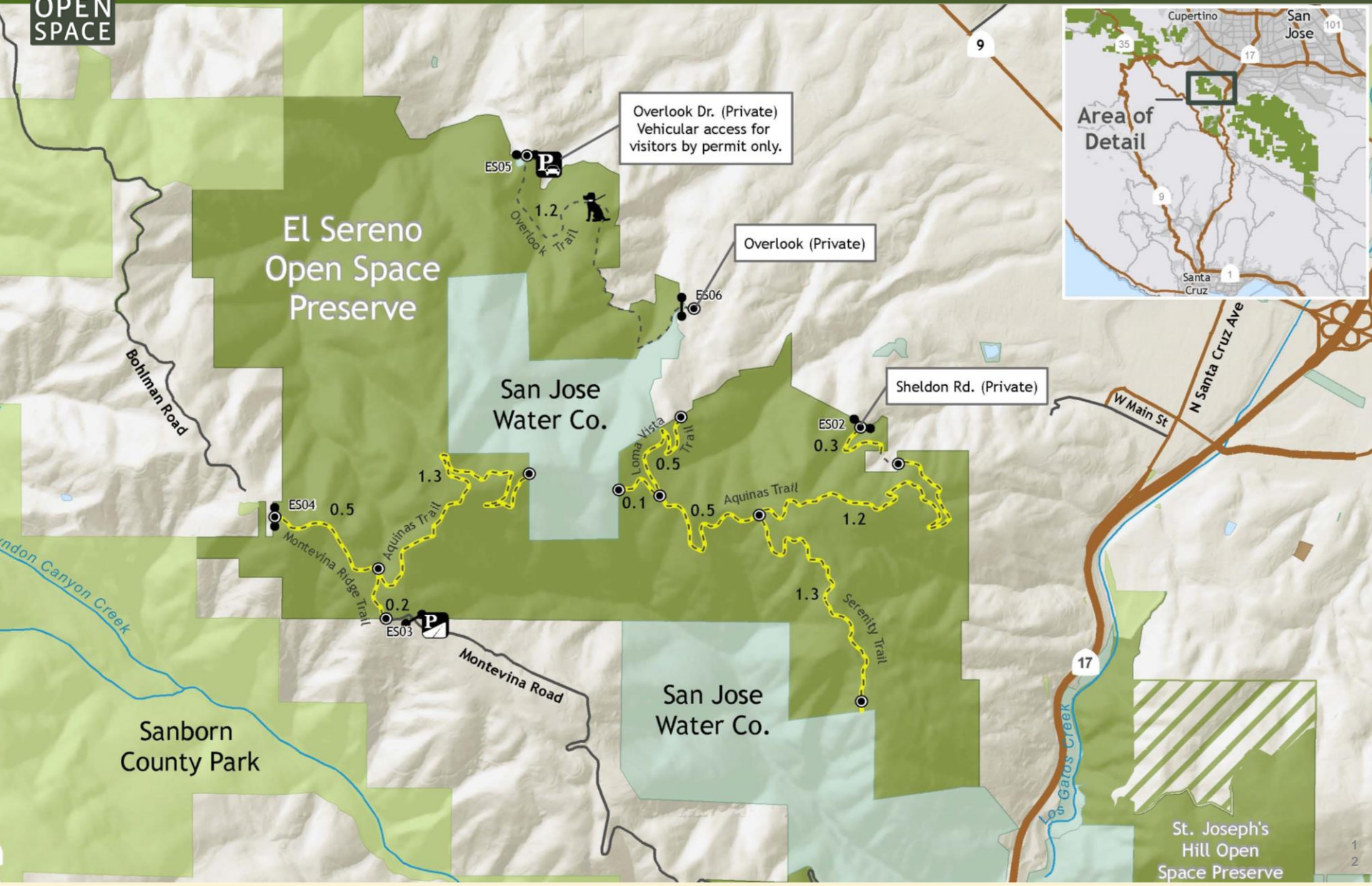


Proposed Dog Access Expansion

- Expand dog access to all trails except for San Jose Water Company property
- Standard District dog regulations apply
- Maintain general public access through Montevina Road and Overlook Drive



Proposed Dog Access



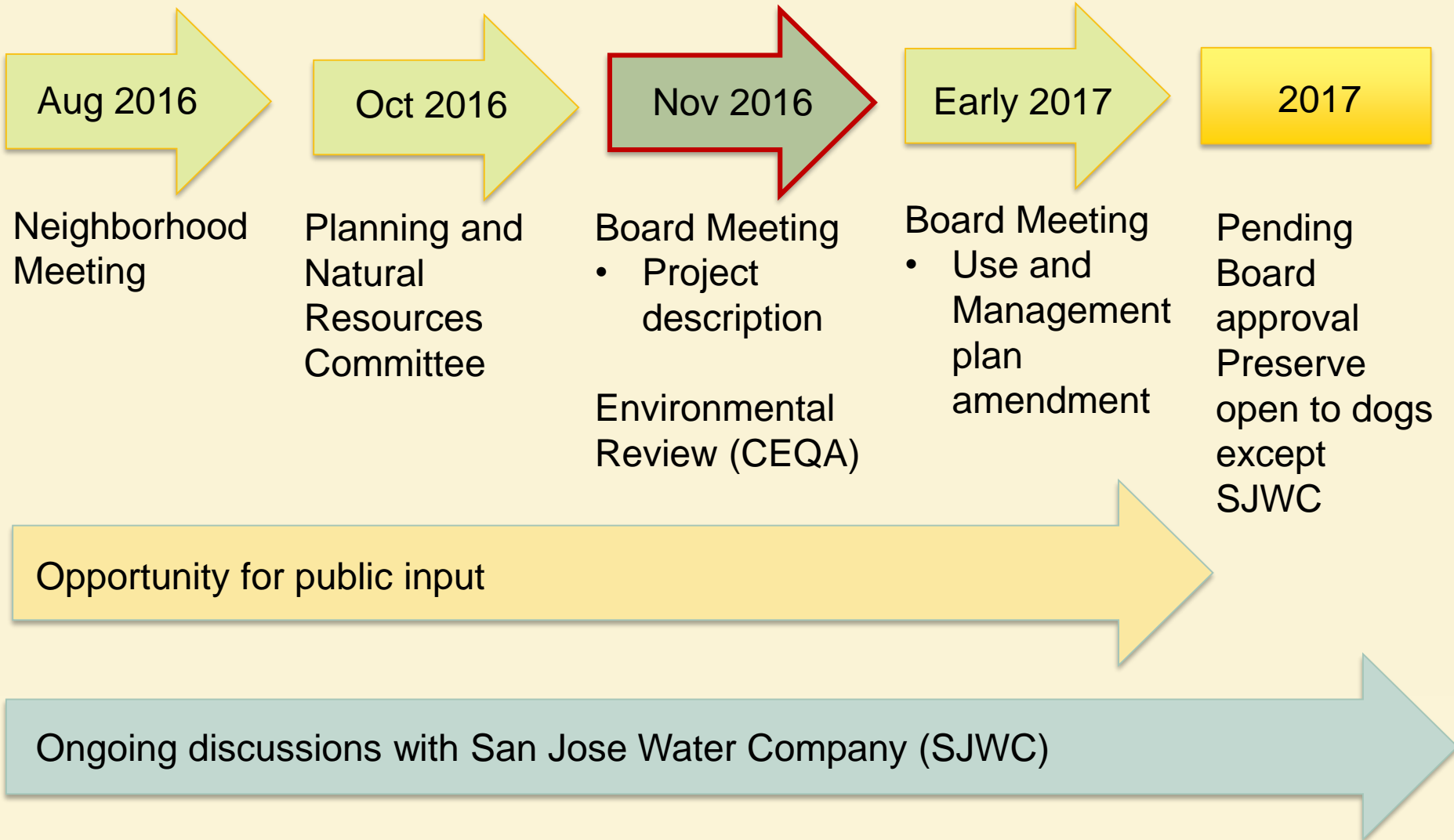


Feedback from Neighborhood and PNR Meetings

- Support for dog access
- Current parking issues on private roads
- Need for improved signage
- Additional District ranger patrol and enforcement of regulations to ensure compliance
- Feasibility of additional parking area(s) within the Preserve



Planning Process and Schedule





General Manager's Recommendations

- Approve the proposed project description for the El Sereno Dog Access Project, as set out in the board report, to proceed with the required environmental review in accordance with the California Environmental Quality Act.
- Approve the above project description for a future Use and Management Plan Amendment for El Sereno Open Space Preserve, excluding trail segment over San Jose Water Company Property, pending formalized access rights.



Questions

