



Midpeninsula Regional  
Open Space District

R-15-73  
Meeting 15-13  
May 13, 2015

## AGENDA ITEM 8

### AGENDA ITEM

Resolution of Support Endorsing Six Priority Conservation Areas in San Mateo County and Nine Priority Conservation Areas in Santa Clara County nominated by the Midpeninsula Regional Open Space District; and a Resolution of Support for Two Priority Conservation Areas Nominated by the California State Coastal Conservancy and a Resolution of Support for One Priority Conservation Area Nominated by the City of Menlo Park

### GENERAL MANAGER'S RECOMMENDATIONS

A handwritten signature in black ink, appearing to be "S. G. G.", written over the printed text of the section header.

1. Adopt a resolution of support endorsing the nomination of six (6) Priority Conservation Areas in San Mateo County and nine (9) Priority Conservation Areas in Santa Clara County, as well as the PCA designation categories selected for the existing and new Priority Conservation Areas.
2. Adopt resolutions of support for the nomination of the following Priority Conservation Areas by other agencies: 1) the Menlo Park and East Palo Alto Baylands, which includes Ravenswood Open Space Preserve, nominated by the City of Menlo Park and 2) the corridors for the California Coastal Trail and San Francisco Bay Area Water Trail nominated by the California State Coastal Conservancy.

### SUMMARY

At its January 14, 2015 meeting, the District Board of Directors (Board) received an informational presentation on the ABAG's Priority Conservation Area (PCA) program (R-15-02). Since then, District staff has coordinated and collaborated extensively with multiple jurisdictions, agencies, and partners to seek input on and further refine the District's proposed nomination of six (6) PCAs in San Mateo County and nine (9) PCAs in Santa Clara County. Staff has also identified which PCA categories to assign to the five existing PCAs that were nominated during the first round of PCA nominations in 2007. The PCA application, which is due by May 30, requires a Board-adopted resolution for the PCA nominations and categories. In addition, the District has been asked for resolutions of support for three separate PCAs being nominated by the California State Coastal Conservancy (Coastal Conservancy) and the City of Menlo Park.

**DISCUSSION**

The PCA program is a voluntary program for local jurisdictions, which includes Counties, Cities and Open Space Special Districts, to contribute to a list and mapping of regionally significant open space areas that have evidence-based conservation, restoration, and/or recreation value. ABAG is administering this 2014-15 PCA program as the second round of PCA nominations following the initial PCA program in 2007-08. Specific projects within PCAs would potentially be eligible and/or better positioned for future funding. If approved by the Board, approximately 95% of District lands will be within a Priority Conservation Area.

An important consideration for the District is that future funding sources may favor PCA designations. For example, the first PCA grant program that was piloted in 2013 required that all projects be located within a designated PCA. Discussions regarding the next round of the PCA grant program are anticipated to begin this summer as the 2015 update to Plan Bay Area begins. It is possible that other grant funding sources, such as the highly anticipated new Proposition 1 grant program, could consider including a PCA designation as an evaluation criterion.

**General Approach for new PCA nominations**

The General Manager is proposing new PCAs that would:

- Integrate with the 2008-adopted PCAs, where new PCAs would promote contiguous open space/parklands and regional trail connectivity and close remaining gaps;
- Focus on priority conservation areas as identified by the District’s Vision Plan; and
- Reflect areas of high importance to biodiversity, water quality and supply, agriculture, community health, regional recreation, and climate change resiliency; and receive broad consensus and support from local jurisdictions and partner agencies.

**Outreach**

The 2014-15 PCA program requires nominating agencies to outreach to affected local jurisdictions. Since the fall of 2014, District staff has been coordinating extensively with a wide range of partners and jurisdictions to receive input and garner support on the proposed PCAs (Table 1).

<b>Table 1. Outreach to Jurisdictions, Agencies, and Partners</b>	
<ol style="list-style-type: none"> <li>1. County of Santa Clara                             <ol style="list-style-type: none"> <li>a. Parks and Recreation Department</li> <li>b. Planning Department</li> </ol> </li> <li>2. County of San Mateo                             <ol style="list-style-type: none"> <li>a. Parks and Recreation Department</li> <li>b. Planning Department</li> <li>c. Farm Bureau</li> <li>d. Agricultural Advisory Committee</li> <li>e. Pescadero Municipal Advisory Council</li> <li>f. Parks Commission</li> <li>g. Planning Commission</li> <li>h. Board of Supervisors</li> </ol> </li> <li>3. City of Cupertino</li> <li>4. Town of Los Altos Hills</li> <li>5. Town of Los Gatos</li> <li>6. City of Menlo Park</li> <li>7. City of Palo Alto</li> </ol>	<ol style="list-style-type: none"> <li>8. Town of Portola Valley                             <ol style="list-style-type: none"> <li>a. Planning Commission</li> <li>b. Town Council</li> </ol> </li> <li>9. City of San Jose</li> <li>10. City of Saratoga</li> <li>11. Town of Woodside                             <ol style="list-style-type: none"> <li>a. Open Space Committee</li> <li>b. Town Council</li> </ol> </li> <li>12. Santa Clara County/Cities Managers’ Association</li> <li>13. San Mateo County City Managers’ Association</li> <li>14. Santa Clara Valley Water District</li> <li>15. Peninsula Open Space Trust</li> <li>16. Hidden Villa</li> <li>17. The Nature Conservancy</li> <li>18. Bay Area Ridge Trail</li> <li>19. Greenbelt Alliance</li> </ol>

In January, the District sent written notification letters and maps to the affected jurisdictions to provide the required 90 days for their staff and elected bodies to formally consider or comment on the nominations, where the comment period ended on May 1, 2015. The very early consultation and ongoing collaboration has resulted in productive discussions and broad consensus and support for the nominations, including multiple resolutions and letters of support that will be included in the District’s application.

**Proposed PCAs in San Mateo County**

In San Mateo County, the District is nominating six PCAs (Attachment 5) for which the General Manager is recommending that the Board adopt a resolution of support. These six PCAs include District-owned lands at eleven preserves: Miramontes Ridge, Purisima Creek Redwoods, El Corte de Madera Creek, Tunitas Creek, La Honda Creek, Teague Hill, Windy Hill, Coal Creek, Russian Ridge, Skyline Ridge, and Long Ridge Open Space Preserves. In addition, San Mateo County Parks requested that Huddart and Wunderlich County Parks be included as part of the District’s proposed Teague Hill PCA (SM3) due to their adjacency and future partnership opportunities to help implement the Master Plan for Huddart and Wunderlich County Parks.

Map Key	Proposed PCAs	Open Space Preserves	Affected Jurisdictions	Vision Plan Priority #s	Proposed Categories
SM1	Miramontes	Miramontes Ridge	County of San Mateo	1, 27 & 28	Regional Recreation, Natural Landscapes, Agricultural Lands
SM2	North Skyline	Purisima and El Corte de Madera Creek	County of San Mateo	3, 4 & 33	Regional Recreation, Natural Landscapes
SM3	Teague Hill	Teague Hill	County of San Mateo/ Woodside	34	Regional Recreation, Natural Landscapes
SM4	Southern San Mateo Coast	Tunitas Creek & La Honda	County of San Mateo	7, 13, 14, 32, 39, 42, 43, 44 & 48	Regional Recreation, Natural Landscapes, Agricultural Lands
SM5	Windy Hill	Windy Hill & Coal Creek	County of San Mateo/ Portola Valley	6, 8, 10 & 40	Regional Recreation, Natural Landscapes
SM6	South Skyline	Russian Ridge, Skyline Ridge, and Long Ridge	County of San Mateo	15, 16 & 46	Regional Recreation, Natural Landscapes

Deleted: , Agricultural Lands

**Proposed PCAs in Santa Clara County**

In Santa Clara County, the District is nominating nine PCAs (Attachment 6) for which the General Manager is recommending that the Board adopt a resolution of support. These nine PCAs include District-owned lands at seven preserves: Los Trancos, Monte Bello, Rancho San Antonio, El Sereno, Sierra Azul, St. Joseph’s Hill, and Bear Creek Redwoods Open Space Preserves. In addition, Santa Clara County Parks requested that Rancho San Antonio, Stevens Creek, Sanbom-Skyline, and Lexington Reservoir County Parks be included as part of the District’s proposed PCAs (SC3, SC4, SC5, SC6 and SC8), since the County was not nominating PCAs in this round. The Town of Los Gatos requested that their Novitiate Park be included as part of the District’s proposed PCA for El Sereno/Sierra Azul (SC7).

Map Key	Proposed PCAs	Open Space Preserves	Affected Jurisdictions	Vision Plan Priority #s	Proposed Categories
SC1	Palo Alto Open Space	Los Trancos and Monte Bello	Palo Alto	47	Regional Recreation, Natural Landscapes
SC2	Hidden Villa / Rancho San Antonio	Rancho San Antonio	Los Altos Hills	11 & 41	Regional Recreation, Natural Landscapes, Agricultural Lands
SC3	Southeast Rancho San Antonio	Rancho San Antonio	County of Santa Clara	N/A	Regional Recreation, Natural Landscapes
SC4	Cupertino Open Space	Rancho San Antonio	Cupertino	11	Regional Recreation, Natural Landscapes
SC5	Stevens Creek	Monte Bello	County of Santa Clara	17 & 47	Regional Recreation, Natural Landscapes
SC6	Saratoga-to-the-Sea	N/A	Saratoga	18	Regional Recreation, Natural Landscapes
SC7	El Sereno / Sierra Azul	El Sereno, St. Joseph's Hill, and Sierra Azul	Los Gatos	19, 24, & 53	Regional Recreation, Natural Landscapes
SC8	Critical Wildlife Linkage	El Sereno, Bear Creek Redwoods, and Sierra Azul	County of Santa Clara	19, 20, 21, 22, 23,25 & 54	Regional Recreation, Natural Landscapes
SC9	Eastern Sierra Azul	Sierra Azul	San Jose	24	Regional Recreation, Natural Landscapes

#### Proposed Categories for Existing and New PCAs

The 2014-15 PCA program is also requiring nominating agencies to identify categories for each new PCA and for existing PCA that was nominated in 2007-08 (Attachment 7). These applicable categories are as follows:

1. **Natural Landscapes** – Areas critical to the functioning of wildlife and plant habitats, aquatic ecosystems and the region's water supply and quality.
2. **Agricultural Lands** – Farmland, grazing land, and timberland that support the region's agricultural economy and provide additional benefits such as habitat protection and carbon sequestration.
3. **Urban Greening** – Existing and potential green spaces in cities that increase habitat connectivity, improve community health, capture carbon emissions, and address stormwater.
4. **Regional Recreation** – Existing and potential regional parks, trails, and other publicly accessible recreation facilities.

The District has four existing PCAs and the Peninsula Open Space Trust has one existing PCA for the Lobitos Ridge Corridor. The General Manager recommends assigning the following proposed categories as listed below. The District has consulted with POST on the proposed categories for their Lobitos Ridge Corridor, and POST supports these categories.

Existing PCAs (2007-08)	Proposed Categories
Gateway to the San Mateo County Coast	Regional Recreation, Natural Landscapes, Agricultural Lands
Upper San Gregorio Creek Headwaters	Regional Recreation, Natural Landscapes, Agricultural Lands
Upper Stevens Creek Watershed Area	Regional Recreation, Natural Landscapes, Agricultural Lands
Upper Los Gatos Creek Watershed	Regional Recreation, Natural Landscapes
Lobitos Ridge Corridor (originally nominated by POST)	Regional Recreation, Natural Landscapes, Agricultural Lands (supported by POST)

**Support for Other Nominating Agency PCAs**

Three PCAs are being nominated by other lead agencies within the District’s jurisdiction for which the General Manager is recommending that the Board adopt resolutions of support. These include:

- 1) The Menlo Park and East Palo Alto Baylands. The City of Menlo Park intends to nominate a PCA in partnership with the City of East Palo Alto and the District for an area that will extend along the baylands of both cities and include Ravenswood Open Space Preserve (Attachment 8). The City of Menlo Park has coordinated extensively with affected agencies, jurisdictions, and property owners in the immediate area, including the City of East Palo Alto, the City of San Jose, San Francisco Public Utility Commission, and the San Francisquito Creek Joint Powers Authority. They are seeking a resolution of support from the District for their nominated PCA, which would be designated with the Regional Recreation, Natural Landscapes, and Urban Greening categories. The General Manager recommends supporting the City of Menlo Park’s nomination for the Menlo Park and East Palo Alto Baylands PCA.
  
- 2) Corridors for the Coastal Trail and San Francisco Bay Area Water Trail. The Coastal Conservancy (Conservancy) intends to nominate the Coastal Trail as a PCA in the Regional Recreation category (Attachment 9). It is a network of public trails extending along the 1,200-mile California coastline. This designation would be similar to the existing PCAs that include the San Francisco Bay Trail and the Bay Area Ridge Trail, which both received funding from the 2013 PCA grant program. The Conservancy is working with the Counties of San Mateo, San Francisco, Marin, and Sonoma on resolutions by the boards of supervisors supporting the nomination of the Coastal Trail. The District has also been approached for a resolution of support, and the General Manager recommends supporting the Conservancy on this PCA nomination. The District’s support of the Coastal Trail PCA would not commit the District to long-term maintenance or management of the Coastal Trail.

The Conservancy also intends to nominate the San Francisco Bay Area Water Trail (Water Trail) as a PCA in the Regional Recreation category (Attachment 10). The Conservancy has notified the District of this proposed Water Trail PCA due to the shoreline lands at Ravenswood Open Space Preserve and Cooley Landing, where no designated Water Trail

sites have yet been identified. The General Manager recommends supporting the Conservancy on this PCA nomination. The District's support of the Water Trail PCA would not commit the District to long-term maintenance or management of the Water Trail.

**FISCAL IMPACT**

Nominations may in the future help leverage outside grant funds.

**BOARD COMMITTEE REVIEW**

This item was presented to the full Board as an informational item on January 14, 2015.

**PUBLIC NOTICE**

Public notice was provided as required by the Brown Act.

**CEQA COMPLIANCE**

This action is not a project under the California Environmental Quality Act (CEQA), and no CEQA analysis is therefore required.

**NEXT STEPS**

With Board adoption, staff will submit an application for the nominated PCAs to ABAG at the end of May to meet ABAG's May 30 deadline.

Attachments

1. Resolution of Support for the District's nomination of 15 PCAs in San Mateo and Santa Clara Counties
2. Resolution of Support for the City of Menlo Park's Menlo Park and East Palo Alto Baylands PCA
3. Resolution of Support for the California State Coastal Conservancy's Coastal Trail PCA
4. Resolution of Support for the California State Coastal Conservancy's San Francisco Bay Area Water Trail PCA
5. Map of Proposed New Priority Conservation Areas in San Mateo County (2014-15)
6. Map of Proposed New Priority Conservation Areas in Santa Clara County (2014-15)
7. Map of Existing Priority Conservation Areas (2007-08)
8. Map of Menlo Park and East Palo Alto Baylands PCA
9. Map of Coastal Trail PCA (provided by California State Coastal Conservancy)
10. Map of San Francisco Bay Area Water Trail PCA (provided by California State Coastal Conservancy)

Responsible Department Head:  
Jane Mark, AICP, Planning Manager

Graphics prepared by:  
Casey Hiatt, GIS Administrator  
Michele Childs, GIS Technician

Prepared by:  
Tina Hugg, Senior Planner  
Jane Mark, AICP, Planning Manager  
Casey Hiatt, GIS Administrator

**RESOLUTION NO. 15-\_\_**

**A RESOLUTION OF THE BOARD OF DIRECTORS OF  
THE MIDPENINSULA REGIONAL OPEN SPACE DISTRICT  
ENDORING NOMINATIONS OF PRIORITY CONSERVATION AREAS  
IN SAN MATEO AND SANTA CLARA COUNTIES AND THE  
PROPOSED CATEGORIES TO ASSIGN TO THE PRIORITY  
CONSERVATION AREAS**

---

**WHEREAS**, the Association of Bay Area Governments (ABAG) has established Priority Conservation Areas (PCAs) as an integral part of the Plan Bay Area multi-agency regional planning initiative; and

**WHEREAS**, in 2007, ABAG requested nominations from local governments and land conservation organizations for Priority Conservation Areas (PCAs) pursuant to the “Focusing our Vision” (FOCUS) program, a multi-agency regional planning initiative; and

**WHEREAS**, in August 2007, the Midpeninsula Regional Open Space District (District) nominated four PCAs as part of the FOCUS program and submitted applications for the Gateway to the San Mateo County Coast, Upper San Gregorio Creek Headwaters, Upper Stevens Creek Watershed Area, and Upper Los Gatos Creek Watershed PCAs in San Mateo and Santa Clara Counties; and

**WHEREAS**, in August 2007, in addition to the District’s nomination, the Peninsula Open Space Trust (POST) and District jointly submitted a nomination for the Lobitos Ridge Corridor PCA in San Mateo County; and

**WHEREAS**, PCAs are intended to be areas which contain important agricultural, natural resource, watershed, historic, scenic, cultural, recreational, and/or ecological values and ecosystem functions deserving of conservation funding; and

**WHEREAS**, PCA designations will provide enhanced grant opportunities for long-term conservation activities and improvements to designated open space areas; and

**WHEREAS**, the five PCAs that were nominated in 2007 by the District and POST, and subsequently approved by ABAG, are mutually compatible and complementary, and represent a diverse and balanced mix of conservation priorities in San Mateo and Santa Clara Counties; and

**WHEREAS**, in July 2014, ABAG adopted updates and revisions to the PCA program and a new application process for public agencies and open space districts to nominate new PCAs, and requested nominations from local governments and special districts for new PCAs; and

**WHEREAS**, in December 2014, ABAG undertook a confirmation process for the existing PCAs that ABAG approved in 2008, notified local jurisdictions of the existing PCAs that the District and POST nominated in 2007, and received no objections to the District’s and POST’s existing PCAs during this 90-day comment period; and



**WHEREAS**, on January 14, 2015, the District's Board of Directors received an informational presentation on the PCA program and an overview of the 15 proposed PCAs in San Mateo and Santa Clara Counties prior to the District notifying the affected local jurisdictions as part of the District's PCA outreach; and

**WHEREAS**, on January 29, 2015, the District issued a notification letter to the Counties of San Mateo and Santa Clara and eight cities regarding the proposed PCA within their jurisdictions; and the District received no objections to the nominations at the conclusion of the 90-day notification period that ended on May 1, 2015; and

**WHEREAS**, between February and May 2015, the District conducted extensive outreach to public agency staff, elected officials and partner organizations on the proposed PCAs, and received Resolutions of Support from the Towns of Los Gatos, Portola Valley and Woodside, and letters of support from POST, Greenbelt Alliance and the City of Saratoga for the District's nominations; and

**WHEREAS**, within San Mateo County, the District met with the San Mateo County Planning Office and Parks Department, and presented the proposed PCAs to the San Mateo County Farm Bureau, Agricultural Advisory Committee, Pescadero Municipal Advisory Council and County Parks Commission as part of the PCA outreach prior to seeking support from by the County Planning Commission and Board of Supervisors; and

**WHEREAS**, within Santa Clara County, the District met with the Santa Clara County Planning Office and Parks Department, where the Planning Office informed the County Board of Supervisors of the District's and other agencies' proposed PCAs, and the District met with and received broad consensus from the Santa Clara Valley Water District, Hidden Villa and other partners on the proposed PCAs; and

**WHEREAS**, as part of this 2014-2015 PCA application process, ABAG is seeking recommendations for assigning categories to the existing PCAs that the District and POST nominated in 2007, and the District is recommending Regional Recreation, Natural Landscapes and Agricultural Lands categories for the District's existing PCAs for Gateway to the San Mateo County Coast, Upper San Gregorio Creek Headwaters, Upper Stevens Creek Watershed Area, and [the District is recommending Regional Recreation and Natural Landscapes categories for the District's existing PCA](#) Upper Los Gatos Creek Watershed, and POST concurs with the District's recommendations for Regional Recreation, Natural Landscapes and Agricultural Lands categories for POST's Lobitos Ridge Corridor PCA; and

**WHEREAS**, the Board finds that nominating these PCAs is not a project under CEQA.

**NOW, THEREFORE, BE IT RESOLVED** by the Board of Directors of the Midpeninsula Regional Open Space District as follows:

1. The Board hereby endorses the District's nominations for 15 Priority Conservation Areas and their assigned categories, listed below and described in Exhibits A and B, which are attached hereto and incorporated herein by this reference:
  - SM1: Miramontes: Regional Recreation, Natural Landscapes, and Agricultural Lands
  - SM2: North Skyline: Regional Recreation and Natural Landscapes



- SM3: Teague Hill: Regional Recreation and Natural Landscapes
- SM4: Southern San Mateo Coast: Regional Recreation, Natural Landscapes, and Agricultural Lands
- SM5: Windy Hill: Regional Recreation, and Natural Landscapes
- SM6: South Skyline: Regional Recreation and Natural Landscapes
- SC1: Palo Alto Open Space: Regional Recreation and Natural Landscapes
- SC2: Hidden Villa/Rancho San Antonio: Regional Recreation, Natural Landscape and Agricultural Lands
- SC3: Southeast Rancho San Antonio: Regional Recreation and Natural Landscapes
- SC4: Cupertino Open Space: Regional Recreation and Natural Landscapes
- SC5: Stevens Creek: Regional Recreation and Natural Landscapes
- SC6: Saratoga-to-Sea: Regional Recreation and Natural Landscapes
- SC7: El Sereno/Sierra Azul: Regional Recreation and Natural Landscapes
- SC8: Critical Wildlife Linkage: Regional Recreation and Natural Landscapes
- SC9: Eastern Sierra Azul: Regional Recreation and Natural Landscapes

Deleted: and

Deleted: , and Agricultural Lands

2. The Board hereby endorses the assigned categories for the District and POST's five existing Priority Conservation Areas as listed below:

- Gateway to the San Mateo County Coast: Regional Recreation, Natural Landscapes and Agricultural Lands
- Upper San Gregorio Creek Headwaters: Regional Recreation, Natural Landscapes and Agricultural Lands
- Upper Stevens Creek Watershed Area: Regional Recreation, Natural Landscapes and Agricultural Lands
- Upper Los Gatos Creek Watershed: Regional Recreation, and Natural Landscapes
- Lobitos Ridge Corridor: Regional Recreation, Natural Landscapes and Agricultural Lands

Deleted: ,

Deleted: and Agricultural Lands

3. The General Manager and General Counsel are authorized to execute any and all other documents necessary or appropriate to submit an application for the nominated Priority Conservation Areas to the Association of Bay Area Governments.

\*\*\*\*\*

**PASSED AND ADOPTED** by the Board of Directors of the Midpeninsula Regional Open Space District on the 13<sup>th</sup> of May 2015, at a Regular Meeting thereof, by the following vote:

- AYES:**
- NOES:**
- ABSTAIN:**
- ABSENT:**

**ATTEST:**

**APPROVED:**

\_\_\_\_\_  
Secretary  
Board of Directors

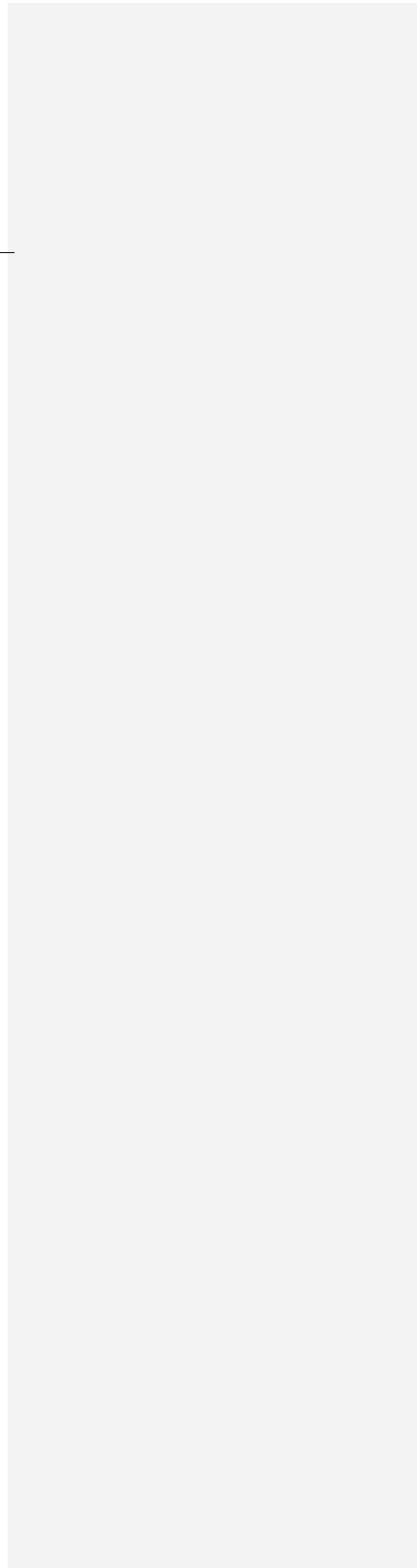
\_\_\_\_\_  
Pete Siemens, President  
Board of Directors

**APPROVED AS TO FORM:**

\_\_\_\_\_  
General Counsel

I, the Interim District Clerk of the Midpeninsula Regional Open Space District, hereby certify that the above is a true and correct copy of a resolution duly adopted by the Board of Directors of the Midpeninsula Regional Open Space District by the above vote at a meeting thereof duly held and called on the above day.

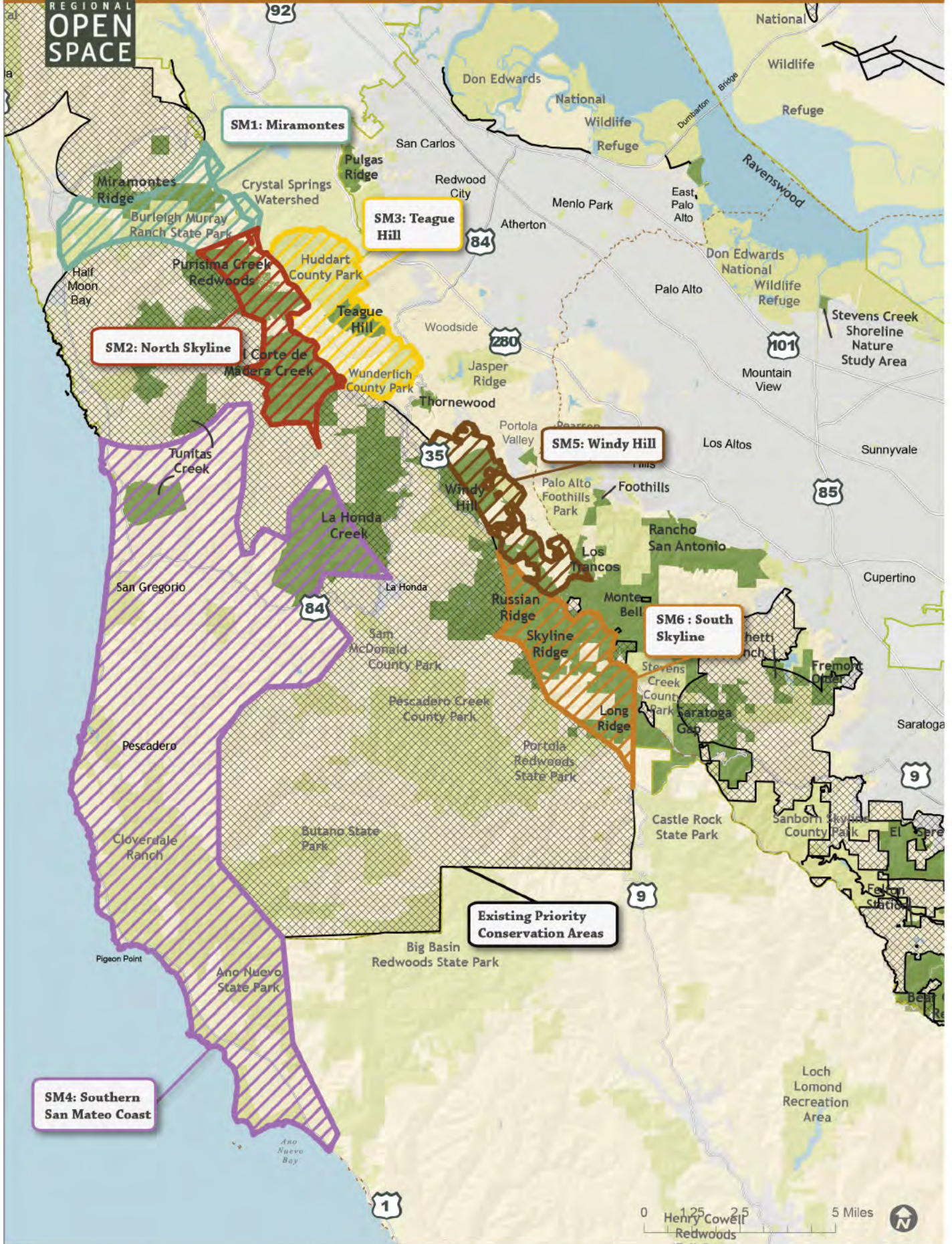
\_\_\_\_\_  
Interim District Clerk





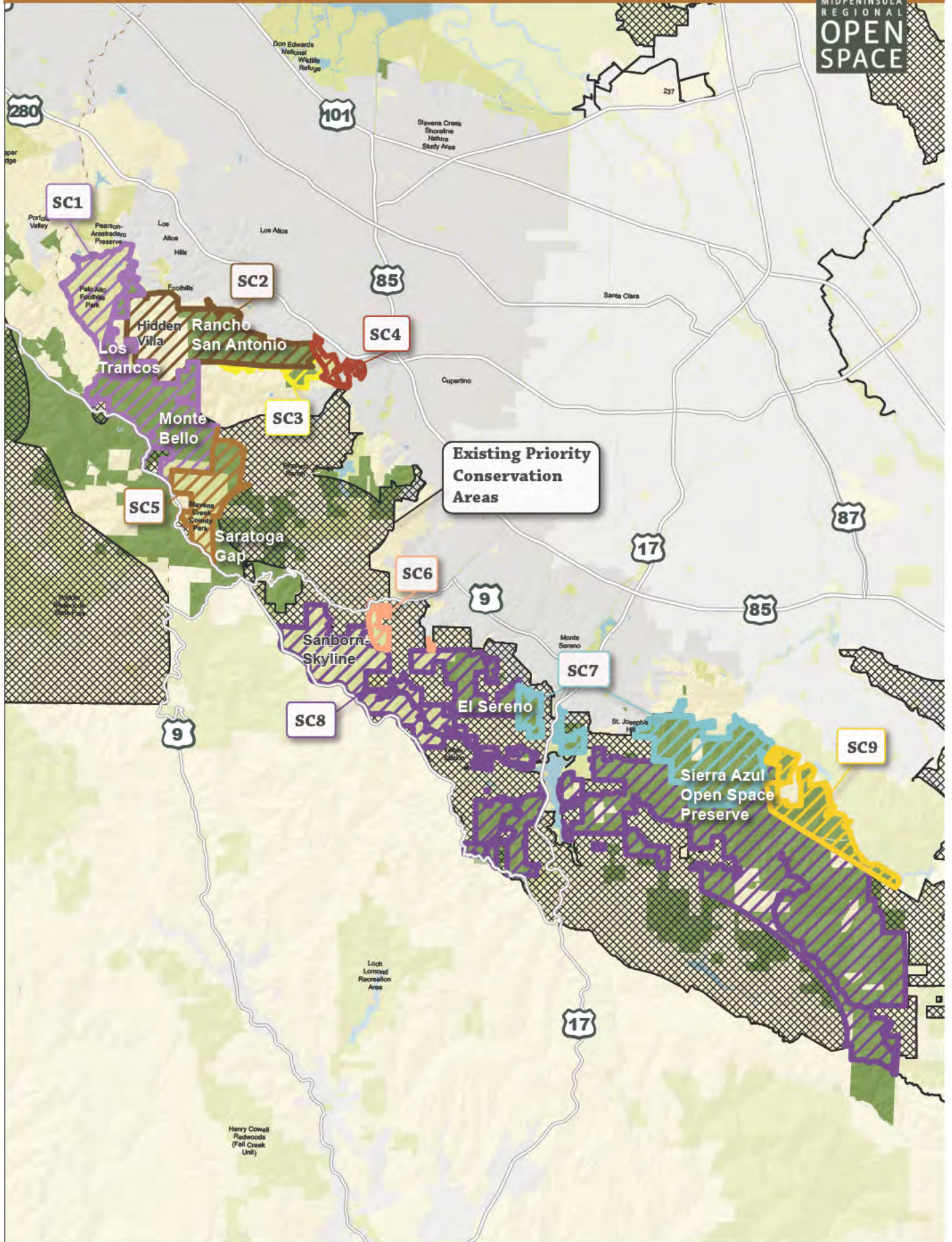


# Proposed Priority Conservation Areas San Mateo County Exhibit A





# Midpen Proposed Priority Conservation Areas, Santa Clara County (Exhibit B)



**RESOLUTION NO. 15-\_\_\_\_\_**

**A RESOLUTION OF THE BOARD OF DIRECTORS OF THE MIDPENINSULA REGIONAL OPEN SPACE DISTRICT SUPPORTING THE CITY OF MENLO PARK'S NOMINATION OF MENLO PARK AND EAST PALO ALTO BAYLANDS AS A PRIORITY CONSERVATION AREA**

---

**WHEREAS**, in 2014, the Association of Bay Area Governments requested nominations from local governments and special districts for Priority Conservation Areas pursuant to the Plan Bay Area multi-agency regional planning initiative; and

**WHEREAS**, Priority Conservation Areas are areas of regional significance which contain important agricultural, natural resource, watershed, historic, scenic, cultural, recreational, and/or ecological values and ecosystem functions deserving of conservation funding; and

**WHEREAS**, the City of Menlo Park is the nominating agency for the Menlo Park and East Palo Alto Baylands (Baylands) Priority Conservation Area, which includes Ravenswood Open Space Preserve (Preserve), owned by the Midpeninsula Regional Open Space District (District); and

**WHEREAS**, the categories for this nominated Priority Conservation Area include Regional Recreation, Natural Landscapes, and Urban Greening; and

**WHEREAS**, the District supports the designation of the regionally-significant Baylands as a Priority Conservation Area, which would make it eligible for crucial funding; and

**WHEREAS**, the District's support of the City of Menlo Park's Priority Conservation Area nomination does not commit the District to long-term management and maintenance of areas outside District lands; and

**NOW, THEREFORE**, be it resolved that the District hereby supports the designation of the Menlo Park and East Palo Alto Baylands as a Priority Conservation Area.

\*\*\*\*\*

**PASSED AND ADOPTED** by the Board of Directors of the Midpeninsula Regional Open Space District on the 13<sup>th</sup> of May 2015, at a Regular Meeting thereof, by the following vote:

**AYES:**

**NOES:**

**ABSTAIN:**

**ABSENT:**

**ATTEST:**

**APPROVED:**

---

Secretary  
Board of Directors

---

Pete Siemens, President  
Board of Directors

**APPROVED AS TO FORM:**

---

General Counsel

I, the Interim District Clerk of the Midpeninsula Regional Open Space District, hereby certify that the above is a true and correct copy of a resolution duly adopted by the Board of Directors of the Midpeninsula Regional Open Space District by the above vote at a meeting thereof duly held and called on the above day.

---

Interim District Clerk

**RESOLUTION NO. 15-\_\_\_**

**A RESOLUTION OF THE BOARD OF DIRECTORS OF THE MIDPENINSULA REGIONAL OPEN SPACE DISTRICT SUPPORTING THE CALIFORNIA COASTAL TRAIL AS A PRIORITY CONSERVATION AREA**

---

**WHEREAS**, in 2014, the Association of Bay Area Governments requested nominations from local governments and special districts for Priority Conservation Areas pursuant to the Plan Bay Area multi-agency regional planning initiative; and

**WHEREAS**, Priority Conservation Areas are areas of regional significance which contain important agricultural, natural resource, watershed, historic, scenic, cultural, recreational, and/or ecological values and ecosystem functions deserving of conservation funding; and

**WHEREAS**, the California Coastal Trail is a network of public recreation trails for walkers, bicyclists, equestrians, wheelchair riders and others along the 1,200-mile California coastline; and

**WHEREAS**, the County of San Mateo hosts a portion of the California Coastal Trail alignment within its boundaries, providing opportunities for solitude and passive and active recreation, including promoting fitness through healthy exercise; and

**WHEREAS**, the County of San Mateo, Parks and Recreation Department, supports the designation of the regionally-significant California Coastal Trail as a Priority Conservation Area, which would make it eligible for crucial funding; and

**WHEREAS**, the Midpeninsula Regional Open Space District (District) also supports the designation of the regionally-significant California Coastal Trail as a Priority Conservation Area, which would make it eligible for crucial funding; and

**WHEREAS**, the District’s support of the Coastal Trail, nominated by the California State Coastal Conservancy, does not commit the District to long-term management and/or maintenance of the statewide trail; and

**NOW, THEREFORE**, be it resolved that the District hereby supports the designation of the California Coastal Trail as a Priority Conservation Area.

\*\*\*\*\*

**PASSED AND ADOPTED** by the Board of Directors of the Midpeninsula Regional Open Space District on the 13<sup>th</sup> of May 2015, at a Regular Meeting thereof, by the following vote:

**AYES:**

**NOES:**

**ABSTAIN:**

**ABSENT:**



**ATTEST:**

**APPROVED:**

---

Secretary  
Board of Directors

---

Pete Siemens, President  
Board of Directors

**APPROVED AS TO FORM:**

---

General Counsel

I, the Interim District Clerk of the Midpeninsula Regional Open Space District, hereby certify that the above is a true and correct copy of a resolution duly adopted by the Board of Directors of the Midpeninsula Regional Open Space District by the above vote at a meeting thereof duly held and called on the above day.

---

Interim District Clerk

**RESOLUTION NO. 15-\_\_\_\_\_**

**A RESOLUTION OF THE BOARD OF DIRECTORS OF THE MIDPENINSULA REGIONAL OPEN SPACE DISTRICT SUPPORTING THE SAN FRANCISCO BAY AREA WATER TRAIL AS A PRIORITY CONSERVATION AREA**

---

**WHEREAS**, in 2014, the Association of Bay Area Governments requested nominations from local governments and special districts for Priority Conservation Areas pursuant to the Plan Bay Area multi-agency regional planning initiative; and

**WHEREAS**, Priority Conservation Areas are areas of regional significance which contain important agricultural, natural resource, watershed, historic, scenic, cultural, recreational, and/or ecological values and ecosystem functions deserving of conservation funding; and

**WHEREAS**, the California State Legislature enacted the Water Trail Act (AB 1296) in 2005 establishing the San Francisco Bay Area Water Trail (Water Trail), a growing network of launching and landing sites that allows non-motorized small boat users to better enjoy the historic, scenic, cultural, and environmental richness of San Francisco Bay; and

**WHEREAS**, the Water Trail benefits the region by improving and increasing recreational access for non-motorized small boat use by persons of all abilities, fosters stewardship of the Bay and reduces impacts to sensitive wildlife and habitat through education of boaters, and provides economic benefits to waterfront and water-oriented businesses by promoting opportunities for single and multi-day excursions on the Bay; and

**WHEREAS**, the Midpeninsula Regional Open Space District (District) supports the designation of the regionally-significant Water Trail as a Priority Conservation Area, which would make it eligible for crucial funding; and

**WHEREAS**, the District's support of the Water Trail, nominated by the California State Coastal Conservancy, does not commit the District to long-term management and/or maintenance of the regional trail; and

**NOW, THEREFORE**, be it resolved that the District hereby supports the designation of the San Francisco Bay Area Water Trail as a Priority Conservation Area.

\*\*\*\*\*

**PASSED AND ADOPTED** by the Board of Directors of the Midpeninsula Regional Open Space District on the 13<sup>th</sup> of May 2015, at a Regular Meeting thereof, by the following vote:

**AYES:**

**NOES:**

**ABSTAIN:**

**ABSENT:**

**ATTEST:**

**APPROVED:**

---

Secretary  
Board of Directors

---

Pete Siemens, President  
Board of Directors

**APPROVED AS TO FORM:**

---

General Counsel

I, the Interim District Clerk of the Midpeninsula Regional Open Space District, hereby certify that the above is a true and correct copy of a resolution duly adopted by the Board of Directors of the Midpeninsula Regional Open Space District by the above vote at a meeting thereof duly held and called on the above day.

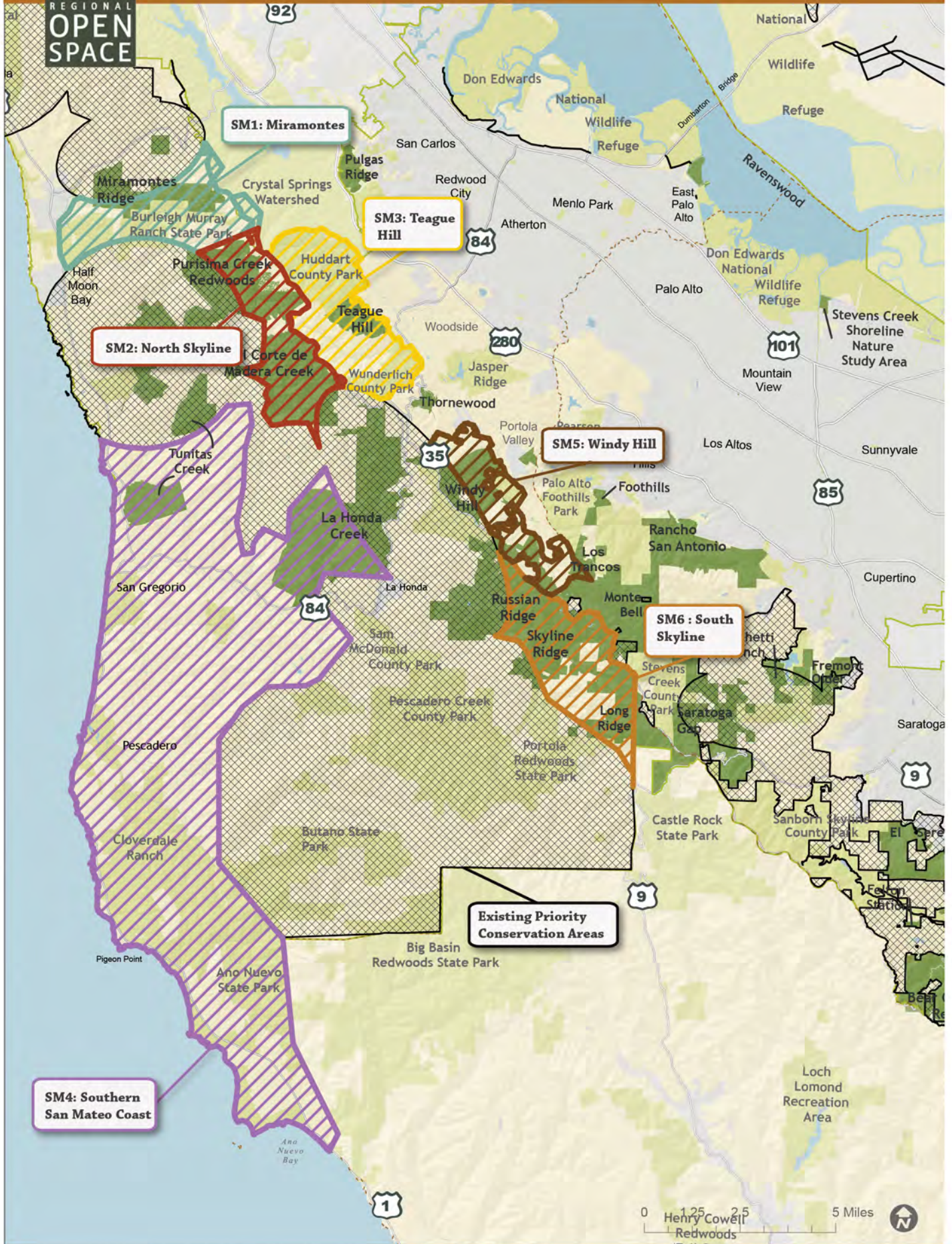
---

Interim District Clerk



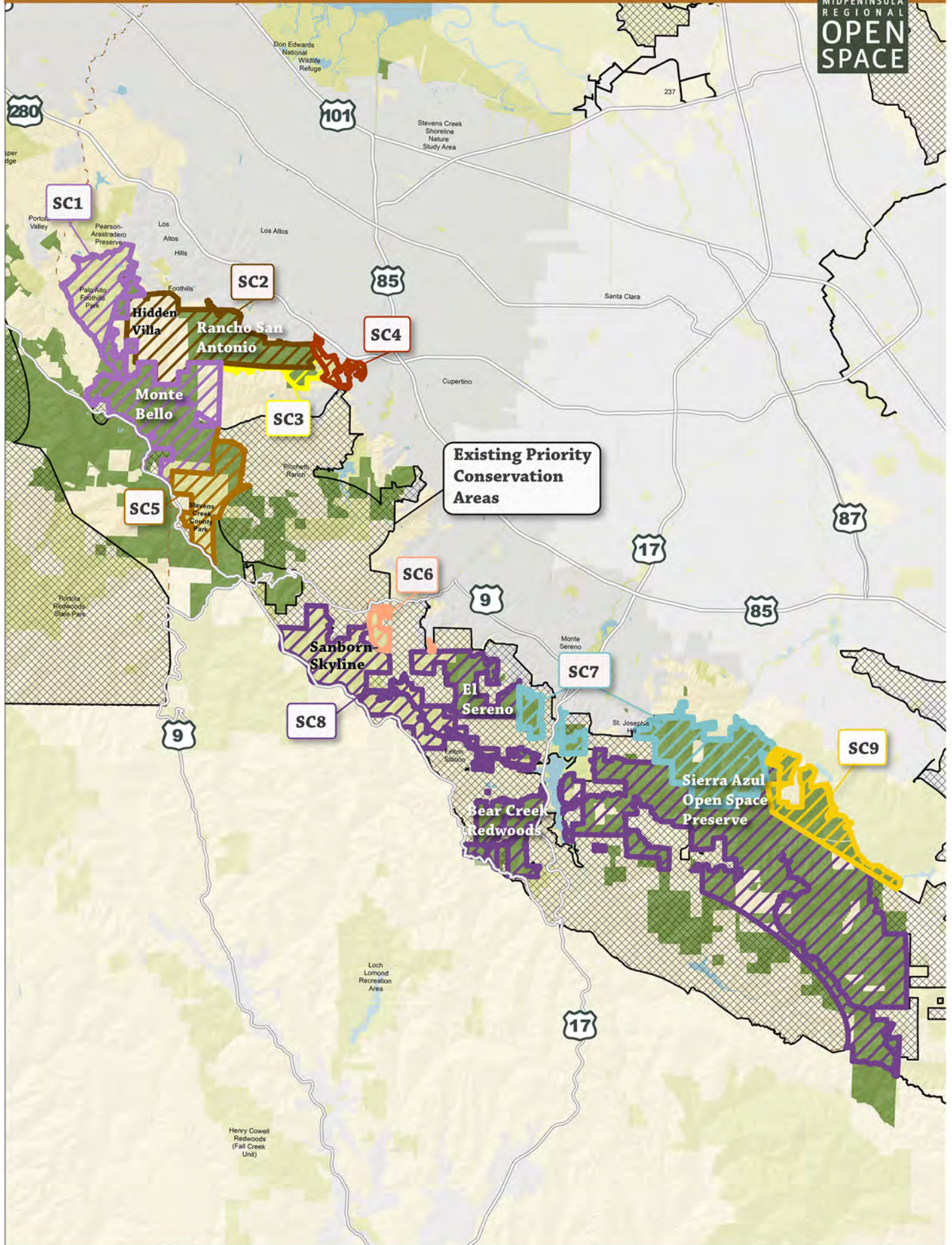


# Proposed Priority Conservation Areas San Mateo County (Attachment 5)





# Midpen Proposed Priority Conservation Areas, Santa Clara County (Attachment 6)







# Existing PCAs 2007-2008

(Attachment 7)

- 2007-2008 Existing PCAs
- MROSD Preserves
- Other Protected Open Space or Park Lands & Public Watershed Lands
- Land Trusts, Private Watersheds & Conservation Plans
- Other Public Agency & Institutional Lands
- Non-MROSD Conservation or Agricultural Easement
- MROSD Conservation Easement
- Management Agreement
- Private Property
- Developed Land
- MROSD Boundary
- MROSD Sphere of Influence
- County Boundary

0 0.75 1.5 3 Miles

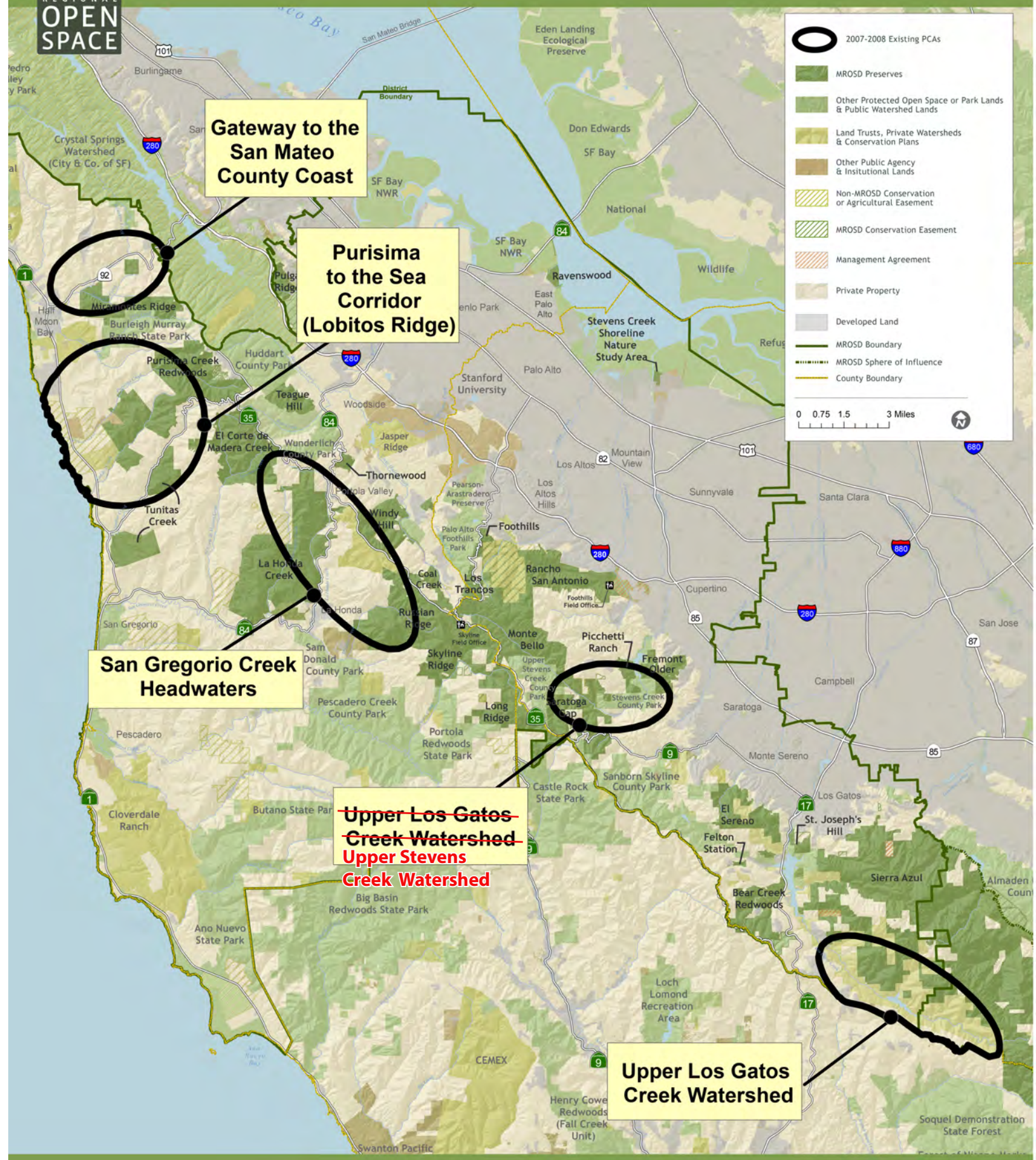
**Gateway to the San Mateo County Coast**

**Purisima to the Sea Corridor (Lobitos Ridge)**

**San Gregorio Creek Headwaters**

~~Upper Los Gatos Creek Watershed~~  
~~Upper Stevens Creek Watershed~~

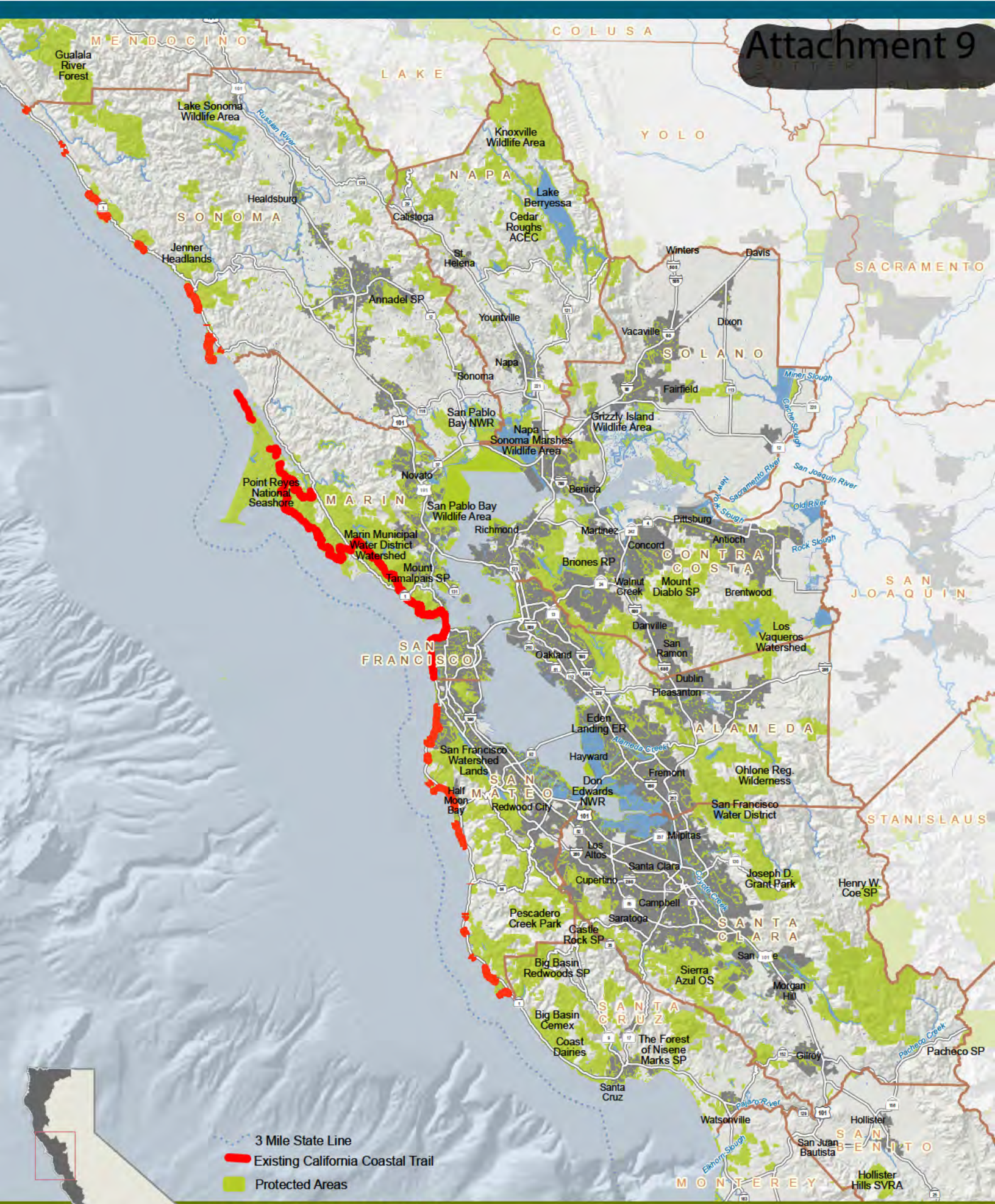
**Upper Los Gatos Creek Watershed**











BAY AREA REGION

# California Coastal Trail





