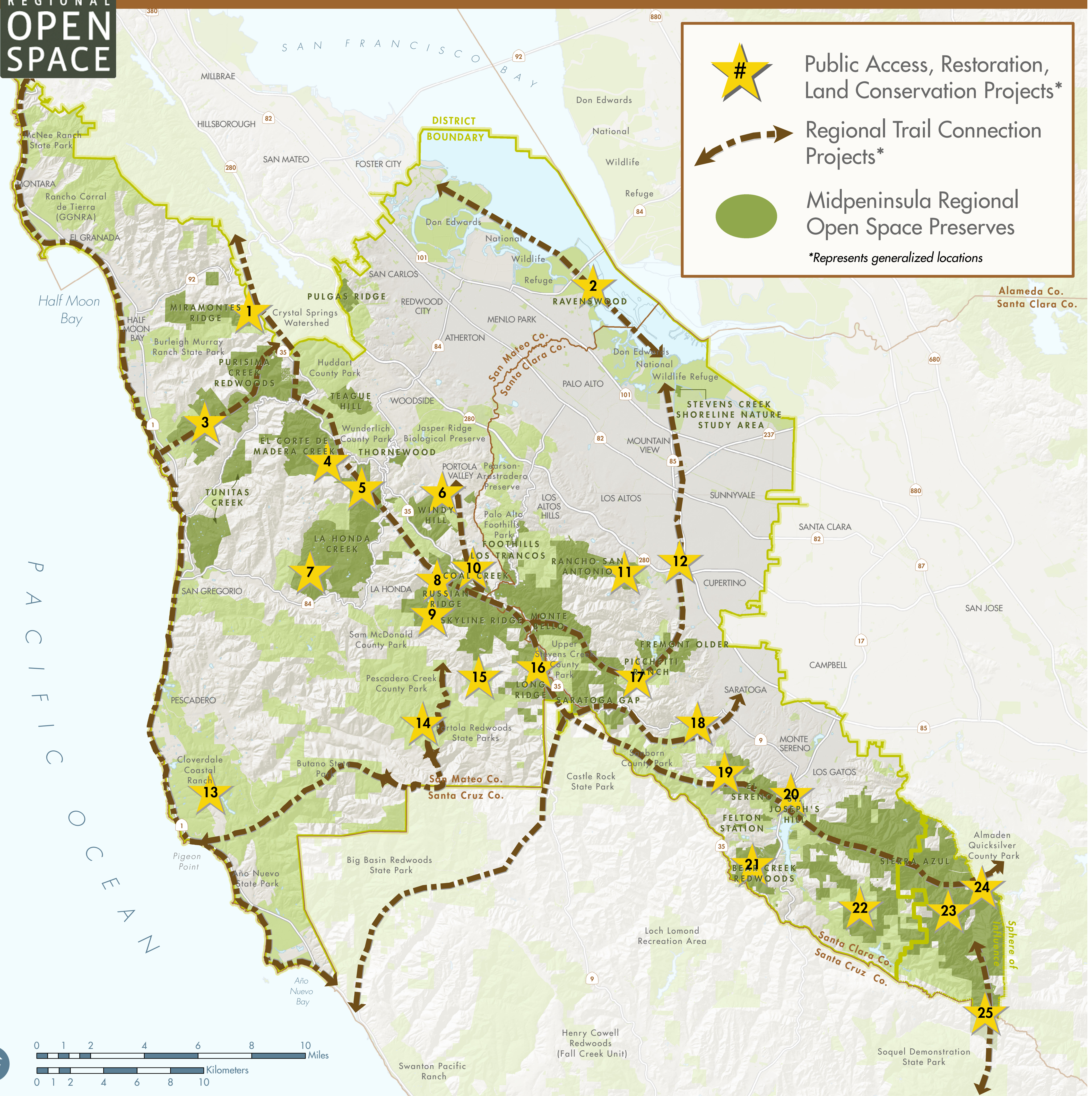




Measure AA Portfolios



- 1 **Open Miramontes Ridge to the public.** Create new trails and neighborhood access points. Restore streams in Madonna Creek watershed upstream of Half Moon Bay and enhance local farms.
- 2 **Build New Bayfront Trails and City-to-Bay trails.** Support wetland restoration and science education exhibits.
- 3 **Complete the Purisima-to-the-Sea Trail** and connect Ridge Trail to Coastal Trail. Protect and restore the Lobitos Creek watershed.
- 4 **Build Walking, Hiking and Biking Trails at El Corte de Madera.** Complete gaps in Ridge Trail. Improve water quality via land preservation and restoration.
- 5 **Open Upper La Honda Creek Preserve** for public recreation. Restore habitat and reintroduce grazing.
- 6 **Develop New Trails at Windy Hill** and improve existing ones. Open Hawthorn historic area, connecting it to Palo Alto trails. Restore Los Trancos Creek.
- 7 **Open Driscoll Ranch Area at La Honda Creek** to more public access. Restore La Honda Creek and remove fish barriers.
- 8 **Preserve Upper San Gregorio Creek Watershed** and protect streams. Create new public use facilities and complete Ridge Trail gaps at La Honda Creek and Russian Ridge.
- 9 **Open New Trails at Russian Ridge.** Introduce grazing, enhance wildlife protection.
- 10 **Re-open Alpine Road at Coal Creek** for trail use.
- 11 **Build Welcome Center at Rancho San Antonio,** refurbish Deer Hollow Farm, add education exhibits and improve transit access.
- 12 **Complete Middle Stevens Creek Trail** by supporting city and neighborhood solutions.
- 13 **Expand Grazing at Cloverdale Coastal Ranch,** develop new trail connections and restore wildlife habitat.

- 14 **Open New Trails throughout the Redwoods** connecting large parks like Big Basin Redwoods State Park.
- 15 **Protect More Redwood Forests;** salmon fishery conservation.
- 16 **Create New Public Access Facilities at Long Ridge** and protect creeks and streams.
- 17 **Complete Upper Stevens Creek Trail** and connect Ridge Trail to Bay Trail.
- 18 **Complete Saratoga-to-Sea Trail** and protect wildlife corridors.
- 19 **Open El Sereno Trails** and develop new trails to connect Skyline, Sanborn County Park, and Lexington Reservoir.
- 20 **Preserve Safe Wildlife Corridors Across Hwy. 17** and add new Bay Area Ridge Trail crossing.
- 21 **Open Bear Creek Redwoods** for public recreation and restore habitat.
- 22 **Open Cathedral Oaks at Sierra Azul** for public access. Preserve open space in the Los Gatos Creek watershed.
- 23 **Open Mt. Umunhum** for public access, including access for seniors and the disabled. Preserve wildlife corridors.
- 24 **Open Rancho de Guadalupe at Sierra Azul** for public access and develop family recreation and educational exhibits.
- 25 **Open the Loma Prieta Area at Sierra Azul** for public access, add new regional trails and protect habitat.

IMAGINE *the* Future of Open Space