



Midpeninsula Regional
Open Space District

R-24-44
Meeting 24-09
April 10, 2024

AGENDA ITEM 4

AGENDA ITEM

Award of Contract with Questa Engineering Corporation for Engineering and Design Services for the Guadalupe Creek Crossing Replacement Project in Sierra Azul Open Space Preserve

GENERAL MANAGER'S RECOMMENDATIONS *dem*

1. Authorize the General Manager to enter into a multi-year professional services contract with Questa Engineering Corporation to complete the design, engineering, and local agency permitting for the Guadalupe Creek Crossing Replacement Project for a base contract amount not-to-exceed \$149,880.
2. Authorize a 10% contingency of \$14,988 to be reserved for unanticipated issues, bringing the total not-to-exceed contract amount to \$164,868.

SUMMARY

The Midpeninsula Regional Open Space District (District) requires assistance from a qualified engineering team to complete engineering and design documents for the Guadalupe Creek Crossing Replacement Project (Project) in the Mount Umunhum Area of Sierra Azul Open Space Preserve. A Request for Qualifications and Proposal (RFQP) was issued on February 8, 2024. The General Manager recommends awarding the contract to Questa Engineering Corporation (Questa) for a base not-to-exceed contract amount of \$149,880 and authorizing a 10% contingency of \$14,988 for a total not-to-exceed contract amount of \$164,868. There is sufficient funding in the adopted Fiscal Year 2023-24 (FY24) budget to cover the recommended action and expenditures through the end of the fiscal year. Funding for future year budgets will be requested as part of the annual Budget and Action Plan process.

DISCUSSION

The Guadalupe Creek Culvert is located along the Woods Trail, an unpaved public trail and patrol road within a heavily wooded rural area in the Mt Umunhum Area of Sierra Azul Open Space Preserve. The existing Guadalupe Creek Crossing consists of one 48-inch diameter corrugated metal pipe culvert. Along the upstream side of the culvert there is a 6-foot-high concrete headwall with a failed timber log retaining wall. The road surface sits above on top of an earthen fill. Along the downstream side of the crossing there are 12-foot-high concrete headwalls and wing walls with gabion retaining wall structures supporting the road surface. The culvert pipe has significant corrosion in several locations and flow appears to be bypassing the culvert pipe by undercutting the existing structures. Staff has observed frequent blockage of the inlet during recent storms and the crossing has overtopped during storms as recent as 2023.

A qualified consulting firm is needed to provide professional engineering and design services for the removal of the existing Guadalupe Creek Culvert, evaluation and installation of a new vehicle crossing to replace the culvert, and restoration of the existing creek channel.

The District is separately soliciting proposals for an environmental consultant to provide environmental services, including, but not limited to botanical, biological and cultural surveys; preparation of riparian and wetland delineations; preparation of mitigation revegetation plans; and leading the environmental regulatory permit process.

Consultant Selection

On February 8, 2024, an RFQP was released on Periscope for the Project. Staff conducted a mandatory pre-proposal site tour on February 22, 2024 with two consulting firms in attendance. The following two proposals were received by the deadline of March 6, 2024:

| Consultant | Proposed Fee |
|--------------------------------|---------------------|
| Questa Engineering Corporation | \$149,880 |
| Sherwood Design Engineers | \$223,760 |

The District reviewed and ranked the proposals with Questa deemed as the most qualified, at a fair and reasonable price, and best suited for the project based on their response to the RFQP.

FISCAL IMPACT

The current FY24 budget includes \$116,000 for the 35031 - Guadalupe Creek Crossing Replacement project. There are sufficient funds in the project budget to cover the recommended action and expenditures.

| 35031 - Guadalupe Creek Crossing Replacement | Prior Year Actuals | FY24 Adopted | FY25 Projected | FY26 Projected | Estimated Future Years | TOTAL |
|---|---------------------------|---------------------|-----------------------|-----------------------|-------------------------------|------------------|
| Total Budget (Fund 40): | \$0 | \$116,000 | \$106,000 | \$266,000 | \$350,000 | \$838,000 |
| Spent-to-Date (as of 03/18/24): | \$0 | \$0 | \$0 | \$0 | \$0 | \$0 |
| Encumbrances: | \$0 | \$0 | \$0 | \$0 | \$0 | \$0 |
| Questa Engineering Corporation Base Contract: | \$0 | (\$50,000) | (\$99,880) | \$0 | \$0 | (\$149,880) |
| 10% Contingency: | \$0 | (\$5,000) | (\$9,988) | \$0 | \$0 | (\$14,988) |
| Budget Remaining (Proposed): | \$0 | \$61,000 | (\$3,868) | \$266,000 | \$350,000 | \$673,132 |

This recommended action is not funded by Measure AA.

PRIOR BOARD AND COMMITTEE REVIEW

None

PUBLIC NOTICE

Public notice was provided as required by the Brown Act.

CEQA COMPLIANCE

Award of a contract for design and engineering services is not a project subject to the California Environmental Quality Act (CEQA). Potential environmental effects of the Guadalupe Creek Crossing Replacement Project will be evaluated in accordance with CEQA prior to an award of contract for construction.

NEXT STEPS

Upon Board authorization, the General Manager will direct staff to enter into contract with Questa Engineering Corporation to initiate engineering and design work.

Attachments

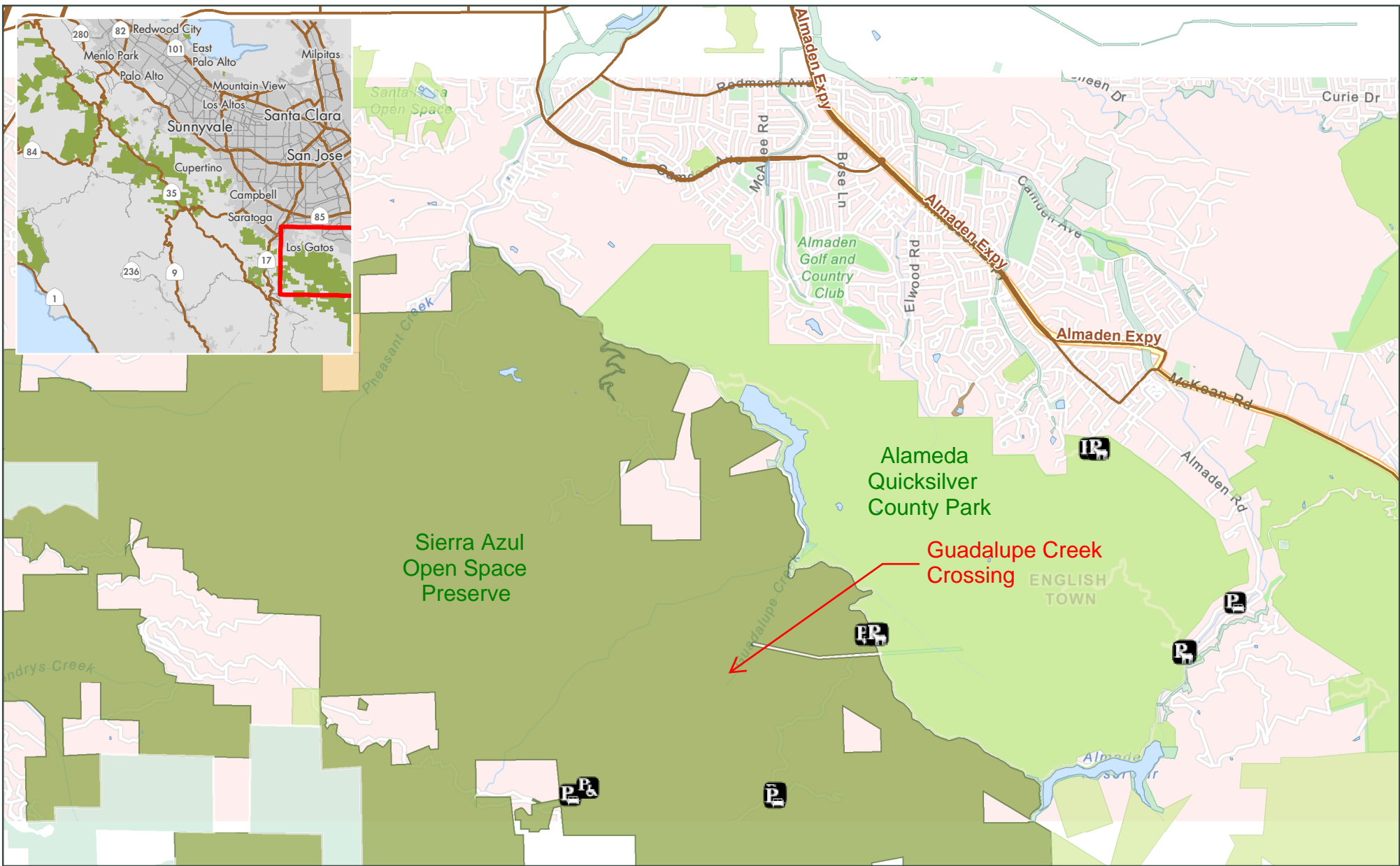
1. Area Map
2. Site Map

Responsible Department Head:

Jason Lin, P.E., Engineering and Construction Department Manager

Prepared by / Contact person / Graphics prepared by:

Paul Kvam, P.E. Senior Capital Project Manager, Engineering and Construction Department



Attachment 1 - Area Map

Parking Location Roadside

Accessible

Equestrian

Lot

Road Centerline (major)

Arterial

Freeway

Highway

Open Space

Non-MROSD Easement

Other Protected Open Space

Land Trust

Other Public Agency

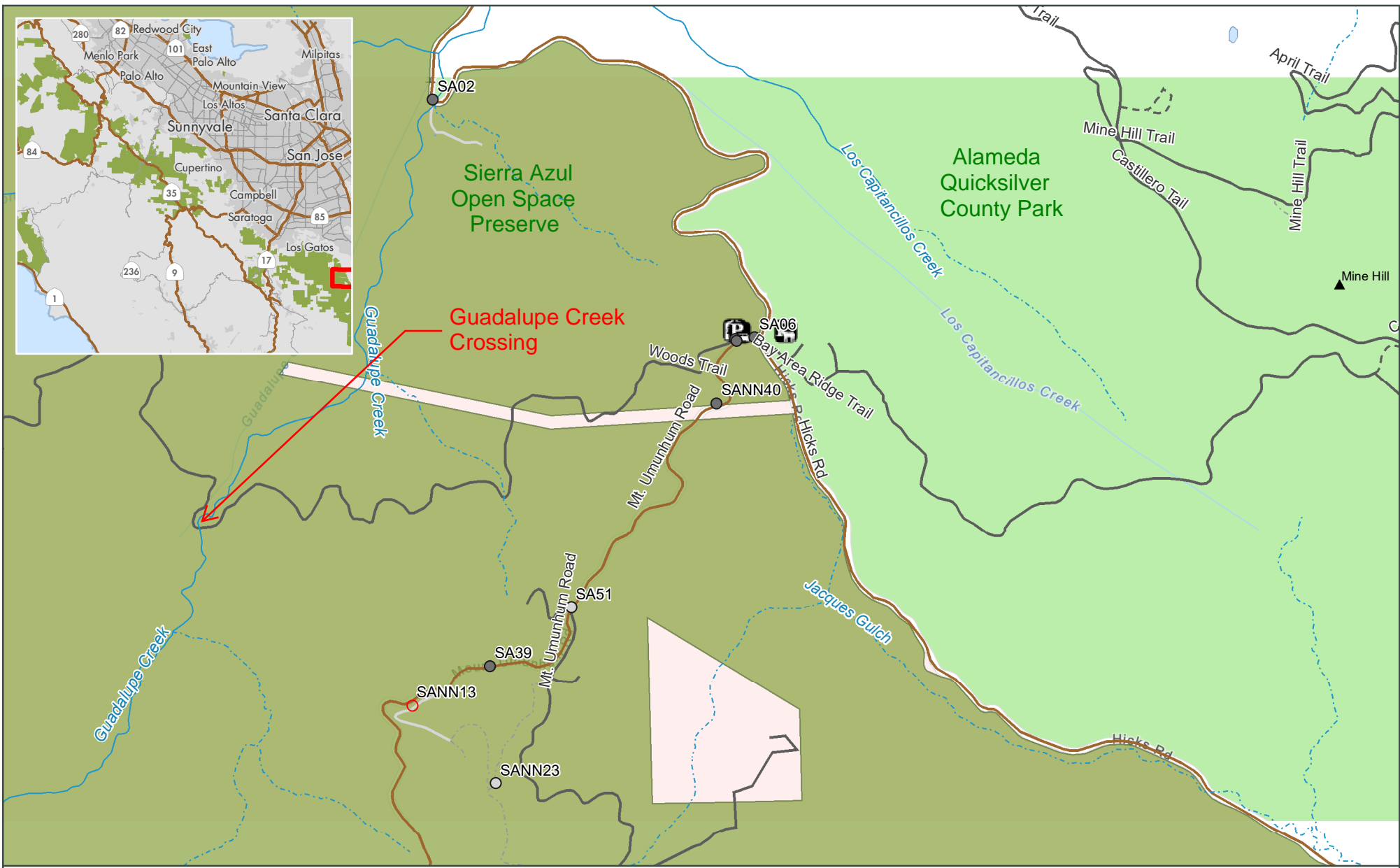
Public Watershed Land

Private Watershed Land

Preserve Boundary (fill)

Midpeninsula Regional
Open Space District
(MROSD)
1/12/2024





Attachment 2 - Site Map

| | | | |
|-------------|-------------------------|------------------------|---|
| Gate | Parking Location | Landmark | — Unpaved Seasonal Road |
| ○ Other | Equestrian | ▲ Peak | - - - Trail |
| ● Present | Lot | Trail (classes) | - · - · - Abandoned / Unmaintained Road |
| ○ Removed | Restroom | — Other | Preserve Boundary (fill) |
| | | — Paved Road | |

Midpeninsula Regional
Open Space District
(MROSD)
1/12/2024

